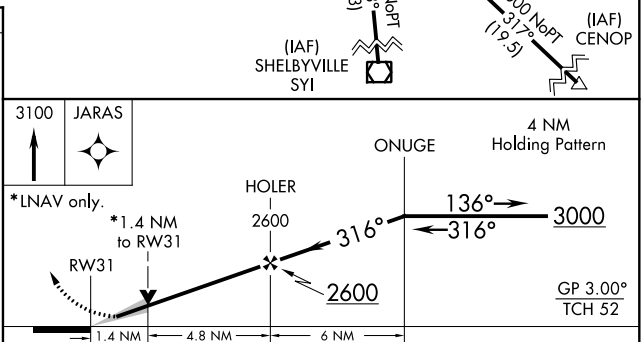
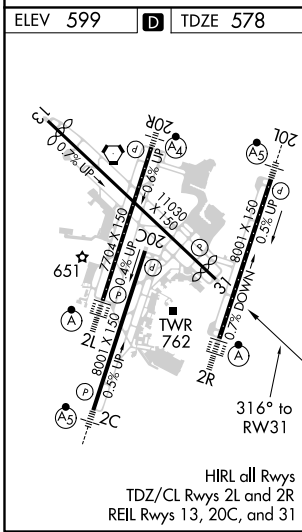
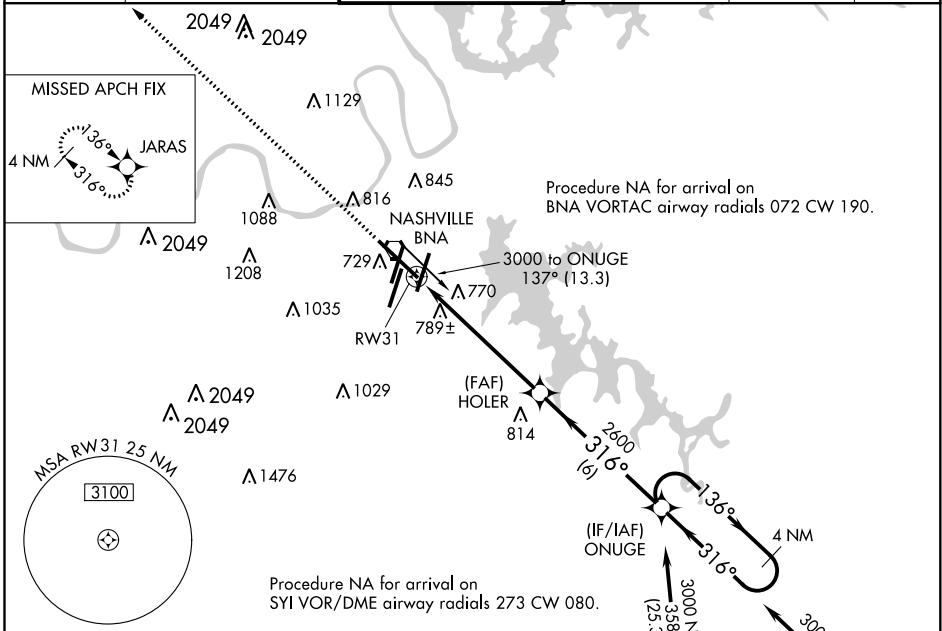


WAAS CH 65913 W31A	APP CRS 316°	Rwy Idg 9487 TDZE 578 Apt Elev 599
--	------------------------	---

RNAV (GPS) Y RWY 31

NASHVILLE INTL (BNA)

For uncompensated Baro-VNAV systems, LNAV/VNAV NA below -11°C (13°F) or above 54°C (130°F). DME/DME RNP-0.3 NA.		MISSED APPROACH: Climb to 3100 direct JARAS and hold.			
D-ATIS 135.1	NASHVILLE APP CON 118.4 360.7	NASHVILLE TOWER 118.6 257.8	GND CON 121.9 348.6	CLNC DEL 126.05	CPDLC



CATEGORY	A	B	C	D
LPV DA		778- ³ / ₄	200 (200- ³ / ₄)	
LNAV/VNAV DA		1061-1 ⁵ / ₈		483 (500-1 ⁵ / ₈)
LNAV MDA	1060-1	482 (500-1)		1060-1 ³ / ₈ 482 (500-1 ³ / ₈)
CIRCLING	1100-1 501 (600-1)	1120-1 521 (600-1)	1200-1 ³ / ₄ 601 (700-1 ³ / ₄)	1380-2 ¹ / ₂ 781 (800-2 ¹ / ₂)

SE-1, 19 MAY 2022 to 16 JUN 2022

SE-1, 19 MAY 2022 to 16 JUN 2022