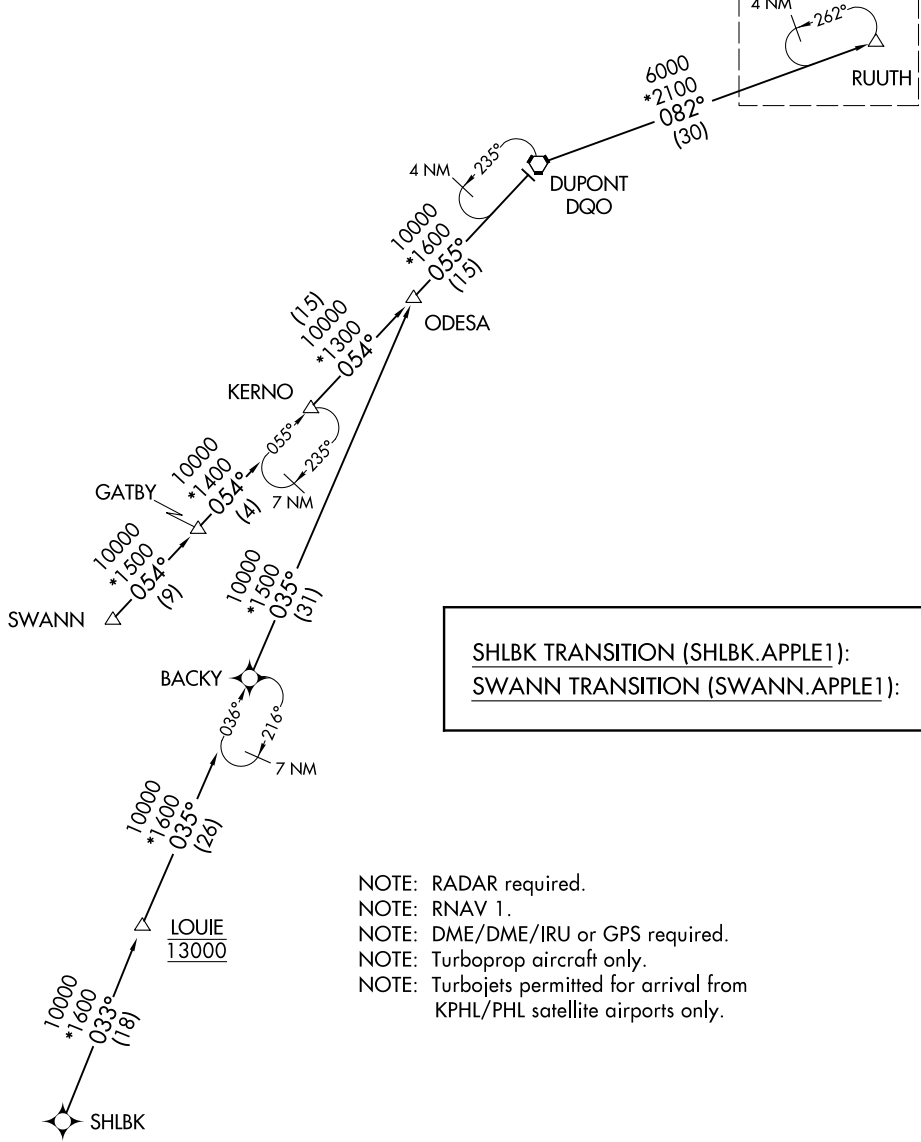


APPLE ONE ARRIVAL (RNAV) Transition Routes

PHILADELPHIA APP CON  
119.75 269.25  
POTOMAC APP CON  
124.55 317.425  
NEW YORK APP CON  
127.3 263.0  
D-ATIS ARR  
125.95

See following page  
for Arrival Route.  
4 NM  
262°  
RUUTH



SHLBK TRANSITION (SHLBK.APPLE1):  
SWANN TRANSITION (SWANN.APPLE1):

- NOTE: RADAR required.
- NOTE: RNAV 1.
- NOTE: DME/DME/IRU or GPS required.
- NOTE: Turboprop aircraft only.
- NOTE: Turbojets permitted for arrival from KPHL/PHL satellite airports only.

NOTE: Chart not to scale.

NE-2, 19 MAY 2022 to 16 JUN 2022

NE-2, 19 MAY 2022 to 16 JUN 2022