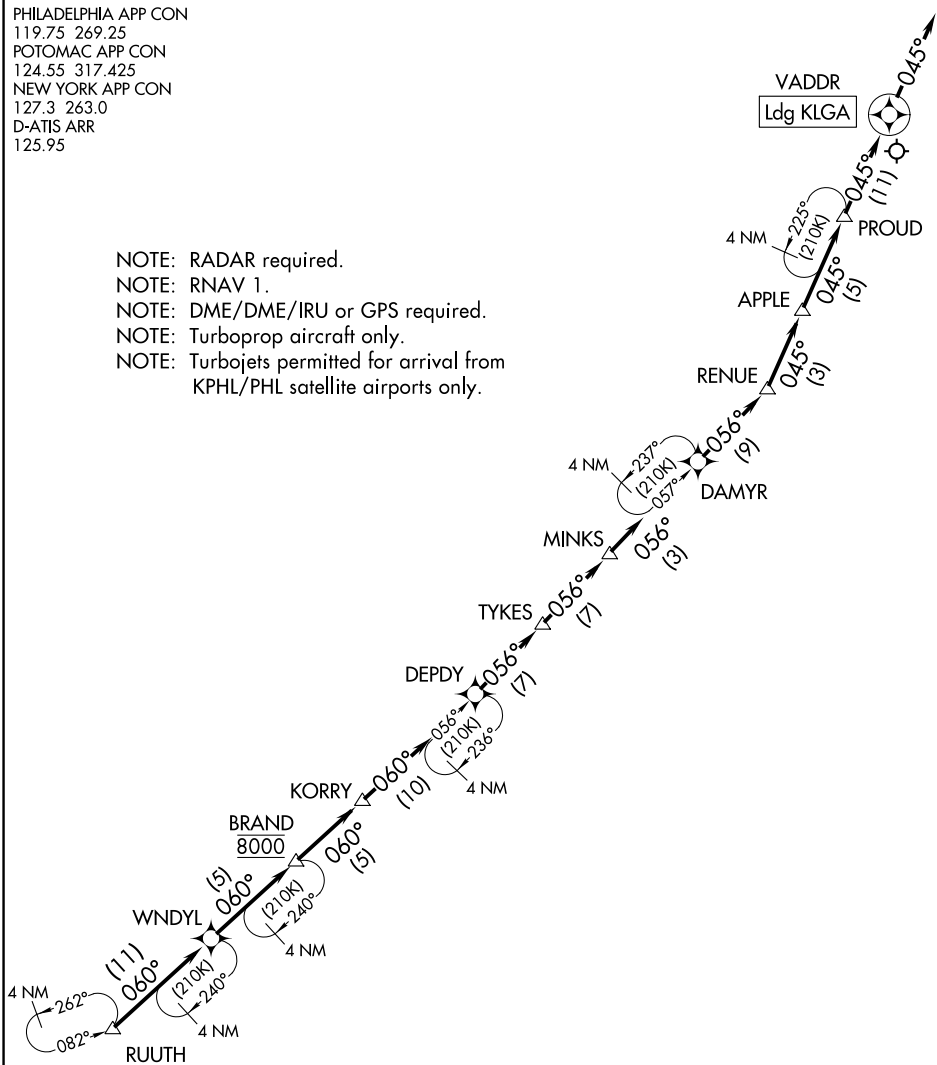


APPLE ONE ARRIVAL (RNAV) Arrival Route

PHILADELPHIA APP CON
 119.75 269.25
 POTOMAC APP CON
 124.55 317.425
 NEW YORK APP CON
 127.3 263.0
 D-ATIS ARR
 125.95

- NOTE: RADAR required.
- NOTE: RNAV 1.
- NOTE: DME/DME/IRU or GPS required.
- NOTE: Turboprop aircraft only.
- NOTE: Turbojets permitted for arrival from KPHL/PHL satellite airports only.



NOTE: Chart not to scale.

ARRIVAL ROUTE DESCRIPTION

From RUUTH on track 060° to WNDYL, then on track 060° to cross BRAND at 8000, then on track 060° to KORRY, then on track 060° to DEPDY, then on track 056° to TYKES, then on track 056° to MINKS, then on track 056° to DAMYR, then on track 056° to RENUE, then on track 045° to APPLE, then on track 045° to PROUD, then on track 045° to VADDR, then on track 045°. Expect RADAR vectors to final approach course.

APPLE ONE ARRIVAL (RNAV) Arrival Route

NE-2, 19 MAY 2022 to 16 JUN 2022

NE-2, 19 MAY 2022 to 16 JUN 2022