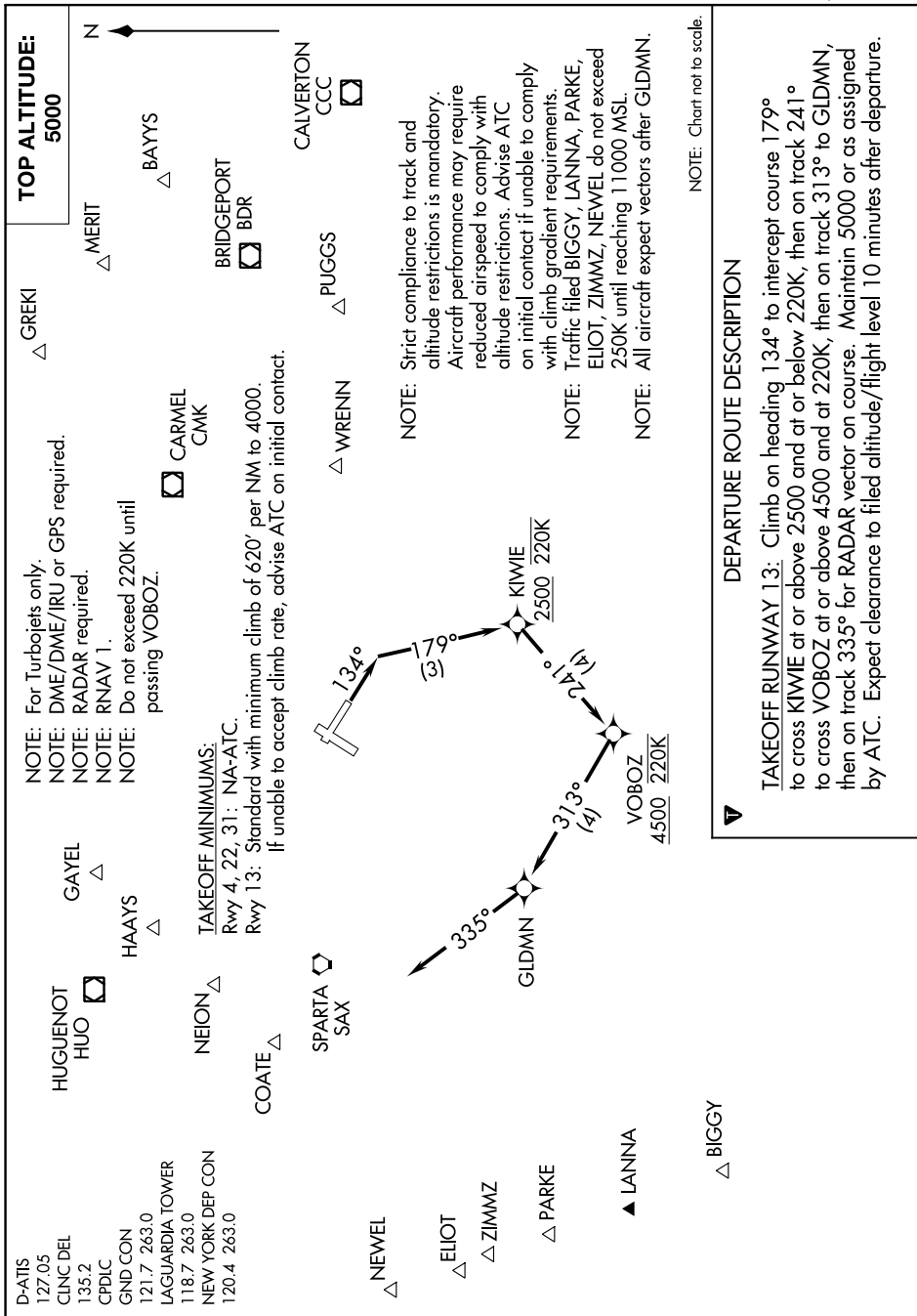


GLDMN SEVEN DEPARTURE (RNAV)

NE-2, 19 MAY 2022 to 16 JUN 2022



DEPARTURE ROUTE DESCRIPTION

TAKEOFF RUNWAY 13: Climb on heading 134° to intercept course 179° to cross KIWIE at or above 2500 and at or below 220K, then on track 241° to cross VOBOZ at or above 4500 and at 220K, then on track 313° to GLDMN, then on track 335° for RADAR vector on course. Maintain 5000 or as assigned by ATC. Expect clearance to filed altitude/flight level 10 minutes after departure.

NE-2, 19 MAY 2022 to 16 JUN 2022

GLDMN SEVEN DEPARTURE (RNAV)