

# HAARP THREE ARRIVAL

NEW YORK APP CON  
120.8 263.0  
BOSTON CENTER  
128.1 351.7  
D-ATIS ARR  
125.95

ROCKDALE  
112.6 RKA  
Chan 73  
N42°27.98'-W75°14.35'  
L-32-33, H-10-11-12

CYPER  
N42°06.54'  
W74°16.43'  
Turbojet aircraft:  
Expect to cross at lowest  
useable flight level.

HUGUENOT  
116.1 HUO  
Chan 108

VALRE  
N41°26.12'  
W73°52.90'

NOTE: Radar required.  
NOTE: DME required.  
NOTE: STAR applicable to turbojet  
and non-turbojet aircraft  
capable of operating at  
250K or greater.

LA GUARDIA  
113.1 LGA  
Chan 78  
N40°47.02'-W73°52.12'

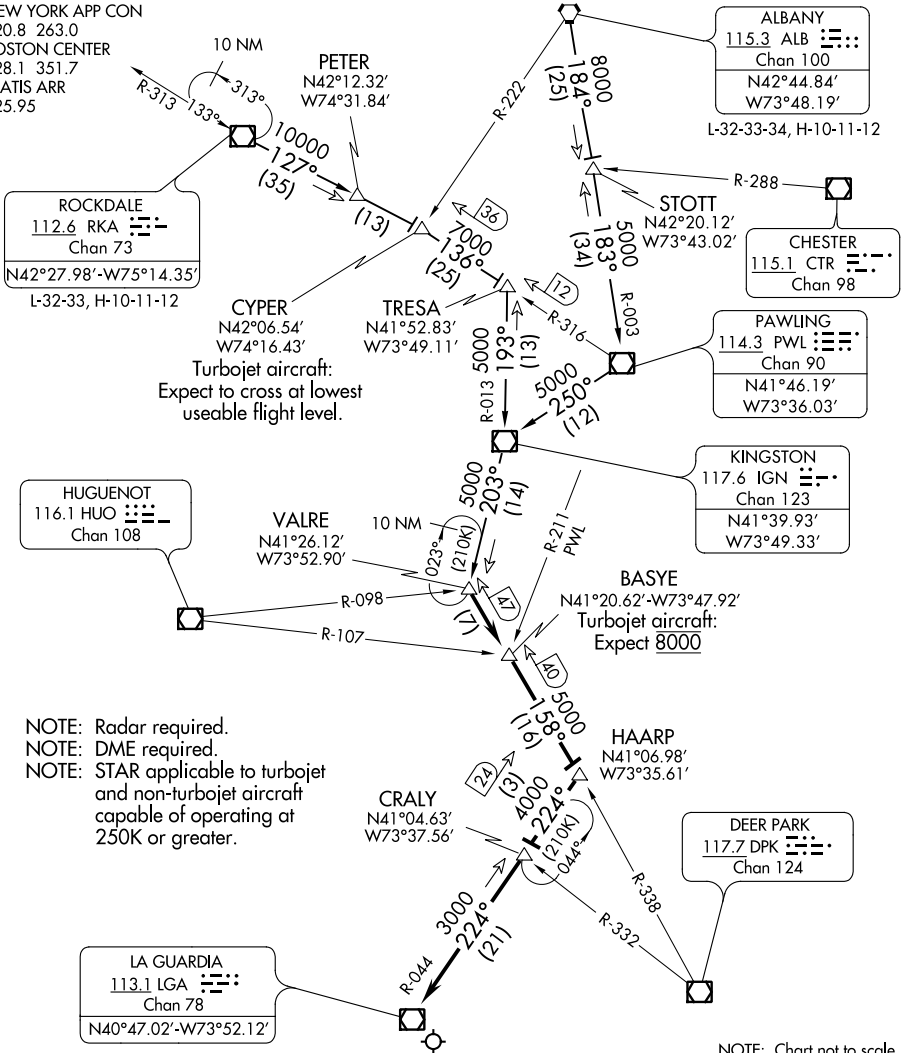
CRALY  
N41°04.63'  
W73°37.56'

BAYSE  
N41°20.62'-W73°47.92'  
Turbojet aircraft:  
Expect 8000

HAARP  
N41°06.98'  
W73°35.61'

DEER PARK  
117.7 DPK  
Chan 124

NOTE: Chart not to scale.



**ALBANY TRANSITION (ALB.HAARP3):** From over ALB VORTAC via ALB R-184 to STOTT INT, then via PWL R-003 to PWL VOR/DME, then via PWL R-250 and IGN R-070 to IGN VOR/DME, then via IGN R-203 to VALRE INT, thence. . .

**ROCKDALE TRANSITION (RKA.HAARP3):** From over RKA VOR/DME via RKA R-127 to CYPER INT, then via PWL R-316 to TRESA INT, then via IGN R-013 to IGN VOR/DME, then via IGN R-203 to VALRE INT, thence. . .

. . . From over VALRE INT via DPK R-338 to BAYSE INT, then to HAARP INT, then via LGA R-044 to CRALY, then to LGA VOR/DME. Expect radar vectors to final approach course.

# HAARP THREE ARRIVAL