

LOC/DME I-GDI 108.5 Chan 22	APP CRS 134°	Rwy Idg TDZE 12 Apt Elev 21	7003
---	------------------------	---	-------------

ILS or LOC RWY 13

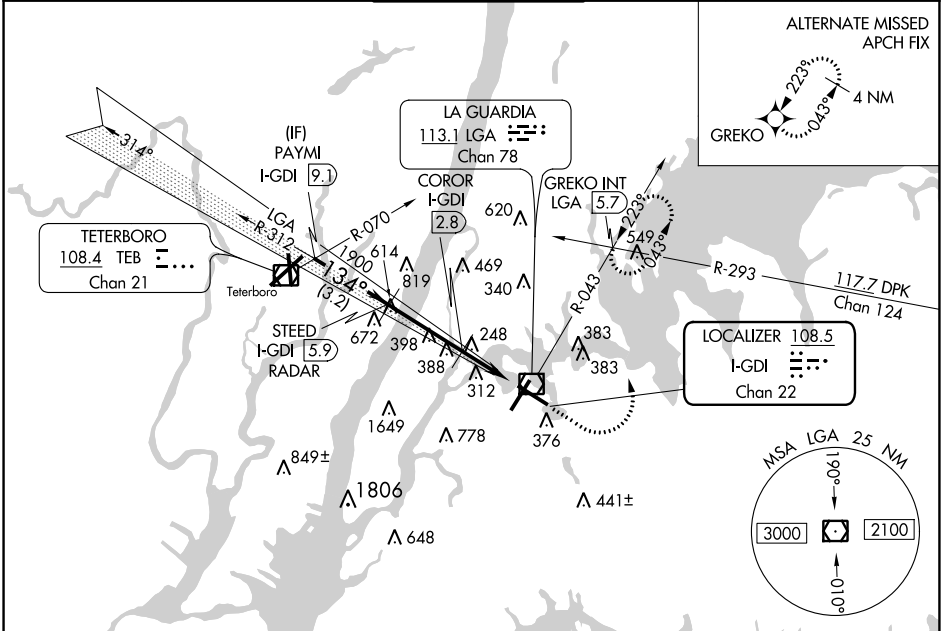
LAGUARDIA (LGA)

Radar required for procedure entry. DME or RADAR required for LOC only.

MAJRS MISSED APPROACH: Climb to 800 then climbing left turn to 2000 on LGA VOR/DME R-043 to GREKO INT/LGA 5.7 DME and hold, continue climb-in-hold to 2000.

▲ For inop ALS, increase S-LOC 13 Cats C/D visibility to 2½ SM.

D-ATIS ARR 125.95 D-ATIS DEP 127.05	NEW YORK APP CON 120.8 263.0	LAGUARDIA TOWER 118.7 263.0	GND CON 121.7 263.0	CLNC DEL 135.2	CPDLC
--	--	---------------------------------------	-------------------------------	--------------------------	-------

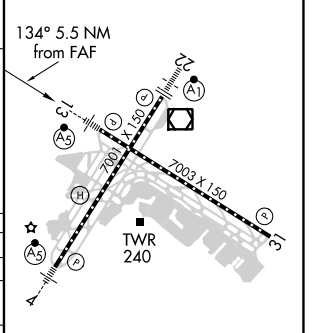
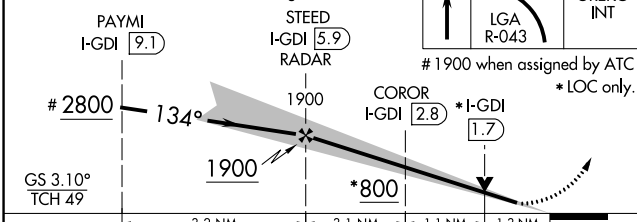


NE-2, 19 MAY 2022 to 16 JUN 2022

NE-2, 19 MAY 2022 to 16 JUN 2022

VGSI and ILS glidepath not coincident (VGSI Angle 3.10/TCH 55).

ELEV 21	TDZE 12
---------	---------



CATEGORY	A	B	C	D
S-ILS 13	212/18			
S-LOC 13	800/24 788 (800-½)	800/40 788 (800-¾)	800-1¼	788 (800-1¼)
C CIRCLING	800-1 779 (800-1)	800-1¼ 779 (800-1¼)	1080-3 1059 (1100-3)	1260-3 1239 (1300-3)
COROR FIX MINIMUMS				
S-LOC 13	500/24	488 (500-½)	500/50	488 (500-1)
C CIRCLING	700-1	679 (700-1)	1080-3 1059 (1100-3)	1260-3 1239 (1300-3)

FAF to MAP 5.5 NM					
Knots	60	90	120	150	180
Min:Sec	5:30	3:40	2:45	2:12	1:50