


LOC/DME I-LGA	APP CRS	Rwy Idg	7001
110.5	044°	TDZE	21
Chan 42		Apt Elev	21

ILS or LOC RWY 4

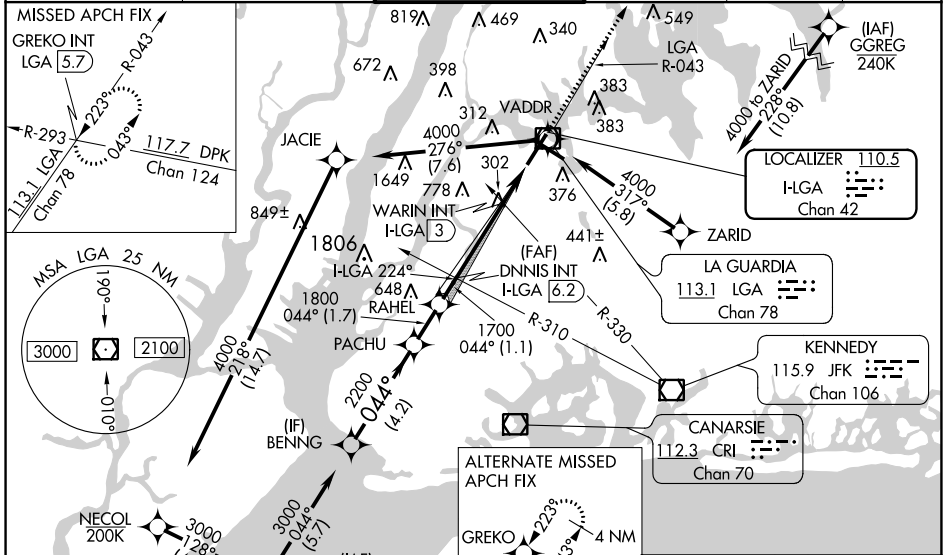
LAGUARDIA (LGA)

RNP APCH - GPS.

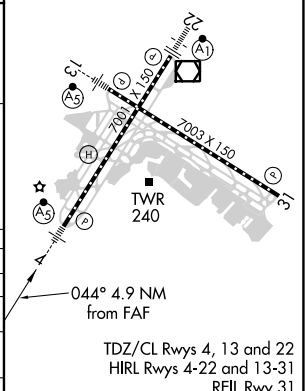
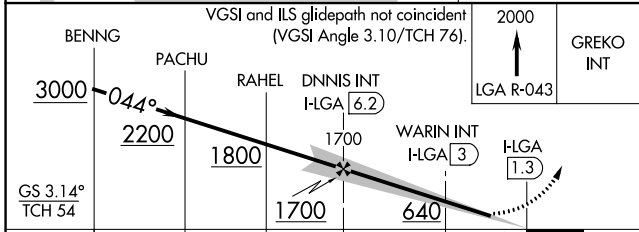
▼ Rwy 4 helicopter visibility reduction below RVR 5000 NA. Inop table does not apply to S-ILS 4 all Cats, S-LOC 4 Cats A and B and WARIN fix minimums Cats A and B.
▲ For inop ALS increase S-ILS 4 all Cats visibility to RVR 4500. Going below glidepath may not provide obstacle clearance inside DA. Crossing Rwy threshold below charted TCH may not provide required visibility area obstacle clearance. DME from LGA VOR/DME. Autopilot couple approach NA. Circling NA northwest of Rwy 4 and southwest of Rwy 13.
 * RVR 2400 authorized with FD or HUD to DA.

MALSRR  MISSED APPROACH: Climb to 2000 on LGA VOR/DME R-043 to GREKO INT/LGA 5.7 DME and hold, continue climb-in-hold to 2000.

D-ATIS ARR 125.95	NEW YORK APP CON	LAGUARDIA TOWER	GND CON	CLNC DEL	CPDLC
D-ATIS DEP 127.05	120.8 263.0	118.7 263.0	121.7 263.0	135.2	



ELEV 21	D TDZE 21
----------------	-------------------------



CATEGORY	A	B	C	D	
S-ILS 4 *	283/40 262 (300-¾)				
S-LOC 4	640/50	619 (700-1)	640-1⅜	619 (700-1⅝)	
C CIRCLING	680-1	659 (700-1)	700-2 679 (700-2)	760-2¼ 739 (800-2¼)	
WARIN FIX MINIMUMS (DUAL VOR RECEIVERS OR DME REQUIRED)					
S-LOC 4	560/50	539 (600-1)	560/55	539 (600-1)	
C CIRCLING	680-1	659 (700-1)	700-2 679 (700-2)	760-2¼ 739 (800-2¼)	
FAF to MAP 4.9 NM					
Knots	60	90	120	150	180
Min:Sec	4:54	3:16	2:27	1:58	1:38

NE-2, 19 MAY 2022 to 16 JUN 2022

NE-2, 19 MAY 2022 to 16 JUN 2022