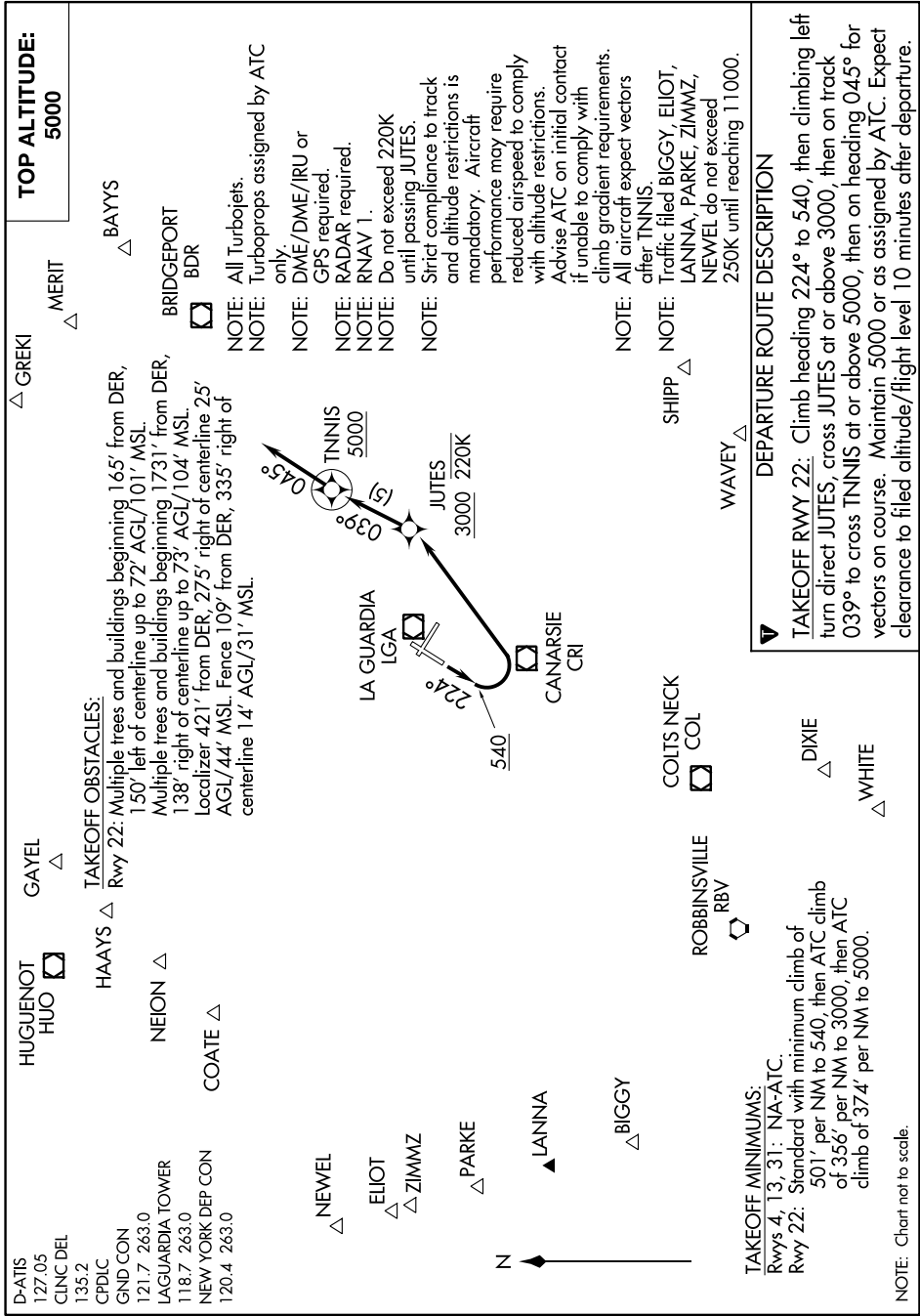


JUTES THREE DEPARTURE (RNAV)

NE-2, 19 MAY 2022 to 16 JUN 2022



NE-2, 19 MAY 2022 to 16 JUN 2022

JUTES THREE DEPARTURE (RNAV)

TOP ALTITUDE:
5000

△ GREKI
△ MERIT

△ BAYYS
BRIDGEPORT
BDR

NOTE: All Turbojets.
NOTE: Turboprops assigned by ATC only.
NOTE: DME/DME/IRU or GPS required.
NOTE: RADAR required.
NOTE: RNAV 1.
NOTE: Do not exceed 220K until passing JUTES.
NOTE: Strict compliance to track and altitude restrictions is mandatory. Aircraft performance may require reduced airspeed to comply with altitude restrictions.
NOTE: Advise ATC on initial contact if unable to comply with climb, gradient requirements, after TNNIS.

NOTE: All aircraft expect vectors after TNNIS.
NOTE: Traffic filed BIGGY, ELIOT, LANNA, PARKE, ZIMMZ, NEWEL do not exceed 250K until reaching 11000.

HUGUENOT
HUO

HAAYS △
NEION △
COATE △

△ NEWEL
△ ELIOT
△ ZIMMZ

△ PARKE

▲ LANNA

△ BIGGY

COLTS NECK
COL

ROBBINSVILLE
RBY

△ DIXIE

△ WHITE

TAKEOFF MINIMUMS:
Rwys 4, 13, 31: NA-ATC.

Rwy 22: Standard with minimum climb of 501' per NM to 540, then ATC climb of 356' per NM to 3000, then ATC climb of 374' per NM to 5000.

NOTE: Chart not to scale.