

LOC/DME I-TKD 111.15 Chan 48 (Y)	APP CRS 234°	Rwy Idg TDZE Apt Elev	N/A 21
---	------------------------	--------------------------	-------------------------

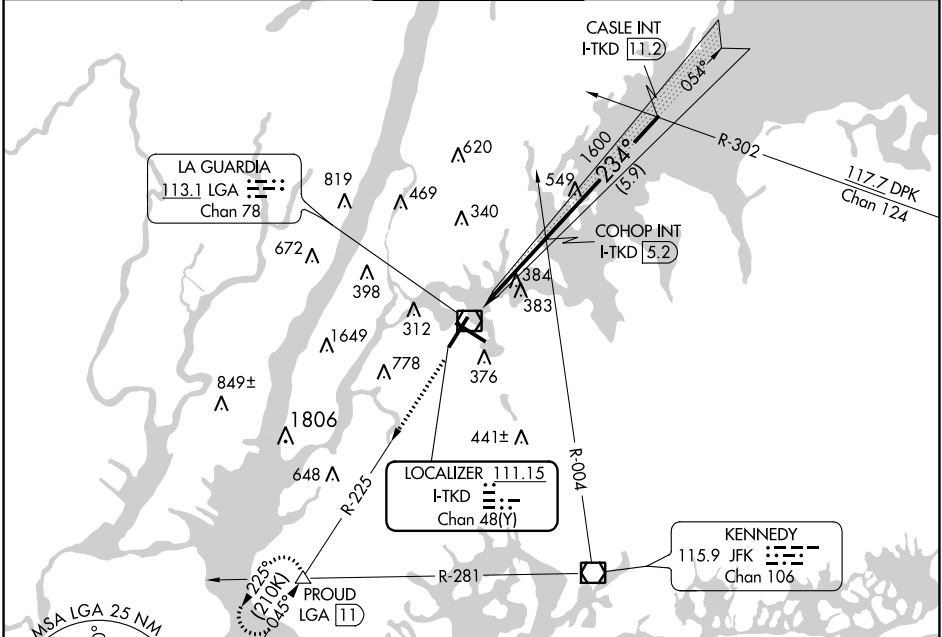
LDA-A

LAGUARDIA (LGA)

RADAR required for procedure entry.
 Auto pilot coupled approach NA.

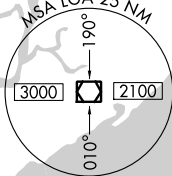
MISSED APPROACH: Climb to 3000 on LGA VOR/DME R-225 to PROUD INT and hold, continue climb-in-hold to 3000.

D-ATIS ARR 125.95 D-ATIS DEP 127.05	NEW YORK APP CON 120.8 263.0	LAGUARDIA TOWER 118.7 263.0	GND CON 121.7 263.0	CLNC DEL 135.2	CPDLC
--	--	---------------------------------------	-------------------------------	--------------------------	-------

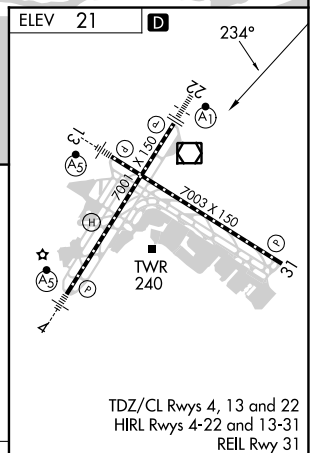
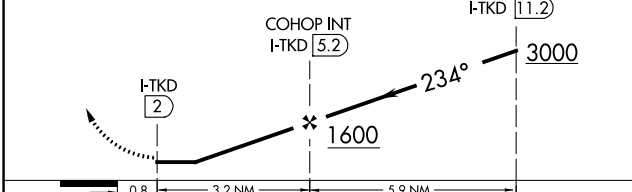


NE-2, 19 MAY 2022 to 16 JUN 2022

NE-2, 19 MAY 2022 to 16 JUN 2022



3000	LGA R-225	PROUD
------	-----------	-------



CATEGORY	A	B	C	D	FAF to MAP 3.2 NM					
CIRCLING	700-1	679 (700-1)	1080-3	1260-3	Knots	60	90	120	150	180
			1059 (1100-3)	1239 (1300-3)	Min:Sec	3:12	2:08	1:36	1:17	1:04