

MILTON FOUR ARRIVAL

NEW YORK, NEW YORK

NE-2, 19 MAY 2022 to 16 JUN 2022

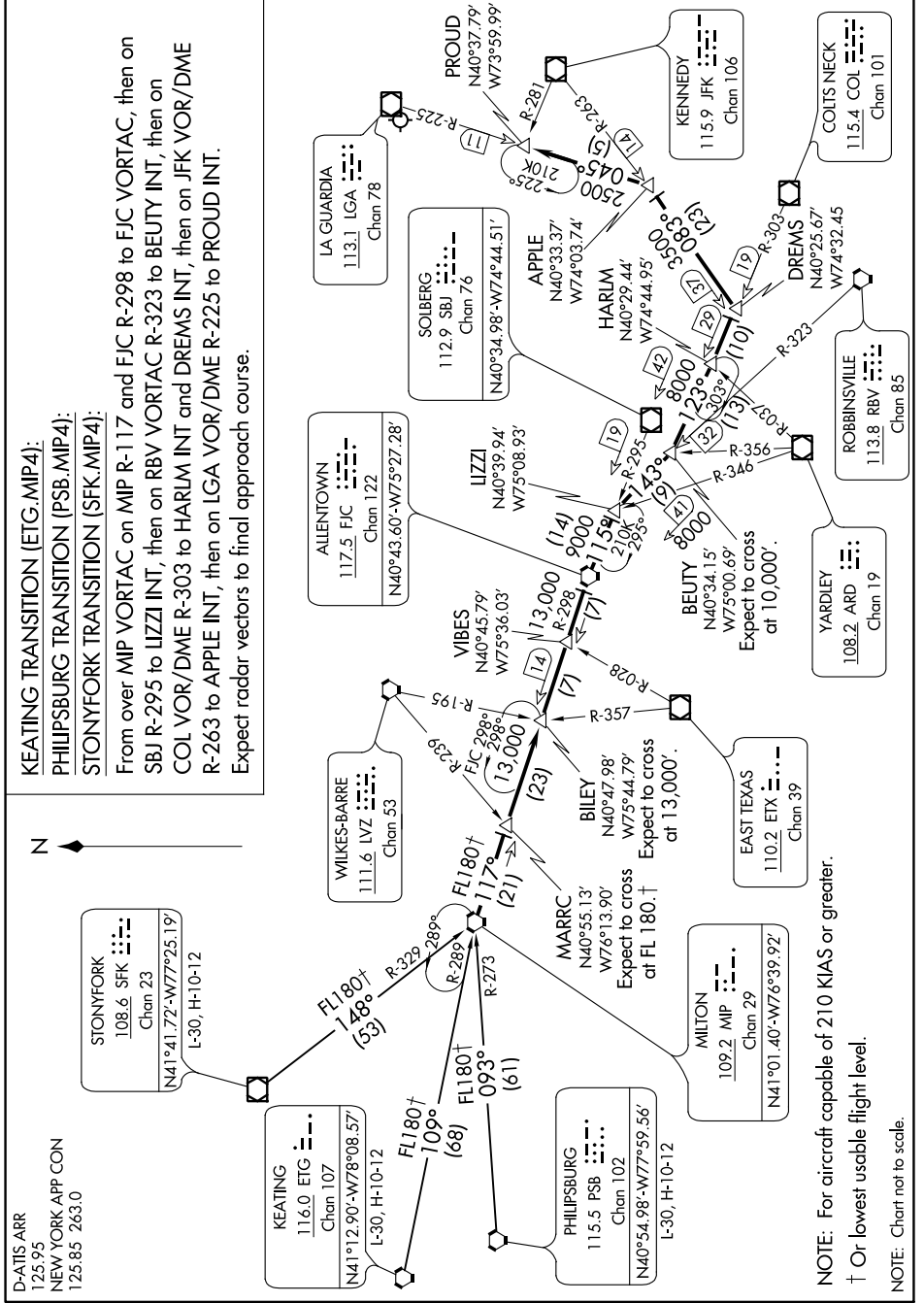
KEATING TRANSITION (ETG.MIP4):

PHILPSBURG TRANSITION (PSB.MIP4):

STONYFORK TRANSITION (SFK.MIP4):

From over MIP VORTAC on MIP R-117 and FJC R-298 to FJC VORTAC, then on SBJ R-295 to LIZZI INT, then on RBV VORTAC R-323 to BEUTY INT, then on COL VOR/DME R-303 to HARLM INT and DREMS INT, then on JFK VOR/DME R-263 to APPLE INT, then on LGA VOR/DME R-225 to PROUD INT.

Expect radar vectors to final approach course.



NOTE: For aircraft capable of 210 KIAS or greater.

† Or lowest usable flight level.

NOTE: Chart not to scale.

NE-2, 19 MAY 2022 to 16 JUN 2022

MILTON FOUR ARRIVAL