

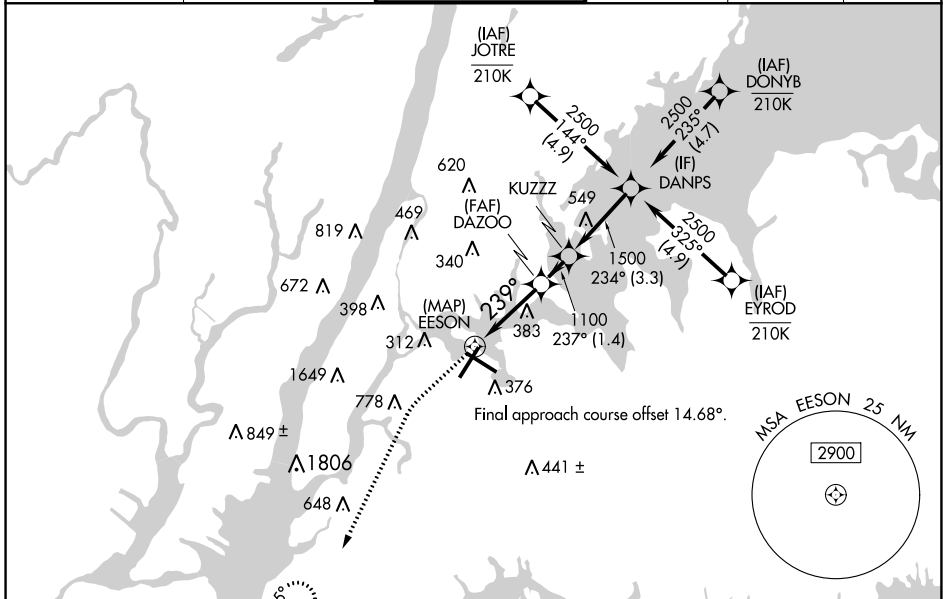
APP CRS	Rwy Idg	7001
239°	TDZE	12
	Apt Elev	21

RNAV (GPS) X RWY 22

LAGUARDIA (LGA)

RNP APCH - GPS.	ALSF-1 	MISSED APPROACH: Climb to 500 then climbing left turn to 3000 direct PROUD and hold, continue climb-in-hold to 3000.
Circling NA southwest of Rwy 13-31. For uncompensated Baro-VNAV systems, LNAV/VNAV NA below -11°C or above 54°C. For inop ALS, increase LNAV/VNAV all Cats visibility to RVR 5500; increase LNAV Cats C/D visibility to 1¼ SM.		

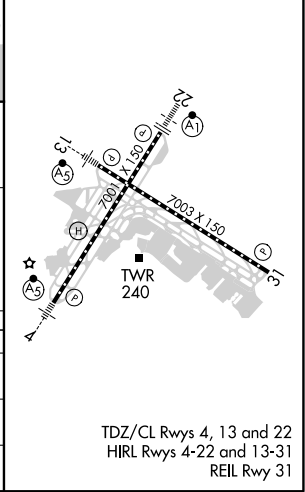
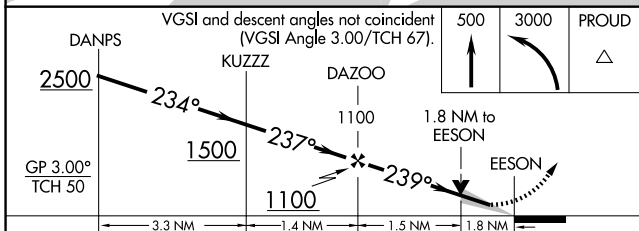
D-ATIS ARR	125.95	NEW YORK APP CON	120.8 263.0	LAGUARDIA TOWER	118.7 263.0	GND CON	121.7 263.0	CLNC DEL	135.2	CPDLC
D-ATIS DEP	127.05									



NE-2, 19 MAY 2022 to 16 JUN 2022

NE-2, 19 MAY 2022 to 16 JUN 2022

ELEV	21	D	TDZE	12
------	-----------	----------	------	-----------



CATEGORY	A	B	C	D
LNAV/VNAV DA		381/35	369 (400-%)	
LNAV MDA	640/24	628 (700-½)	640-1¾	628 (700-1¾)
C CIRCLING	640-1	619 (700-1)	700-2 679 (700-2)	760-2¼ 739 (800-2¼)

TDZ/CL Rws 4, 13 and 22
 HIRL Rws 4-22 and 13-31
 REIL Rwy 31