

# RNAV (GPS) X RWY 31

LAGUARDIA (LGA)

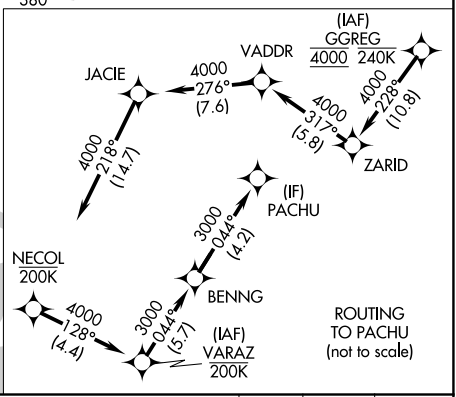
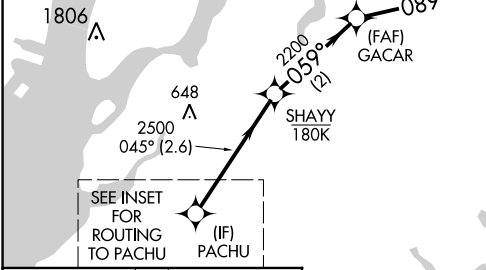
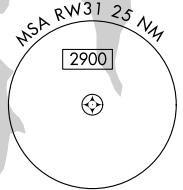
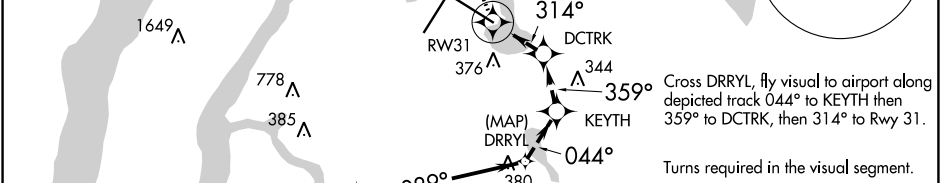
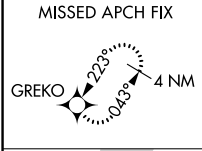
APP CRS	Rwy Idg	<b>7003</b>
<b>089°</b>	TDZE	<b>7</b>
	Apt Elev	<b>21</b>

RNP APCH-GPS. RADAR required.

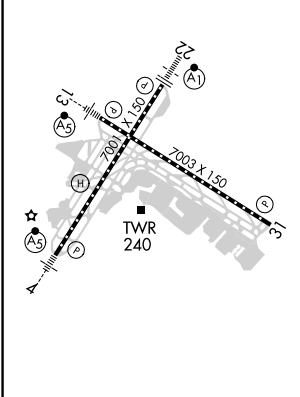
**▼**  
**▲** Rwy 31 helicopter visibility reduction below 3/4 SM.NA.

**MISSED APPROACH:** (Do not exceed 165K until Rwy 31 then do not exceed 210K until GREKO). Climb to 2000 on FMS lateral path to RW31, then climbing right turn direct GREKO and hold. If unable to follow the FMS lateral path, turn left heading 025° and climb to 2000 direct GREKO and hold.

D-ATIS ARR	<b>125.95</b>	NEW YORK APP CON	<b>120.8 263.0</b>	LAGUARDIA TOWER	<b>118.7 263.0</b>	GND CON	<b>121.7 263.0</b>	CLNC DEL	<b>135.2</b>	CPDLC
D-ATIS DEP	<b>127.05</b>									



ELEV	21	<b>D</b>	TDZE	7
------	----	----------	------	---

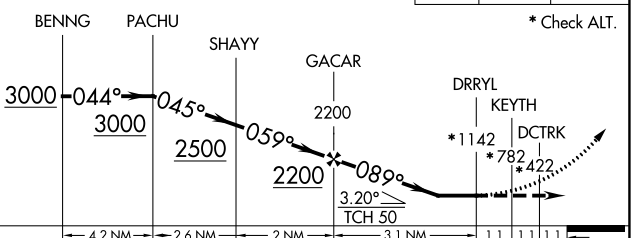


VGSI and descent angle not coincident (VGSI Angle 3.00/TCH 71).

2000

GREKO

\* Check ALT.



CATEGORY	A	B	C	D
LNAV MDA		1160-4	1153 (1200-4)	

TDZ/CL Rwy 4, 13 and 22  
 HIRL Rwy 4-22 and 13-31  
 REIL Rwy 31

NE-2, 19 MAY 2022 to 16 JUN 2022

NE-2, 19 MAY 2022 to 16 JUN 2022