

WAAS CH 60918 W04A	APP CRS 044°	Rwy Idg TDZE Apt Elev	7001 21 21
--	------------------------	-----------------------------	---------------------------------------

RNAV (GPS) Y RWY 4

LAGUARDIA (LGA)

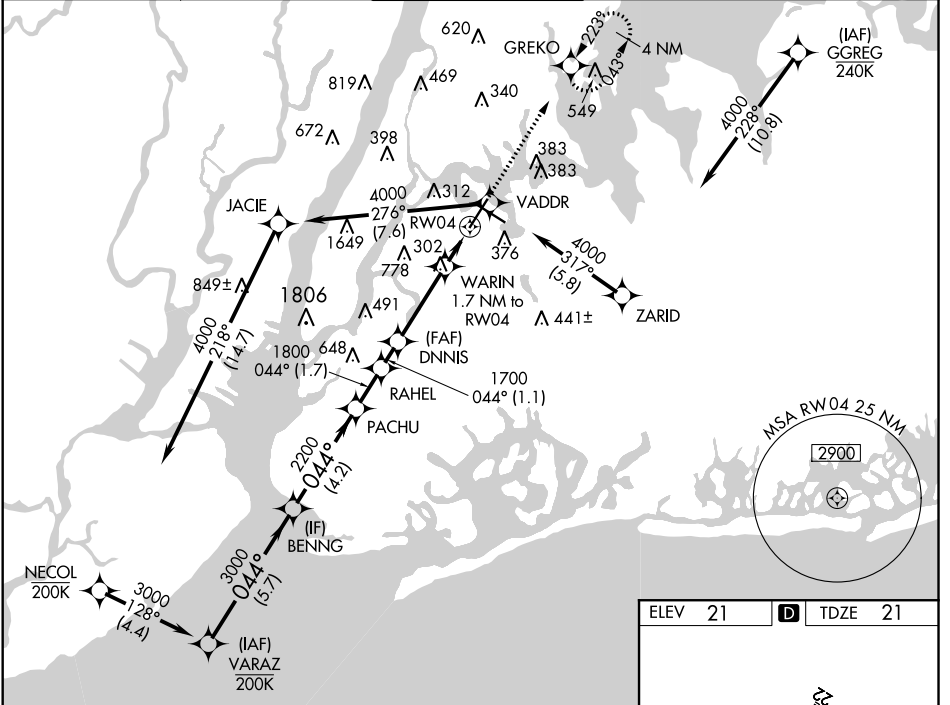
RNP APCH - GPS

▼ Rwy 4 helicopter visibility reduction below RVR 5000 NA. Inop table does not apply to LPV all Cats and LNAV Cat A and B. For uncompensated Baro-VNAV systems, LNAV/VNAV NA below -12°C or above 54°C. For inop ALS, increase LNAV/VNAV Cat's visibility to 1½ SM. Circling NA northwest of Rwy 4 and southwest of Rwy 13. Going below glidepath may not provide obstacle clearance inside DA. Crossing Rwy threshold below charted TCH may not provide required visual area obstacle clearance. *RVR 2400 authorized with FD or AP or HUD to DA.



MISSED APPROACH:
Climb to 2000 direct GREKO and hold, continue climb-in-hold to 2000.

D-ATIS ARR	125.95	NEW YORK APP CON	120.8 263.0	LAGUARDIA TOWER	118.7 263.0	GND CON	121.7 263.0	CLNC DEL	135.2	CPDLC	
D-ATIS DEP	127.05										

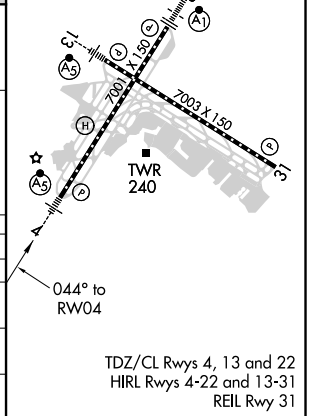


NE-2, 19 MAY 2022 to 16 JUN 2022

NE-2, 19 MAY 2022 to 16 JUN 2022

ELEV	21	D	TDZE	21
------	----	---	------	----

BENNG		PACHU		RAHEL		DNNIS		WARIN		RW04		GREKO		
3000		2200		1800		1700		640				2000		
GP 3.14°		044°												
TCH 54														
4.2 NM		1.7 NM		1.1 NM		3.2 NM		1.7 NM						
CATEGORY	A		B		C		D							
LPV DA *			271/40		250 (300-¾)									
LNAV/VNAV DA			499/50		478 (500-1)									
LNAV MDA	560/50		539 (600-1)		560/55		539 (600-1)							
CIRCLING	680-1		659 (700-1)		700-2		679 (700-2)		760-2¼		739 (800-2¼)			



TDZ/CL Rws 4, 13 and 22
HIRL Rws 4-22 and 13-31
REIL Rwy 31