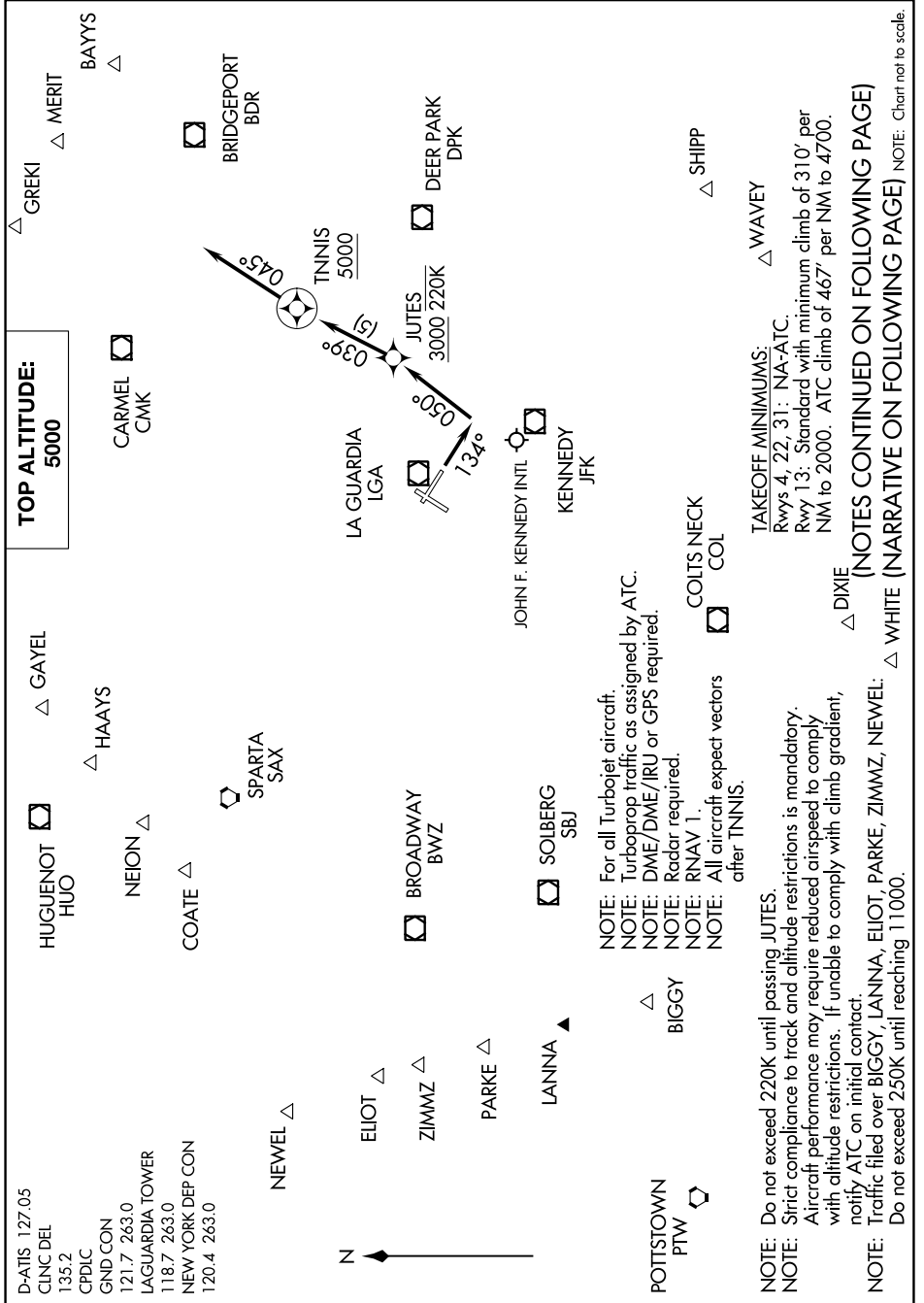


TNNIS SIX DEPARTURE (RNAV)

NE-2, 19 MAY 2022 to 16 JUN 2022



D-ATIS 127.05
 CINCDL 135.2
 CPDLC
 GND CON 121.7 263.0
 LAGUARDIA TOWER 118.7 263.0
 NEW YORK DEP CON 120.4 263.0

NOTE: For all Turbojet aircraft.
 NOTE: Turboprop traffic as assigned by ATC.
 NOTE: DME/DME/IRU or GPS required.
 NOTE: Radar required.
 NOTE: RNAV 1.
 NOTE: All aircraft expect vectors after TNNIS.

NOTE: Do not exceed 220K until passing JUTES
 NOTE: Strict compliance to track and altitude restrictions is mandatory.
 NOTE: Aircraft performance may require reduced airspeed to comply with altitude restrictions. If unable to comply with climb gradient, notify ATC on initial contact.
 NOTE: Traffic filed over BIGGY, LANNA, ELIOT, PARKE, ZIMMZ, NEWEL: Do not exceed 250K until reaching 11000.

TAKEOFF MINIMUMS:
 Rwy 4, 22, 31: NA-ATC.
 Rwy 13: Standard with minimum climb of 310' per NMI to 2000. ATC climb of 467' per NMI to 4700.

(NOTES CONTINUED ON FOLLOWING PAGE)
 (NOTES CONTINUED ON FOLLOWING PAGE) NOTE: Chart not to scale.

TNNIS SIX DEPARTURE (RNAV)

NE-2, 19 MAY 2022 to 16 JUN 2022