

ILS or LOC RWY 3 OGDEN-HINCKLEY (OGD)

| | | |
|---|------------------------|---|
| LOC/DME I-OGD 111.7 Chan 54 | APP CRS 034° | Rwy Idg 7252 TDZE 4473 Apt Elev 4473 |
|---|------------------------|---|

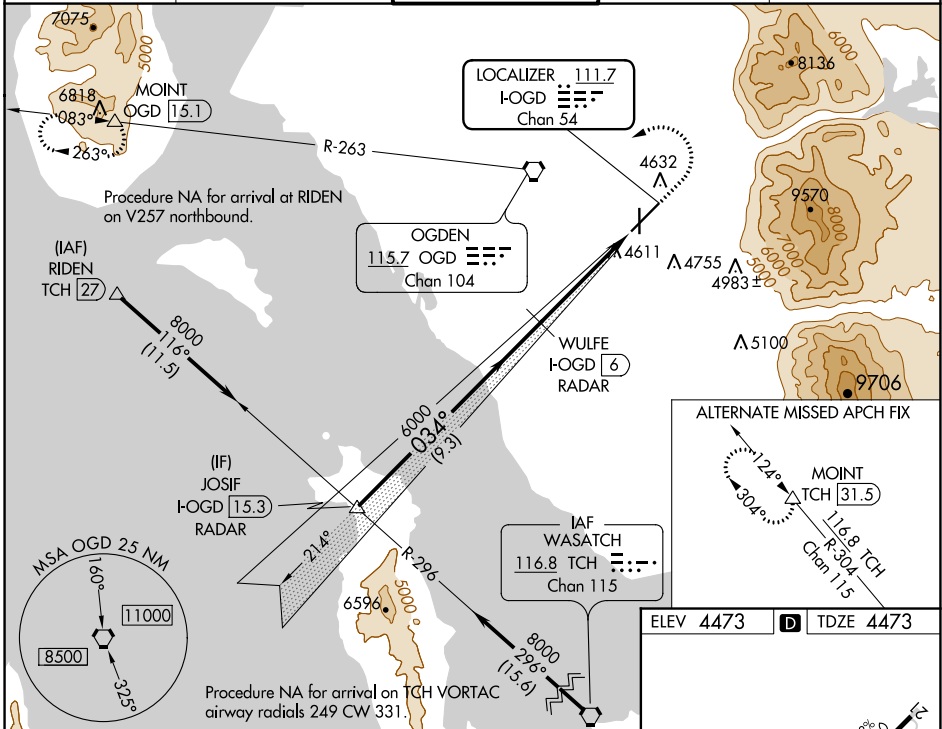
DME required. RADAR required for procedure entry.

▼ Rwy 3 helicopter visibility reduction below 3/4 SM NA. For inop ALS, increase S-ILS 3 all Cats visibility to 3/8 SM. For inop ALS, increase S-LOC 3 Cat C/D visibility to 1 1/8 SM. Circling NA for Cats C and D east of Rwy 21 and 35.

MALS

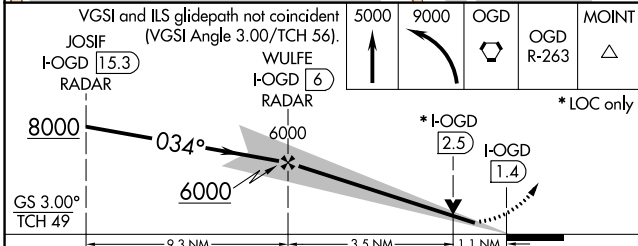
MISSED APPROACH: Climb to 5000 then climbing left turn to 9000 direct OGD VORTAC and on OGD VORTAC R-263 to MOINT/OGD 15.1 DME and hold, continue climb-in-hold to 9000.

| | | | | |
|-----------------------|---|---|-------------------------|-------------------------|
| ATIS 125.55 | SALT LAKE CITY APP CON 121.1 319.25 | OGDEN TOWER* 118.7 (CTAF) 0 253.5 | GND CON 121.7 | UNICOM 122.95 |
|-----------------------|---|---|-------------------------|-------------------------|



SW-4, 19 MAY 2022 to 16 JUN 2022

SW-4, 19 MAY 2022 to 16 JUN 2022



| | | |
|--|------|---------------------|
| ELEV 4473 | D | TDZE 4473 |
| | | |
| HIRL Rwy 3-21 (1) MRL Rwy 17-35 (1) REIL Rwy 17 and 35 (1) | | |
| FAF to MAP 4.6 NM | | |
| Knots | 60 | 90 120 150 180 |
| Min:Sec | 4:36 | 3:04 2:18 1:50 1:32 |

| CATEGORY | A | B | C | D |
|-------------------|------------------------|-----------------------|-------------------------------|-------------------------------|
| S-ILS 3 | 4740-3/4 267 (300-3/4) | | | |
| S-LOC 3 | 4880-3/4 | 407 (500-3/4) | 4880-1 | 407 (500-1) |
| C CIRCLING | 4980-1 507 (600-1) | 5100-1 627 (700-1) | 5100-1 3/4 627 (700-1 3/4) | 5180-2 1/4 707 (800-2 1/4) |