

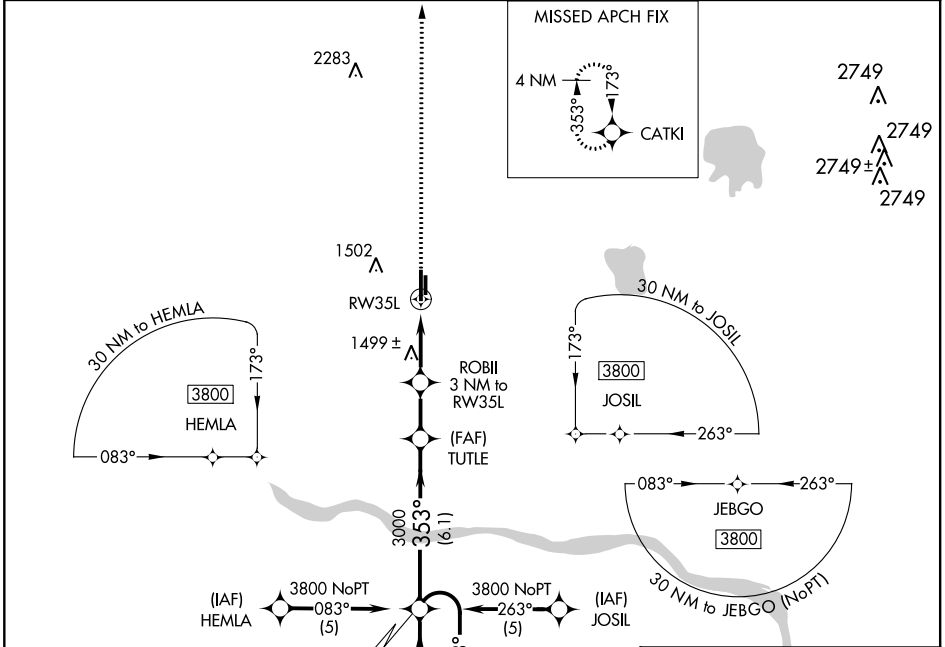
WAAS CH <b>86901</b> <b>W35A</b>	APP CRS <b>353°</b>	Rwy ldg <b>6014</b> TDZE <b>1350</b> Apt Elev <b>1354</b>
--	------------------------	---

# RNAV (GPS) RWY 35L

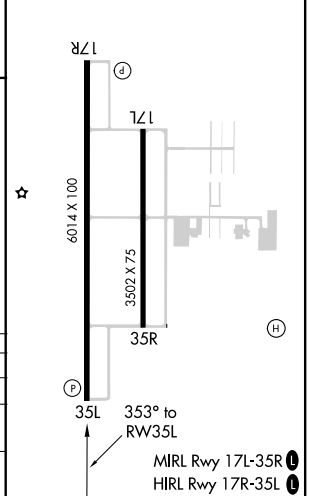
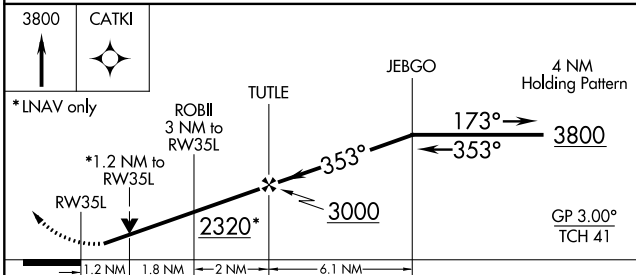
CLARENCE E PAGE MUNI (R/C/E)

<p><b>▼</b> DME/DME RNP-0.3 NA. Visibility reduction by helicopters NA. When local altimeter setting not received, use Wiley Post altimeter setting and increase all DA 29 feet and all MDA 40 feet and increase LPV all Cats visibility 1/2 mile.</p> <p><b>▲</b> VDP NA when using Wiley Post altimeter setting.</p>	<p>MISSED APPROACH: Climb to 3800 direct CATKI and hold.</p>
--	--

<p>AWOS-3 <b>125.05</b></p>	<p>OKE CITY APP CON <b>124.6 266.8</b></p>	<p>UNICOM <b>123.0 (CTAF) 0</b></p>
---------------------------------	--	---



ELEV 1354	TDZE 1350
-----------	-----------



CATEGORY	A	B	C	D
LPV DA	1651-1 301 (300-1)			NA
LNAV MDA	1760-1	410 (500-1)	1760-1 1/4 410 (500-1 1/4)	NA
CIRCLING	1800-1 446 (500-1)	1820-1 466 (500-1)	1840-1 1/2 486 (500-1 1/2)	NA

SC-1, 19 MAY 2022 to 16 JUN 2022

SC-1, 19 MAY 2022 to 16 JUN 2022