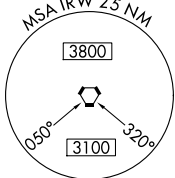
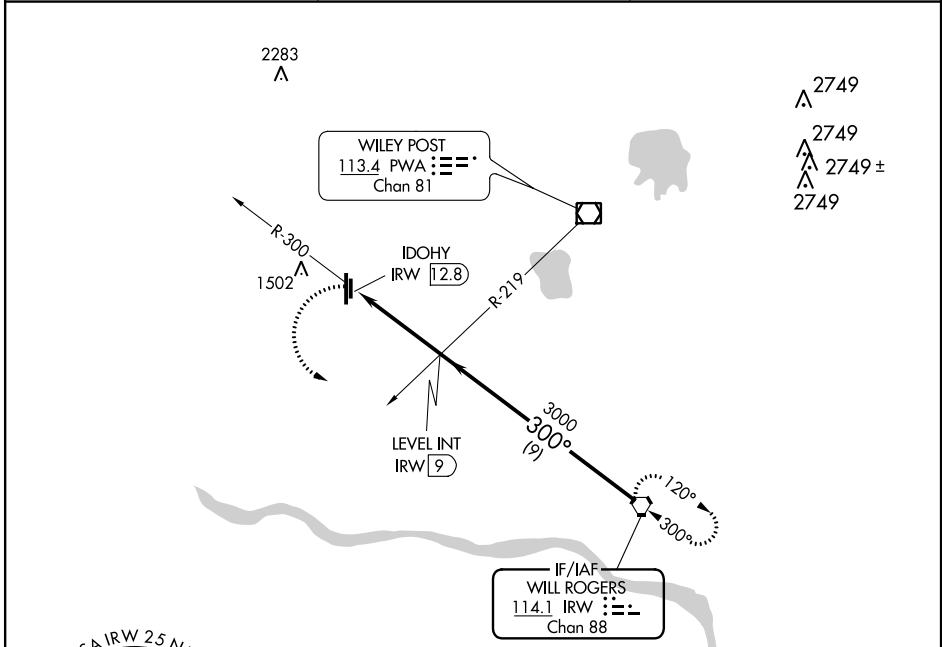


VORTAC IRW <b>114.1</b> Chan <b>88</b>	APP CRS <b>300°</b>	Rwy Idg TDZE Apt Elev <b>N/A</b> <b>N/A</b> <b>1354</b>
--	------------------------	--

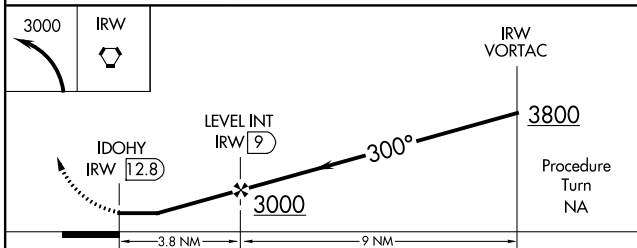
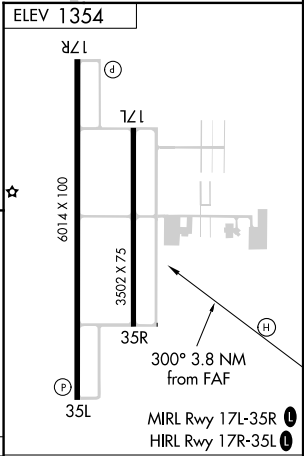
**VOR-B**  
CLARENCE E PAGE MUNI (R/C/E)

**▽** When local altimeter setting not received, use Wiley Post altimeter setting and increase all MDA 40 feet. **▲** MISSED APPROACH: Climbing left turn to 3000 direct IRW VORTAC and hold.

AWOS-3 <b>125.05</b>	OKE CITY APP CON <b>124.6 266.8</b>	UNICOM <b>123.0 (CTAF) 0</b>
-------------------------	--	---------------------------------



Procedure NA for arrival at IRW VORTAC on airway radials 241 CW 292.



CATEGORY	A	B	C	D	FAF to MAP 3.8 NM					
CIRCLING	1860-1	506 (600-1)	1860-1½ 506 (600-1½)	NA	Knots	60	90	120	150	180
					Min:Sec	3:48	2:32	1:54	1:31	1:16

SC-1, 19 MAY 2022 to 16 JUN 2022

SC-1, 19 MAY 2022 to 16 JUN 2022