

GULLI THREE ARRIVAL

OKLAHOMA CITY, OKLAHOMA

OKC APP CON
 124.2 336.4
 KTIK ATIS*
 270.1
 OKC D-ATIS
 125.85
 PWA ATIS
 128.725

PIONEER
 113.2 PER
 Chan 79
 N36° 44.79' - W97° 09.61'
 L-15, H-6

BARTLESVILLE
 117.9 BVO
 Chan 126
 N36° 50.06' - W96° 01.11'
 L-15, H-6

#4000 for BARTLESVILLE Transition.

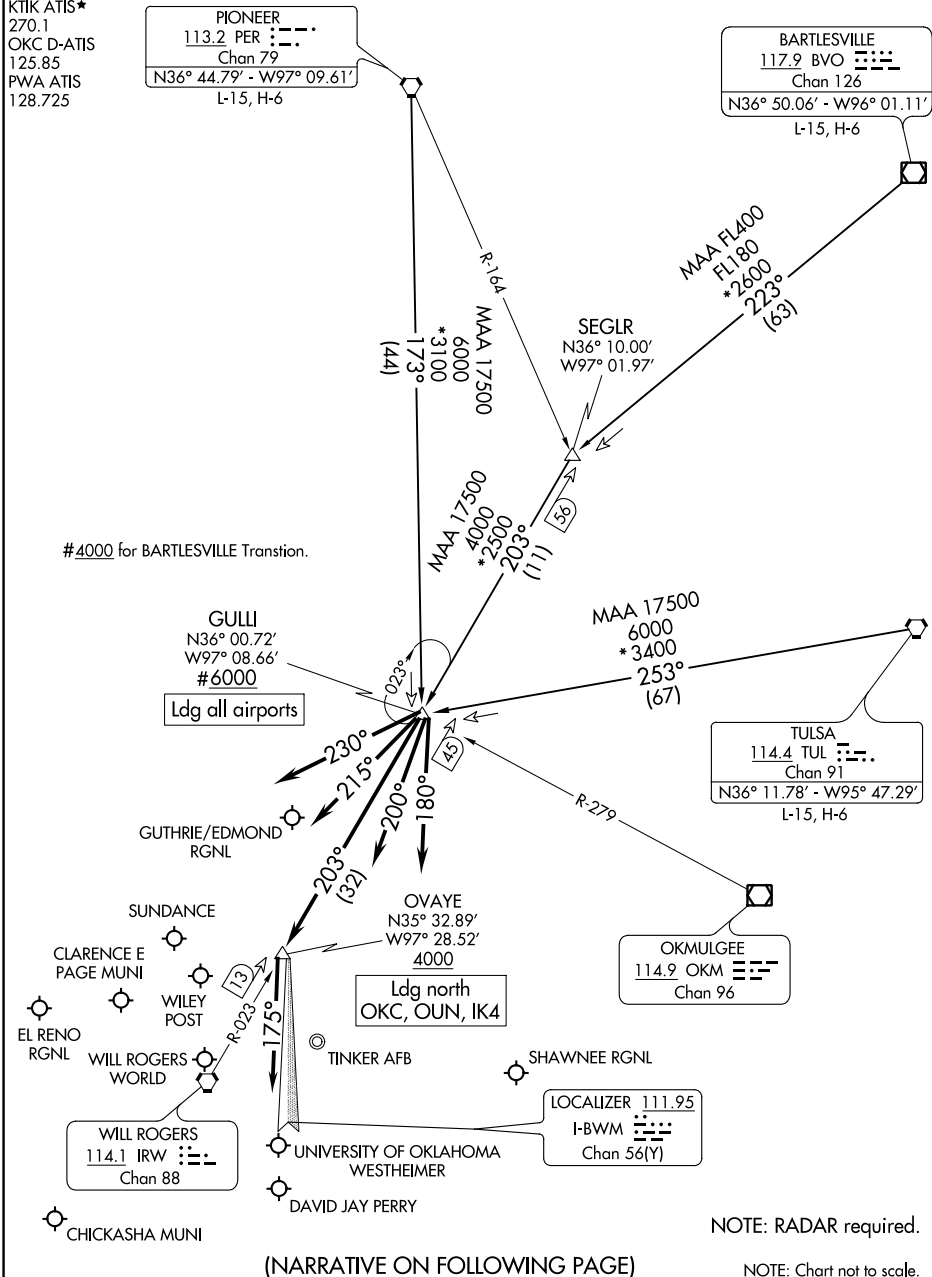
GULLI
 N36° 00.72'
 W97° 08.66'
 #6000
 Ldg all airports

TULSA
 114.4 TUL
 Chan 91
 N36° 11.78' - W95° 47.29'
 L-15, H-6

OKMULGEE
 114.9 OKM
 Chan 96

WILL ROGERS
 114.1 IRW
 Chan 88

LOCALIZER 111.95
 I-BWM
 Chan 56(Y)



SC-1, 19 MAY 2022 to 16 JUN 2022

SC-1, 19 MAY 2022 to 16 JUN 2022

NOTE: RADAR required.

NOTE: Chart not to scale.

(NARRATIVE ON FOLLOWING PAGE)

GULLI THREE ARRIVAL

(GULLI.GULLI3) 19MAY22

OKLAHOMA CITY, OKLAHOMA