

WAAS CH <b>53630</b> <b>W13A</b>	APP CRS <b>132°</b>	Rwy Idg <b>5001</b> TDZE <b>13</b> Aprt Elev <b>14</b>
--	------------------------	--

# RNAV (GPS) RWY 13

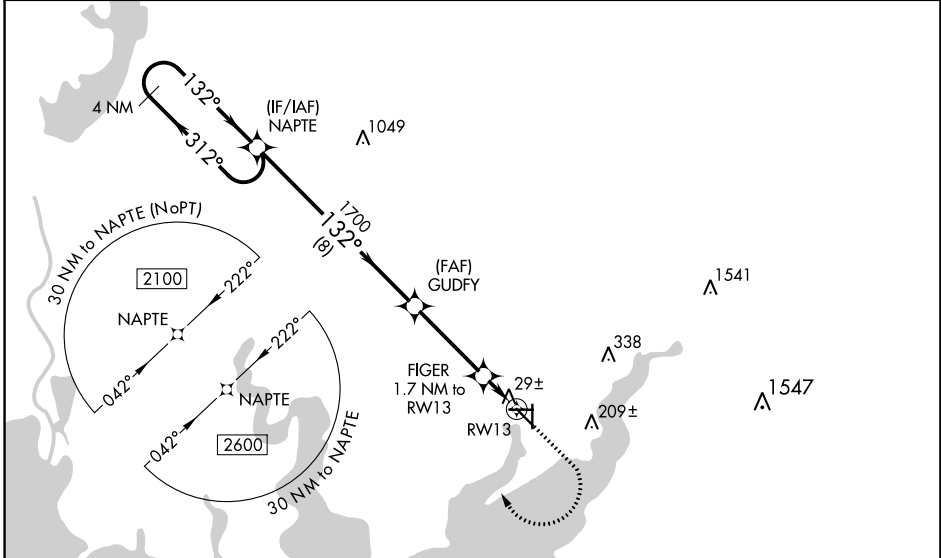
PALACIOS MUNI (PSX)

RNP APCH.

▼ For uncompensated Baro-VNAV systems, LNAV/VNAV NA below -20°C or above 54°C.  
 ▲ When local altimeter setting not received, use Port Lavaca altimeter setting: Increase DA to 319 feet and visibility all Cats ½ SM; increase all MDA 60 feet and LNAV Cat C/D and Circling Cat C/D visibility ¼ SM. Baro-VNAV and VDP NA when using Port Lavaca altimeter setting. Rwy 13 helicopter visibility reduction below ¾ SM NA. Circling Rwy 8, 18, 26, 31, 36 NA at night.

MISSED APPROACH:  
 Climb to 500 then climbing right turn to 2100 direct NAPTE and hold.

ASOS <b>118.025</b>	HOUSTON CENTER <b>128.6 360.8</b>	UNICOM <b>122.8 (CTAF)</b>
------------------------	--------------------------------------	-------------------------------



SC-5, 19 MAY 2022 to 16 JUN 2022

SC-5, 19 MAY 2022 to 16 JUN 2022

ELEV 14		TDZE 13	
---------	--	---------	--

4 NM Holding Pattern

GP 3.00°  
TCH 40

500 2100 NAPTE

2100 ← 312°

GP 3.00°  
TCH 40

1700

\*580

1.7 NM to RWY13

\*0.7 NM to RWY13

\*LNAV only.

CATEGORY	A	B	C	D
LPV DA		263-7/8	250 (300-7/8)	
LNAV/VNAV DA		263-7/8	250 (300-7/8)	
LNAV MDA	280-1	267 (300-1)	280-7/8	267 (300-7/8)
CIRCLING	460-1 446 (500-1)	480-1 466 (500-1)	560-1½ 546 (600-1½)	700-2¼ 686 (700-2¼)

REIL Rws 13 and 31

MIRL Rwy 13-31