

WAAS CH <b>62900</b> <b>W10A</b>	APP CRS <b>097°</b>	Rwy Idg TDZE Apt Elev	<b>5801</b> <b>4661</b> <b>4697</b>
--	------------------------	-----------------------------	---

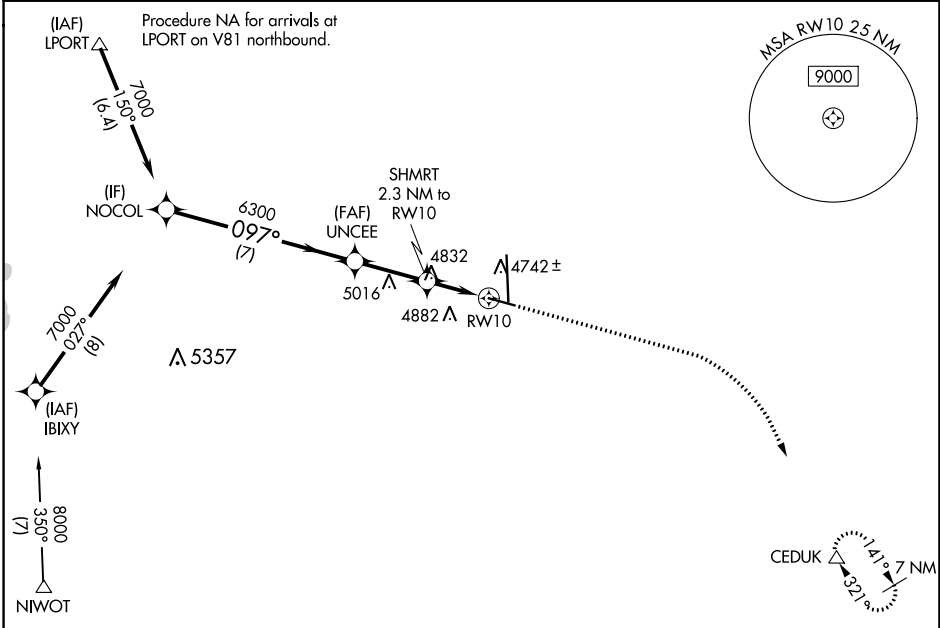
# RNAV (GPS) RWY 10

GREELEY-WELD COUNTY (GXY)

RNP APCH.  
 For uncompensated Baro-VNAV systems, LNAV/VNAV NA below -24°C or above 54°C.

MISSED APPROACH: Climb to 5400 then climbing right turn to 7000 direct CEDUK and hold.

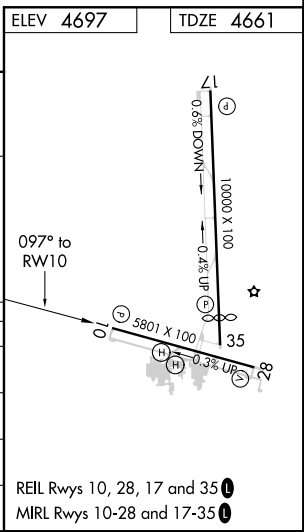
AWOS-3PT <b>135.175</b>	DENVER APP CON <b>134.85 251.125</b>	CLNC DEL <b>126.65</b>	UNICOM <b>122.8 (CTAF) 0</b>
----------------------------	---	---------------------------	---------------------------------



SW-1, 19 MAY 2022 to 16 JUN 2022

SW-1, 19 MAY 2022 to 16 JUN 2022

VGSI and RNAV glidepath not coincident NOCOL (VGSI Angle 3.00/TCH 43).		5400	7000	CEDUK
UNCEE		*LNAV only		
7000		SHMRT 2.3 NM to RWY10		
GP 3.00°		*1.4 NM to RWY10		
TCH 50		RWY10		
7 NM		2.7 NM		0.9 NM
6300		*5440		
CATEGORY	A	B	C	D
LPV DA		4911-3/4	250 (300-3/4)	
LNAV/VNAV DA		4920-3/4	259 (300-3/4)	
LNAV MDA	5140-1	479 (500-1)	5140-1 3/8	479 (500-1 3/8)
CIRCLING	5140-1 443 (500-1)	5200-1 503 (600-1)	5200-1 1/2 503 (600-1 1/2)	5380-2 1/4 683 (700-2 1/4)



REIL Rwy 10, 28, 17 and 35  
 MIREL Rwy 10-28 and 17-35