

WAAS CH 72708 W17A	APP CRS 170°	Rwy Idg TDZE Apt Elev	10000 4697 4697
---------------------------------	------------------------	-----------------------------	--

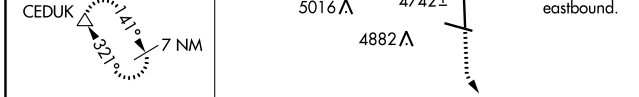
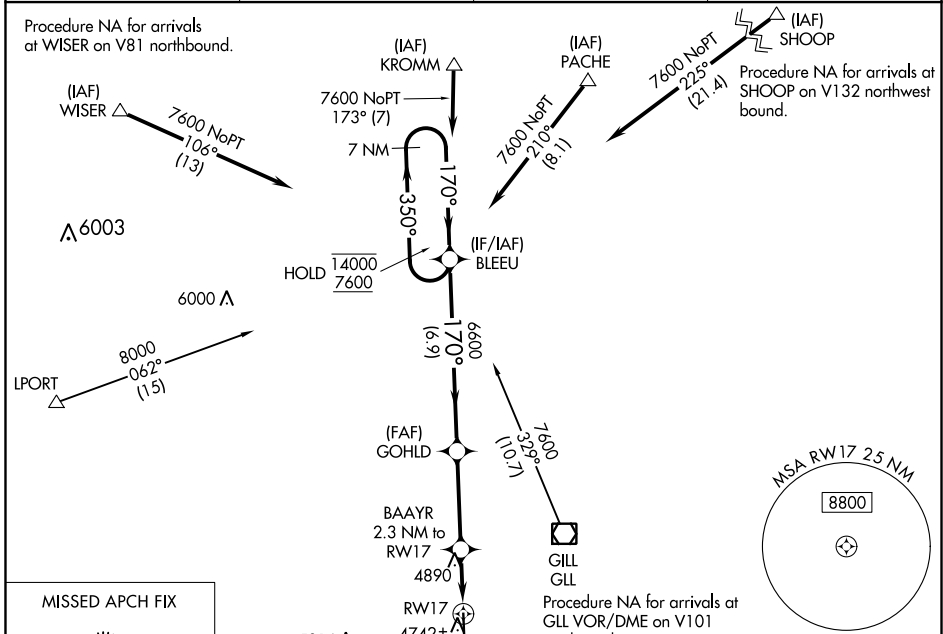
RNAV (GPS) RWY 17

GREELEY-WELD COUNTY (GXY)

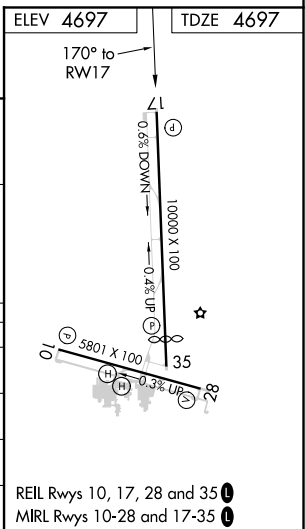
RNP APCH.
 For uncompensated Baro-VNAV systems, LNAV/VNAV NA below -24°C or above 54°C.

MISSED APPROACH: Climb to 5400 then climbing left turn to 7000 direct CEDUK and hold.

AWOS-3PT 135.175	DENVER APP CON 134.85 251.125	CLNC DEL 126.65	UNICOM 122.8 (CTAF)
----------------------------	---	---------------------------	-------------------------------



CATEGORY	A	B	C	D
LPV DA		4897-3/4	200 (200-3/4)	
LNAV/VNAV DA		4969-7/8	272 (300-7/8)	
LNAV MDA	5140-1	443 (500-1)	5140-1 1/2 443 (500-1 1/2)	5140-2 1/4 443 (500-2 1/4)
CIRCLING	5140-1 443 (500-1)	5200-1 503 (600-1)	5200-1 1/2 503 (600-1 1/2)	5380-2 1/4 683 (700-2 1/4)



SW-1, 19 MAY 2022 to 16 JUN 2022

SW-1, 19 MAY 2022 to 16 JUN 2022