

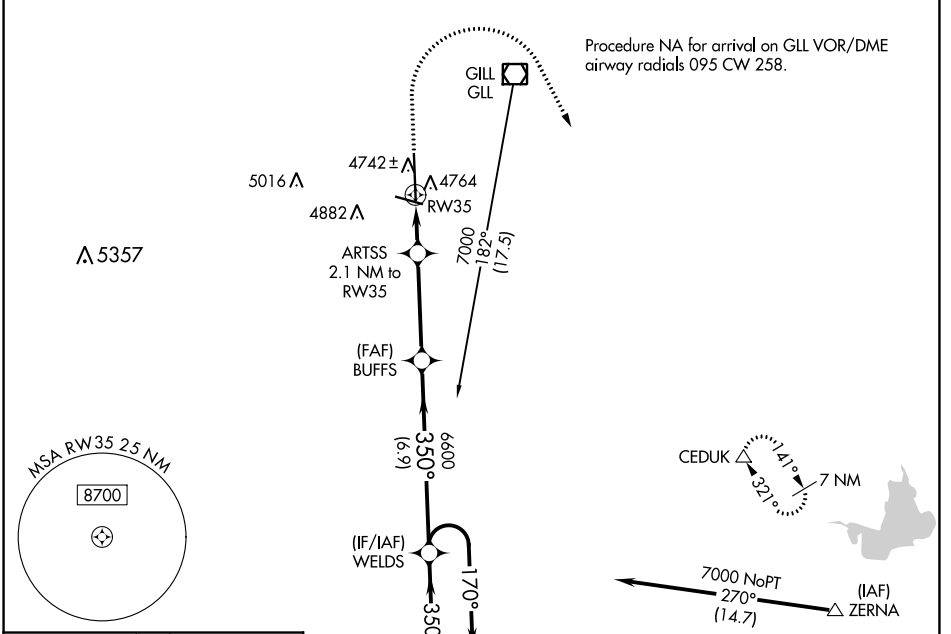
WAAS CH <b>69607</b> <b>W35A</b>	APP CRS <b>350°</b>	Rwy Idg TDZE Apt Elev	<b>8900</b> <b>4665</b> <b>4697</b>
----------------------------------------	------------------------	-----------------------------	-------------------------------------------

# RNAV (GPS) RWY 35

GREELEY-WELD COUNTY (GXY)

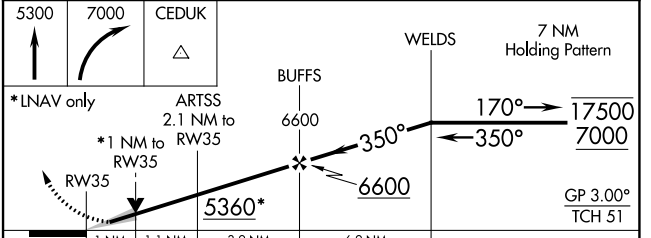
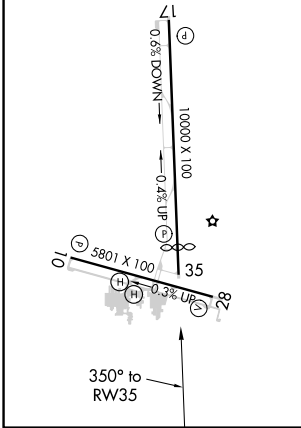
RNP APCH.	MISSED APPROACH: Climb to 5300 then climbing right turn to 7000 direct CEDUK and hold.
▼ ▲	For uncompensated Baro-VNAV systems, LNAV/VNAV NA below -24°C or above 54°C.

AWOS-3PT <b>135.175</b>	DENVER APP CON <b>134.85 251.125</b>	CLNC DEL <b>126.65</b>	UNICOM <b>122.8 (CTAF)</b>
----------------------------	-----------------------------------------	---------------------------	-------------------------------



ELEV <b>4697</b>	TDZE <b>4665</b>
------------------	------------------

REIL Rwy 10, 17, 28 and 35  
MIRL Rwy 10-28 and 17-35



CATEGORY	A	B	C	D
LPV DA		4865- <sup>3</sup> / <sub>4</sub>	200 (200- <sup>3</sup> / <sub>4</sub> )	
LNAV/VNAV DA		4935- <sup>7</sup> / <sub>8</sub>	270 (300- <sup>7</sup> / <sub>8</sub> )	
LNAV MDA	5020-1	355 (400-1)	5020-1 <sup>1</sup> / <sub>8</sub>	355 (400-1 <sup>1</sup> / <sub>8</sub> )
<input checked="" type="checkbox"/> CIRCLING	5120-1 423 (500-1)	5200-1 503 (600-1)	5200-1 <sup>1</sup> / <sub>2</sub> 503 (600-1 <sup>1</sup> / <sub>2</sub> )	5380-2 <sup>1</sup> / <sub>4</sub> 683 (700-2 <sup>1</sup> / <sub>4</sub> )

SW-1, 19 MAY 2022 to 16 JUN 2022

SW-1, 19 MAY 2022 to 16 JUN 2022