

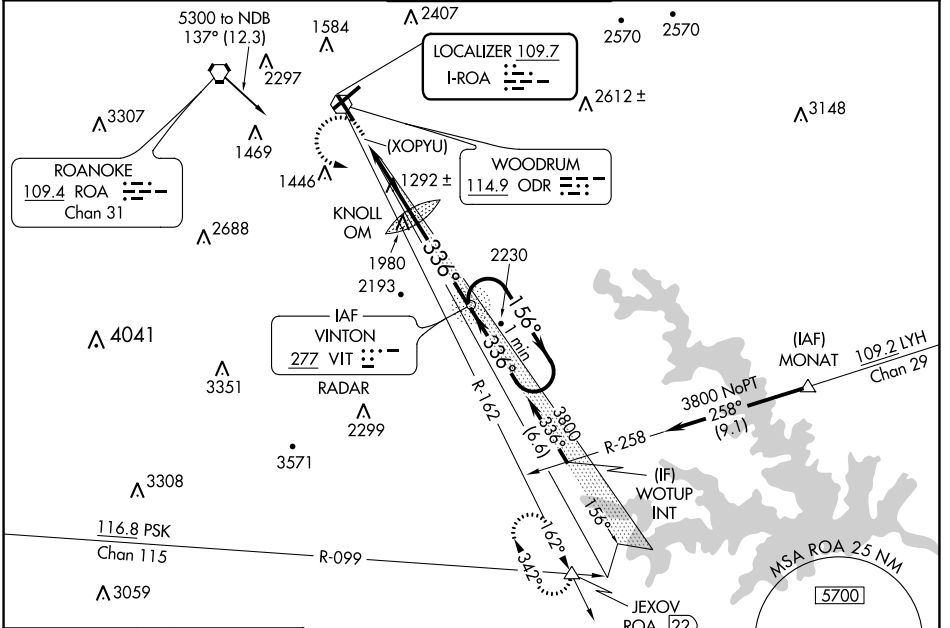
LOC I-ROA <b>109.7</b>	APP CRS <b>336°</b>	Rwy ldg <b>5810</b> TDZE <b>1160</b> Apt Elev <b>1175</b>
---------------------------	------------------------	--

# ILS or LOC RWY 34

ROANOKE/BLACKSBURG RGNL (WOODRUM FLD) (R.O.A)

<p>-13°C</p>	<p>Circling NA northwest of Rwy 6-24. ADF or RADAR required. For inop MALSRL, increase S-ILS 34 all Cats visibility ½ mile and S-LOC 34 Cat B ¼ mile, Cats C/D ⅝ mile. Inop table does not apply to S-LOC 34 Cat A.</p>	<p>MALSRL</p>	<p>MISSED APPROACH: Climb to 2100 then climbing left turn to 5000 on heading 125° and ODR R-162 to JEXOV INT/ROA 22 DME and hold.</p>	
				<p>ATIS <b>132.375</b></p>

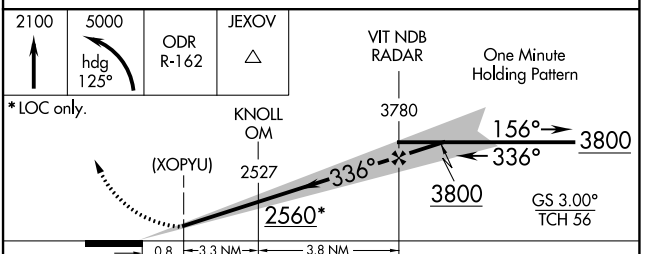
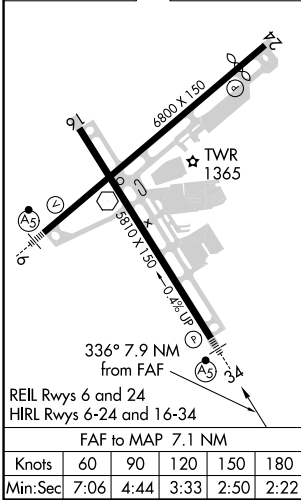
ATIS <b>132.375</b>	ROANOKE APP CON <b>126.9 339.8</b>	ROANOKE TOWER <b>118.3 257.8</b>	GND CON <b>121.9 257.8</b>	CLNC DEL <b>119.7</b>
------------------------	---------------------------------------	-------------------------------------	-------------------------------	--------------------------



NE-3, 19 MAY 2022 to 16 JUN 2022

NE-3, 19 MAY 2022 to 16 JUN 2022

ELEV 1175		TDZE 1160
-----------	--	-----------



CATEGORY	A	B	C	D
S-ILS 34	1810-1¾	650 (700-1¾)		1913-2¼ 753 (700-2¼)
S-LOC 34	1980-1	820 (900-1)	1980-1⅞	820 (900-1⅞)
CIRCLING	1980-1 805 (900-1)	1980-1¼ 805 (900-1¼)	2420-3 1245 (1300-3)	2800-3 1625 (1700-3)

# ILS or LOC RWY 34