

APP CRS	Rwy Idg	<b>6010</b>
<b>238°</b>	TDZE	<b>1170</b>
	Apt Elev	<b>1175</b>

# RNAV (RNP) Z RWY 24

ROANOKE/BLACKSBURG RGNL (WOODRUM FLD) (R.O.A)

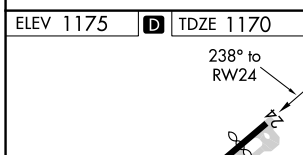
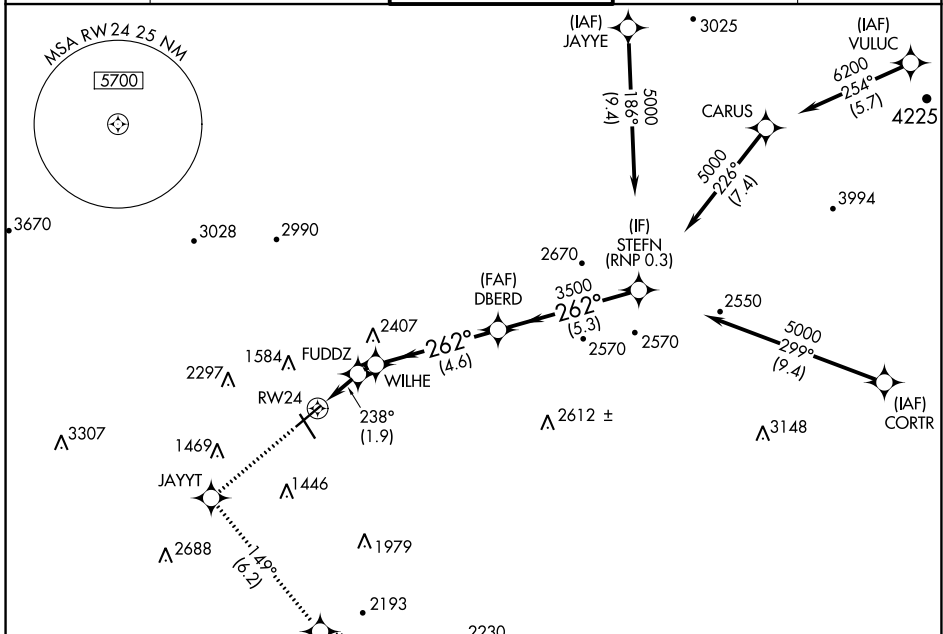
RNP AR APCH. RF required.

**▼** For uncompensated Baro-VNAV systems, procedure NA below -14°C or above 54°C.

**⚠** -13°C

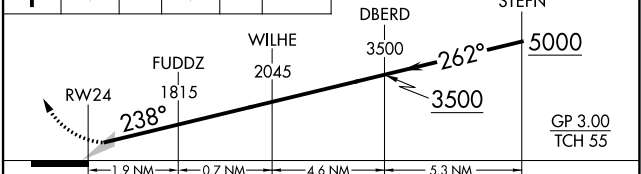
MISSED APPROACH: Climb to 4000 direct JAYYT and on track 149° to TPUCK and on track 107° to MONAT and hold. # Missed approach requires minimum climb of 217 feet per NM to 3200.

ATIS	ROANOKE APP CON	ROANOKE TOWER	GND CON	CLNC DEL
<b>132.375</b>	<b>126.9 339.8</b>	<b>118.3 257.8</b>	<b>121.9 257.8</b>	<b>119.7</b>



ELEV 1175	<b>D</b>	TDZE 1170
<p>238° to RW24</p> <p>8800 Y 150</p> <p>TWR 1365</p> <p>107° to RW6</p> <p>3045 FT</p>		
<p>REIL Rws 6 and 24</p> <p>HIRL Rws 6-24 and 16-34</p>		

4000	JAYYT	tr 149°	TPUCK	tr 107°	MONAT	VGSI and RNAV glidepath not coincident (VGSI Angle 3.00/TCH 58).
------	-------	---------	-------	---------	-------	--



CATEGORY	A	B	C	D
# RNP 0.15 DA		1491-1	321 (400-1)	
RNP 0.30 DA		1579-1 1/8	409 (500-1 1/8)	

## AUTHORIZATION REQUIRED

NE-3, 19 MAY 2022 to 16 JUN 2022

NE-3, 19 MAY 2022 to 16 JUN 2022