


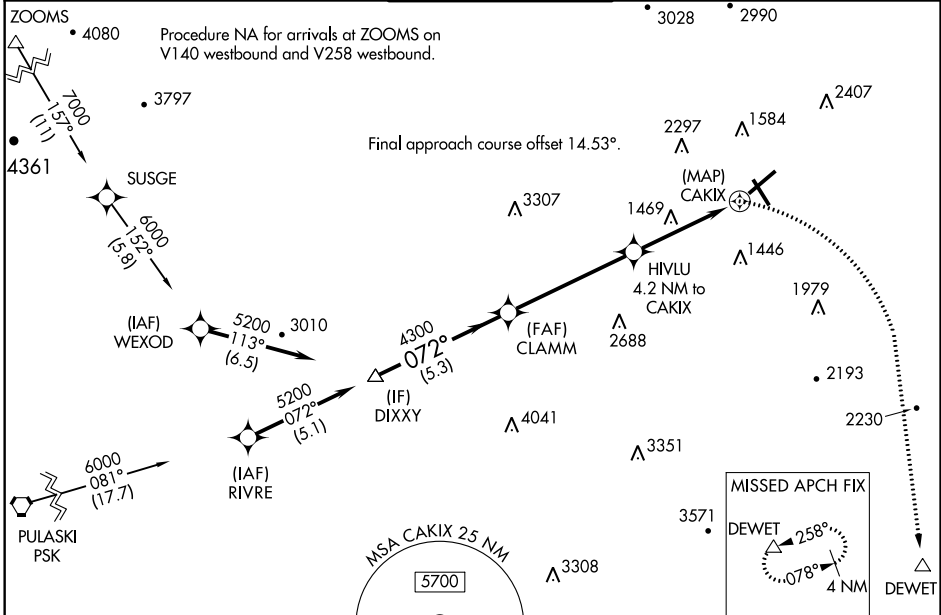
APP CRS	Rwy Idg	<b>6800</b>
<b>072°</b>	TDZE	<b>1175</b>
	Apt Elev	<b>1175</b>

# RNAV (GPS) Y RWY 6

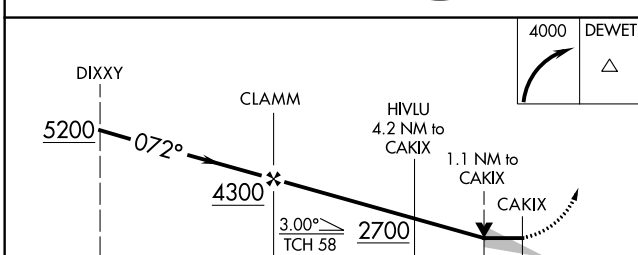
ROANOKE/BLACKSBURG RGNL (WOODRUM FLD) (R.O.A)

RNP APCH.	<p><b>⚠</b> Circling NA northwest of Rwy 6-24. For inop ALS, increase LNAV** Cat A and B visibility to 1 SM, LNAV Cat A visibility to 1 SM, and LNAV Cat C and D visibility to 1½ SM.</p> <p><b>⚠</b> -13°C</p>	<p>MALSR</p> 	<p>MISSED APPROACH: Climbing right turn to 4000 direct DEWET and hold. ** Missed approach requires minimum climb of 276 feet per NM to 2700.</p>
-----------	---	--	--

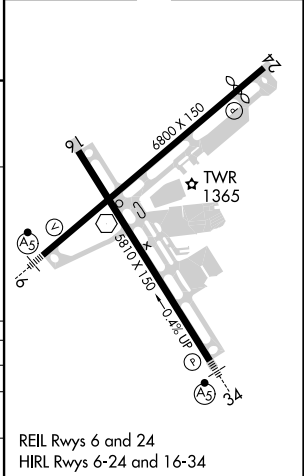
ATIS <b>132.375</b>	ROANOKE APP CON <b>126.9 339.8</b>	ROANOKE TOWER <b>118.3 257.8</b>	GND CON <b>121.9 257.8</b>	CLNC DEL <b>119.7</b>
------------------------	---------------------------------------	-------------------------------------	-------------------------------	--------------------------



Procedure NA for arrivals at PSK VORTAC on airway radials 069 CW 153.



ELEV 1175	<b>D</b>	TDZE 1175
-----------	----------	-----------



CATEGORY	A	B	C	D
LNAV MDA**	1720-¾	545 (600-¾)	1720-1⅞	545 (600-1⅞)
LNAV MDA	1980-¾	805 (900-¾)	1980-1⅞	805 (900-1⅞)
<b>C</b> CIRCLING	1980-1 805 (900-1)	1980-1¼ 805 (900-1¼)	2420-3 1245 (1300-3)	2820-3 1645 (1700-3)

REIL Rwy 6 and 24  
HIRL Rwy 6-24 and 16-34

# RNAV (GPS) Y RWY 6

NE-3, 19 MAY 2022 to 16 JUN 2022

NE-3, 19 MAY 2022 to 16 JUN 2022