

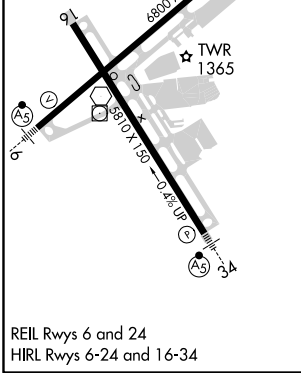
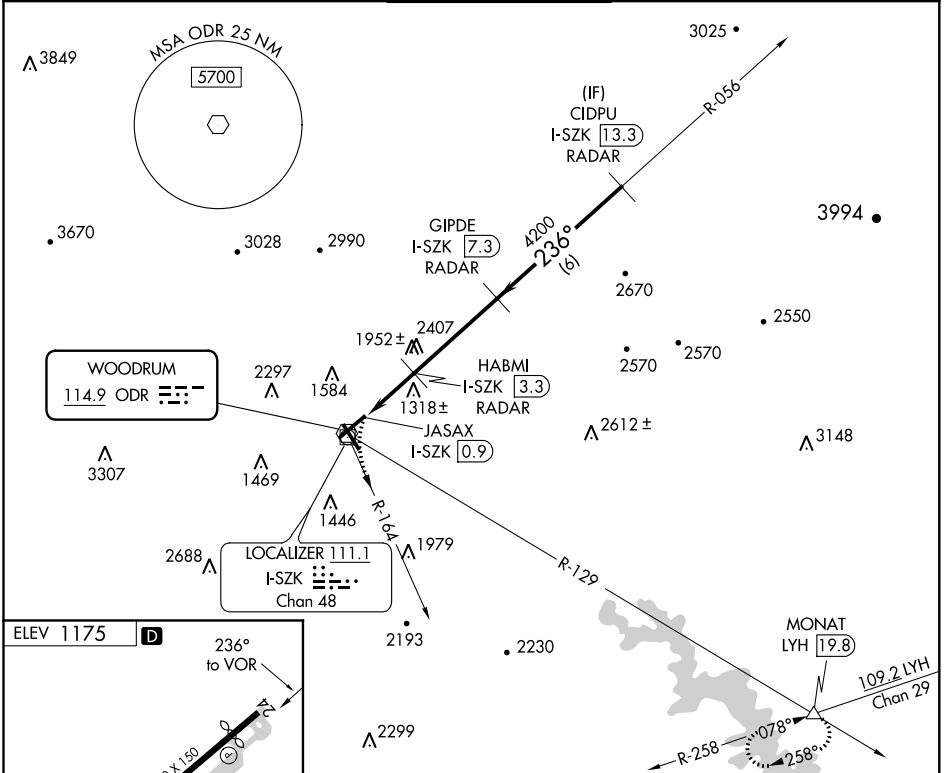
VOR ODR <b>114.9</b>	APP CRS <b>236°</b>	Rwy ldg TDZE Apt Elev <b>N/A</b> <b>1175</b>
-------------------------	------------------------	---

# VOR/DME-A

ROANOKE/BLACKSBURG RGNL (WOODRUM FLD) (R.O.A)

RADAR required.		MISSED APPROACH: Climbing left turn to 4000 on ODR VOR R-164 and LYH VOR/DME R-258 to MONAT/LYH 19.8 DME and hold.		
		Circling NA northwest of Rwy 6-24. DME from I-SZK LDA. Simultaneous reception of ODR VOR and I-SZK DME required.		
-13°C				

ATIS <b>132.375</b>	ROANOKE APP CON <b>126.9 339.8</b>	ROANOKE TOWER <b>118.3 257.8</b>	GND CON <b>121.9 257.8</b>	CLNC DEL <b>119.7</b>
------------------------	---------------------------------------	-------------------------------------	-------------------------------	--------------------------



ELEV 1175	D	236° to VOR
4000 ODR R-164	LYH R-258	MONAT
JASAX I-SZK 0.9	HABMI I-SZK 3.3	GIPDE I-SZK 7.3
		CIDPU I-SZK 13.3
2720	4200	4200
2.4 NM	4 NM	6 NM
5.69° TCH 50		
REIL Rwys 6 and 24	HIRL Rwys 6-24 and 16-34	
ROANOKE, VIRGINIA	Amdt 7B 15AUG19	
ROANOKE/BLACKSBURG RGNL (WOODRUM FLD) (R.O.A)	37°20'N-79°59'W	
VOR/DME-A		
CATEGORY	A	B
CIRCLING	1740-1	565 (600-1)
		C
		2420-3
		1245 (1300-3)
		D
		2800-3
		1625 (1700-3)

NE-3, 19 MAY 2022 to 16 JUN 2022

NE-3, 19 MAY 2022 to 16 JUN 2022