

LOC I-MCU <b>110.7</b>	APP CRS <b>044°</b>	Rwy ldg TDZE Apt Elev	<b>8001</b> <b>535</b> <b>559</b>
---------------------------	------------------------	-----------------------------	---

# ILS or LOC RWY 4

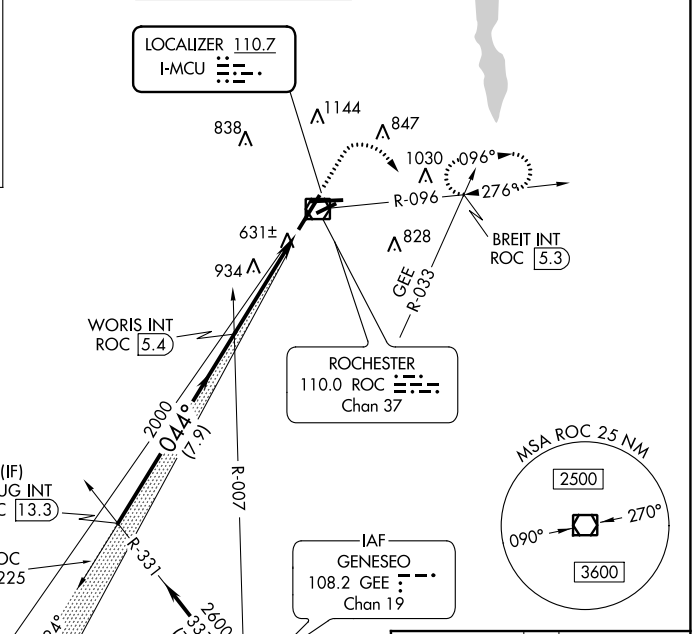
FREDERICK DOUGLASS/GREATER ROCHESTER INTL (ROC)

	ALSF-2	MISSED APPROACH: Climb to 1100 then climbing right turn to 3000 on heading 135° and ROC VOR/DME R-096 to BREIT INT/ROC 5.3 DME and hold, continue climb-in-hold to 3000.

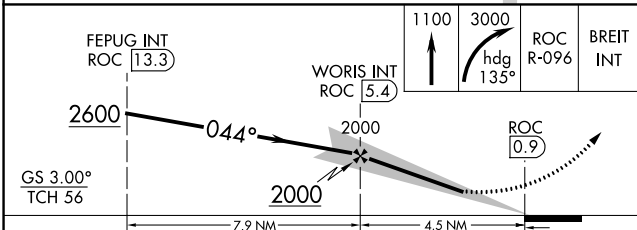
ATIS <b>124.825</b>	ROCHESTER APP CON <b>119.55 269.6</b>	ROCHESTER TOWER <b>118.3 254.3</b>	GND CON <b>121.7</b>	CLNC DEL <b>118.8 343.65</b>
------------------------	--	---------------------------------------	-------------------------	---------------------------------

ALTERNATE MISSED APCH FIX

GENESECO  
GEE  
108.2  
Chan 19



Procedure NA for arrivals at GEE VOR/DME on airway radials 287 CW 018.



ELEV	559	TDZE	535
------	-----	------	-----

Diagram details:
 

- TWR 696
- TDZ/CL Rwy 4: 4.5 NM from FAF
- REIL Rwy 7, 10 and 25
- MIRL Rwy 7-25
- HIRL Rwy 10-28 and 4-22
- FAF to MAP 4.5 NM
- Speeds: 60, 90, 120, 150, 180 knots
- Time: 4:30, 3:00, 2:15, 1:48, 1:30 min:sec

CATEGORY	A	B	C	D
S-ILS 4	735/18		200 (200-½)	
S-LOC 4	920/24	385 (400-½)	920/35	385 (400-¾)
CIRCLING	1060-1	501 (600-1)	1500-2¾	1500-3
			941 (1000-2¾)	941 (1000-3)

NE-2, 19 MAY 2022 to 16 JUN 2022

NE-2, 19 MAY 2022 to 16 JUN 2022