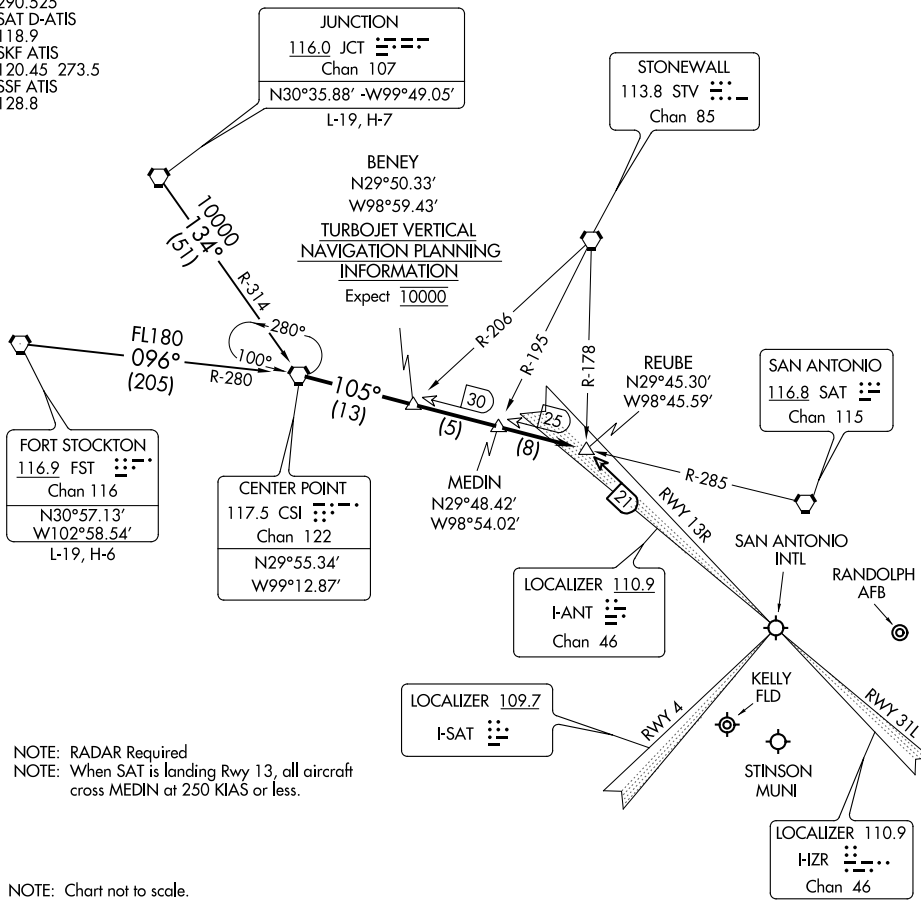


# CENTERPOINT TWO ARRIVAL

SAN ANTONIO, TEXAS

SAN ANTONIO APP CON  
 125.1 307.0 (Rwys 13R and 22)  
 125.7 290.225 (Rwys 4 and 31)  
 KRND ATIS ★  
 290.525  
 SAT D-ATIS  
 118.9  
 SKF ATIS  
 120.45 273.5  
 SSF ATIS  
 128.8



SC-3, 19 MAY 2022 to 16 JUN 2022

SC-3, 19 MAY 2022 to 16 JUN 2022

## ARRIVAL ROUTE DESCRIPTION

**FORT STOCKTON TRANSITION (FST.CS12):** From over FST VORTAC via FST R-096 and CSI R-280 to CSI VORTAC. Thence . . . .

**JUNCTION TRANSITION (JCT.CS12):** From over JCT VORTAC via JCT R-134 and CSI R-314 to CSI VORTAC. Thence . . . .

. . . . From over CSI VORTAC on CSI R-105 to REUBE INT. Expect vectors to final approach course.

# CENTERPOINT TWO ARRIVAL

SAN ANTONIO, TEXAS