

HI-ILS or LOC/DME Z RWY 16

LOC I-SKF 110.1	APCH CRS 158°	Rwy Idg 11,550 TDZE 690 Arprt Elev 690
---------------------------	-------------------------	----------------------------------------------------------------------------

JAL-371 [USAF]

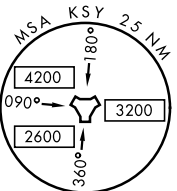
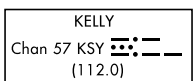
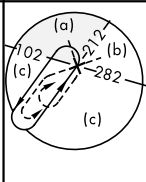
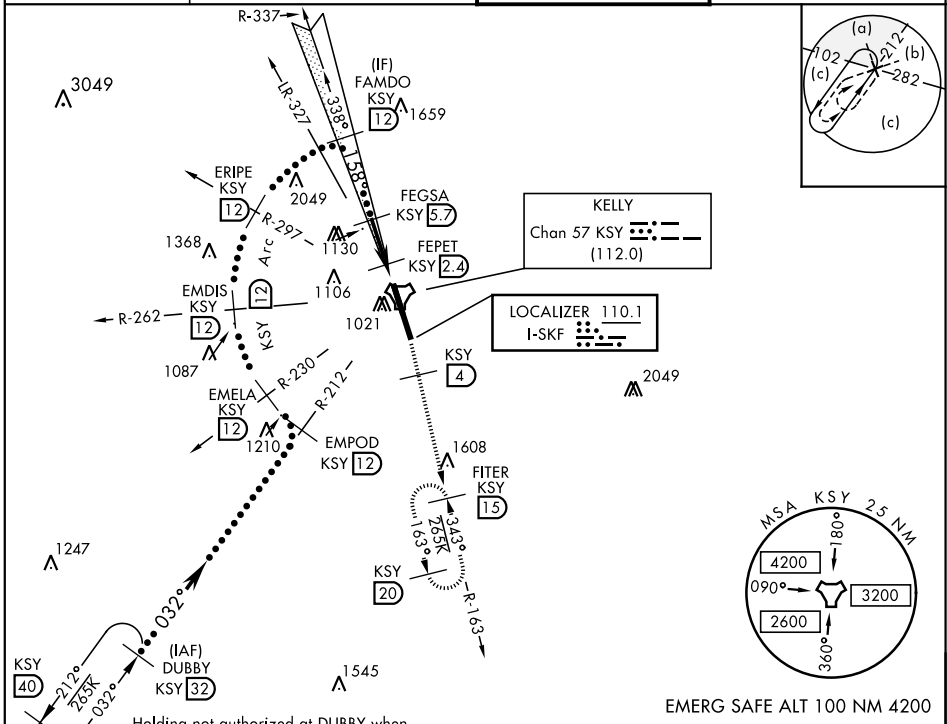
KELLY FLD (KSKF)

▼ *When ALS inop, increase RVR to 40 and vis to ¼ mile.
 **When ALS inop, increase RVR to 60 and vis to 1½ miles.
 ***Circling not authorized E of Rwy 16-34.



MISSED APPROACH: Climb to 2500 via KSY R-163 until 4 DME, then continue climb to 3000 to FITER/1.5 DME and hold.

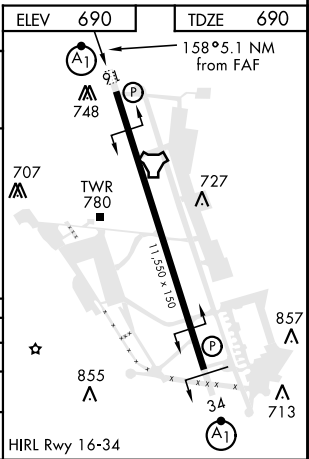
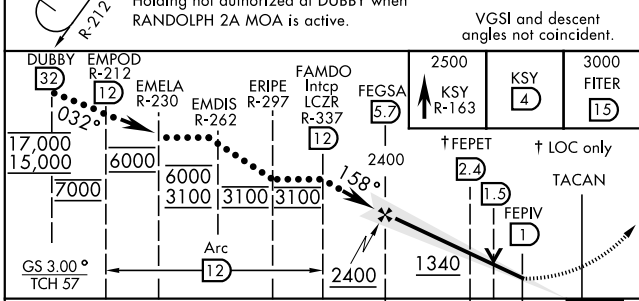
ATIS 120.45 273.5	SAN ANTONIO APP CON 118.05 353.5	KELLY TOWER 124.3 322.35	GND CON 121.8 289.4
-----------------------------	--------------------------------------------	------------------------------------	-------------------------------



Holding not authorized at DUBBY when RANDOLPH 2A MOA is active.

VGSI and descent angles not coincident.

EMERG SAFE ALT 100 NM 4200



CATEGORY	C	D	E
S-ILS 16 *	890/24	200	(200-½)
S-LOC/ DME 16 **	1100/40	410	(500-¾)
CIRCLING ***	1360-1¾ 670 (700-1¾)	1440-2½ 750 (800-2½)	1900-3 1210 (1300-3)

HI-ILS or LOC/DME Z RWY 16

SC-3, 19 MAY 2022 to 16 JUN 2022

SC-3, 19 MAY 2022 to 16 JUN 2022