

# HI-ILS or LOC/DME Z RWY 34

LOC I-OSQ <b>110.7</b>	APCH CRS <b>338°</b>	Rwy Ldg <b>11,550</b> TDZE <b>660</b> Arprt Elev <b>690</b>
---------------------------	-------------------------	--

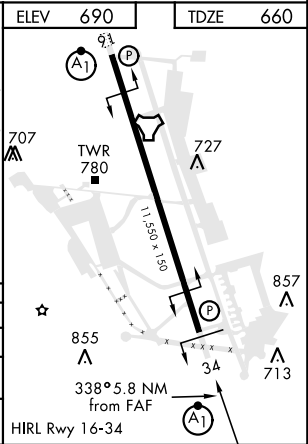
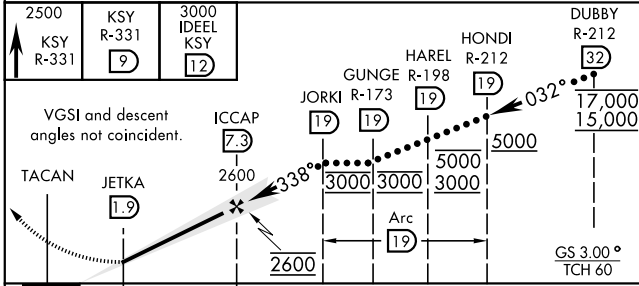
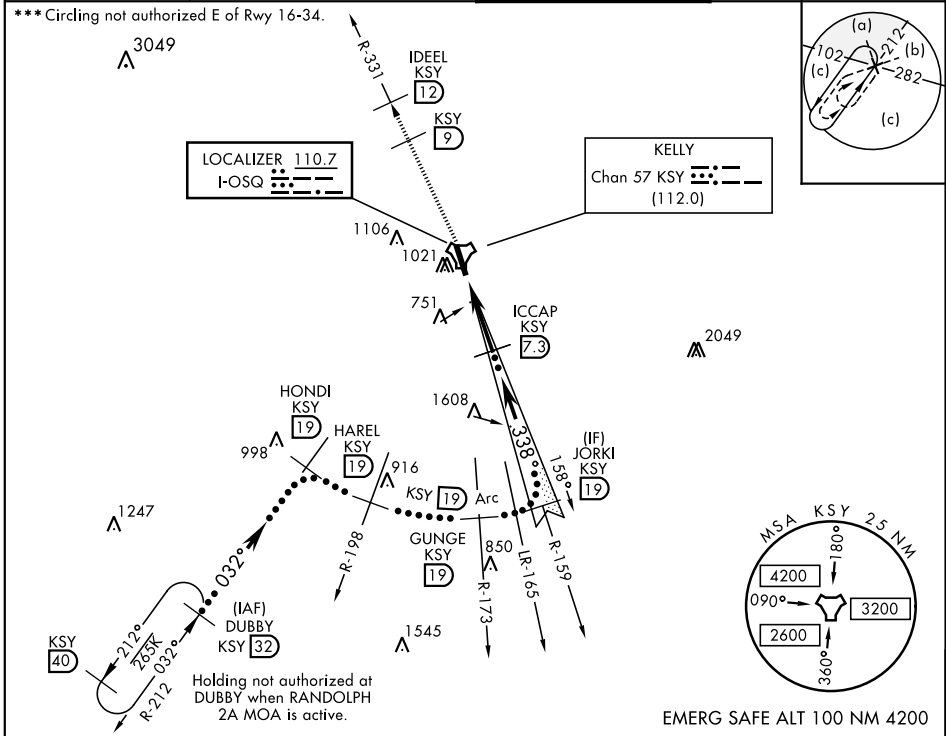
JAL-371 [USAF]

KELLY FLD (KSKF)

**▽** \* When ALS inop, increase RVR to 40 and vis to ¼ mile.  
 \*\* When ALS inop, increase RVR to 55 and vis to 1 mile.

ALSF-1 **(A1)**  
 MISSED APPROACH: Climbing to 2500 via KSY TACAN R-331 until 9 DME, cross 9 DME at 2500, then continue climb to 3000 to IDEEL/12.0 DME. Expect ATC instructions.

ATIS <b>120.45 273.5</b>	SAN ANTONIO APP CON <b>118.05 353.5</b>	KELLY TOWER <b>124.3 322.35</b>	GND CON <b>121.8 289.4</b>
-----------------------------	--	------------------------------------	-------------------------------



CATEGORY	C	D	E
S-ILS 34*	860/24	200	(200-½)
S-LOC/DME 34**	1040/35	380	(400-¾)
CIRCLING***	1360-1¾ 670 (700-1¾)	1440-2½ 750 (800-2½)	1900-3 (1300-3)

# HI-ILS or LOC/DME Z RWY 34

SC-3, 19 MAY 2022 to 16 JUN 2022

SC-3, 19 MAY 2022 to 16 JUN 2022