

HI-TACAN Z RWY 16

TACAN KSY Chan 57	APCH CRS 151°	Rwy ldg 11,550 TDZE 690 Arprt Elev 690
----------------------	------------------	--

JAL-371 [USAF]

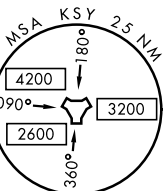
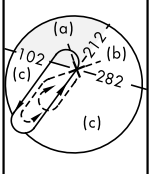
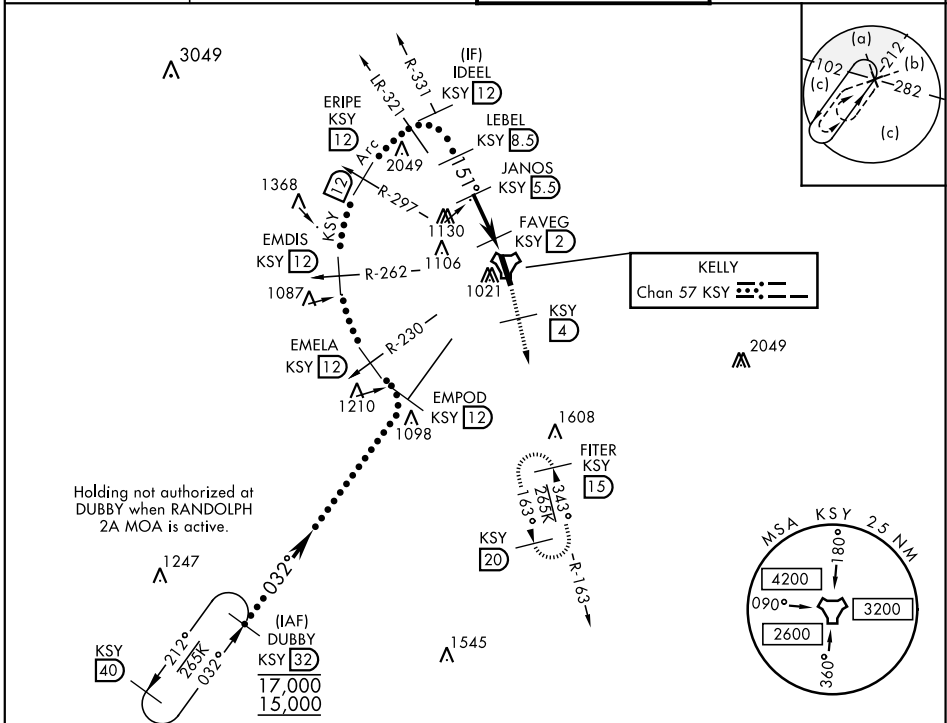
KELLY FLD (KSKF)

▼ * When ALS inop, increase RVR to 60 and vis to 1½ miles.
 ** Circling not authorized E of Rwy 16-34.



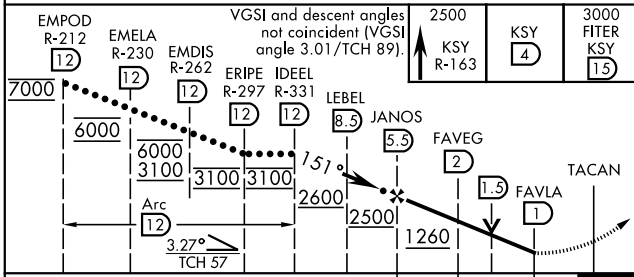
MISSED APPROACH: Climb to 2500 via KSY TACAN R-163 until 4 DME, then continue climb to 3000 to FITER/15 DME and hold.

ATIS 120.45 273.5	SAN ANTONIO APP CON 118.05 353.5	KELLY TOWER 124.3 322.35	GND CON 121.8 289.4
-----------------------------	--	------------------------------------	-------------------------------

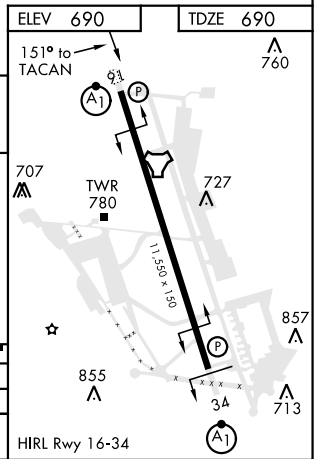


Holding not authorized at DUBBY when RANDOLPH 2A MOA is active.

EMERG SAFE ALT 100 NM 4200



EMPOD R-212	EMELAS R-230	EMDIS R-262	ERIPLE R-297	IDEEL R-331	LEBEL R-331	JANOS R-331	FAVEG R-331	FAVLA R-331	TACAN								
12	12	12	12	12	8.5	5.5	2	1.5	1								
7000	6000	3100	3100	3100	2600	2500	1260										
<table border="1"> <tr> <td>2500</td> <td>KSY 4</td> <td>3000</td> <td>FITER KSY 15</td> </tr> <tr> <td>KSY R-163</td> <td></td> <td></td> <td></td> </tr> </table>										2500	KSY 4	3000	FITER KSY 15	KSY R-163			
2500	KSY 4	3000	FITER KSY 15														
KSY R-163																	
CATEGORY	C	D	E														
S-16*	1100/40	410	(500-34)														
CIRCLING**	1360-134 670 (700-134)	1440-212 750 (800-212)	1900-3 1210 (1300-3)														



HI-TACAN Z RWY 16

SC-3, 19 MAY 2022 to 16 JUN 2022

SC-3, 19 MAY 2022 to 16 JUN 2022