

ILS or LOC/DME Y RWY 16

LOC I-SKF 110.1	APCH CRS 158°	Rwy Ldg 11,550 TDZE 690 Arprt Elev 690
---------------------------	-------------------------	---

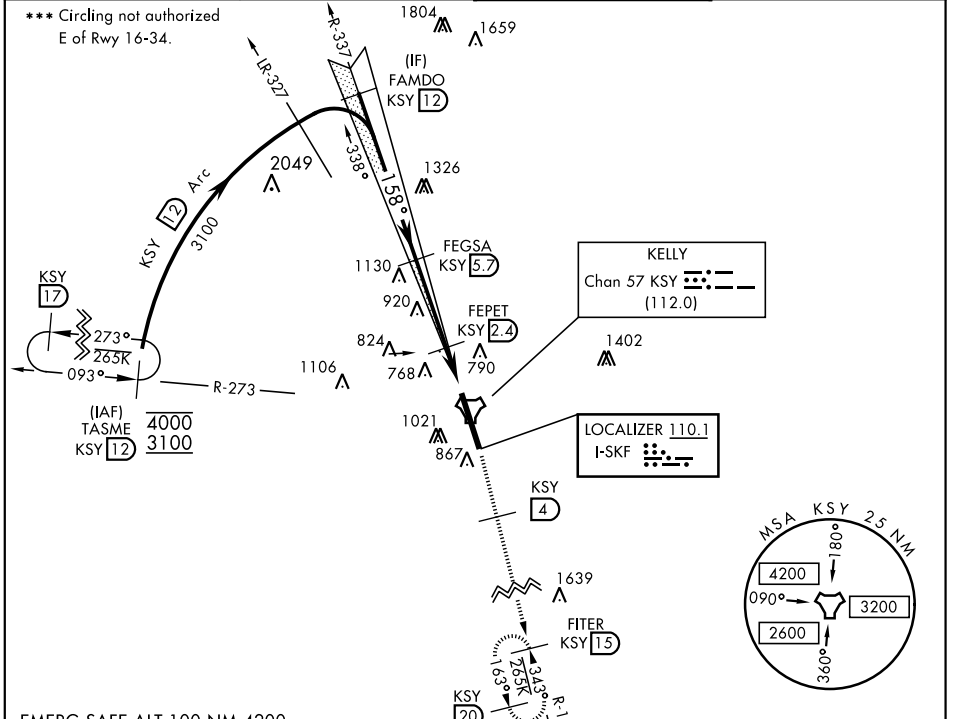
AL-371 [USAF]

KELLY FLD (KSKF)

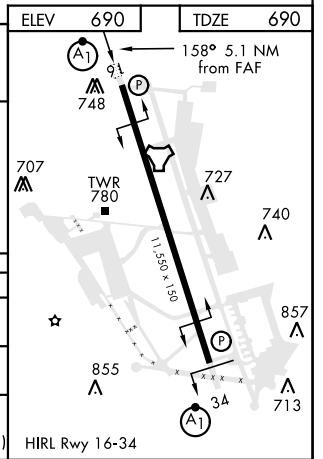
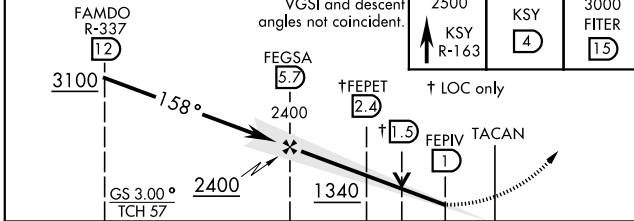
▼ *When ALS inop, increase RVR to 40 and vis to $\frac{3}{8}$ mile.
*** When ALS inop, increase CAT AB RVR to 55 and vis to 1 mile, CAT CDE RVR to 60 and vis to $1\frac{1}{8}$ miles.

ALSF-1 MISSED APPROACH: Climb to 2500 via KSY R-163 until 4 DME, then continue climb to 3000 to FITER/15 DME and hold. Non-TACAN equipped aircraft expect alternate missed approach instructions.

ATIS 120.45 273.5	SAN ANTONIO APP CON 118.05 353.5	KELLY TOWER 124.3 322.35	GND CON 121.8 289.4
-----------------------------	--	------------------------------------	-------------------------------



EMERG SAFE ALT 100 NM 4200



CATEGORY	A	B	C	D	E
S-ILS 16*	890/24		200	(200- $\frac{1}{2}$)	
S-LOC/DME 16**	1100/24	410 (500- $\frac{1}{2}$)	1100/40	410	(500- $\frac{3}{4}$)
C CIRCLING ***	1220-1	1300-1	1360-1 $\frac{3}{4}$	1440-2 $\frac{1}{2}$	1900-3
	530 (600-1)	610 (700-1)	670 (700-1 $\frac{3}{4}$)	750 (800-2 $\frac{1}{2}$)	1210 (1300-3)

ILS or LOC/DME Y RWY 16

SC-3, 19 MAY 2022 to 16 JUN 2022

SC-3, 19 MAY 2022 to 16 JUN 2022