

# ILS or LOC/DME Y RWY 34

LOC I-OSQ <b>110.7</b>	APCH CRS <b>338°</b>	Rwy Ldg <b>11,550</b> TDZE <b>660</b> Arprt Elev <b>690</b>
---------------------------	-------------------------	--

AL-371 [USAF]

KELLY FLD (KSKF)

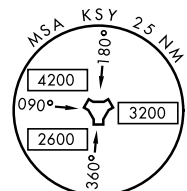
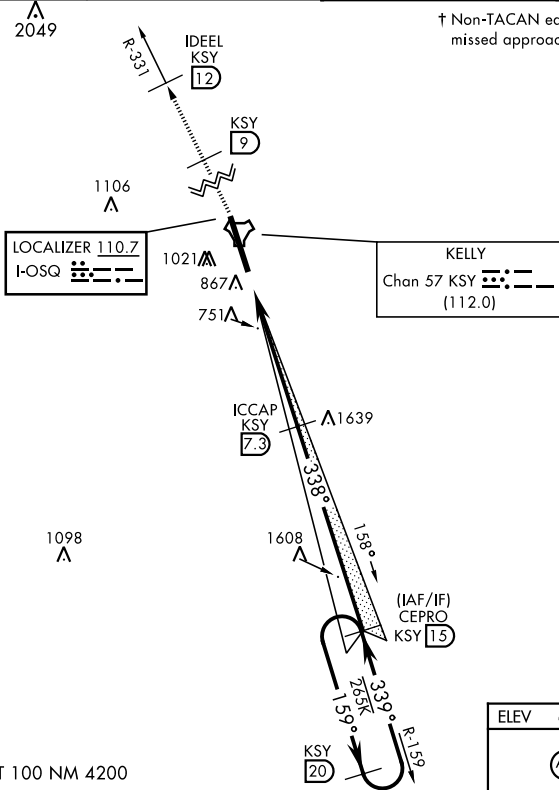
▼ \* When ALS inop, increase RVR to 40 and vis to ¼ mile.  
 \*\* When ALS inop, increase RVR to 55 and vis to 1 mile.  
 \*\*\* Circling not authorized E of Rwy 16-34.

ALSF-1  
A1

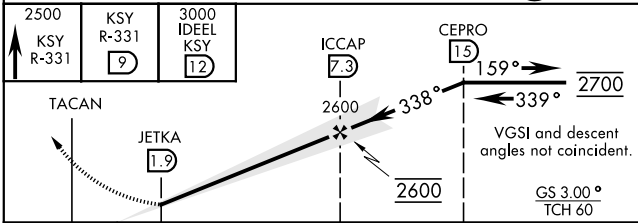
† MISSED APPROACH: Climb to 2500 via KSY  
 TACAN R-331 until 9 DME, cross 9 DME at 2500,  
 then continue climb to 3000 to IDEEL/12 DME.  
 Expect ATC instructions.

ATIS <b>120.45 273.5</b>	SAN ANTONIO APP CON <b>118.05 353.5</b>	KELLY TOWER <b>124.3 322.35</b>	GND CON <b>121.8 289.4</b>
-----------------------------	--	------------------------------------	-------------------------------

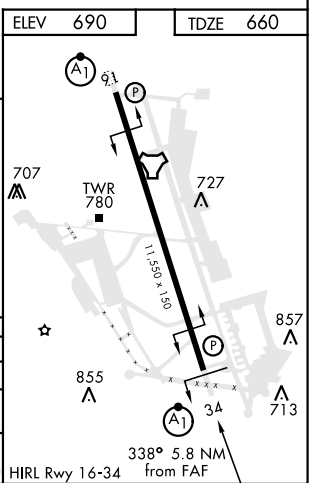
† Non-TACAN equipped aircraft expect alternate missed approach instructions.



EMERG SAFE ALT 100 NM 4200



CATEGORY	A	B	C	D	E
S-ILS 34*	860/24		200	(200-½)	
S-LOC/DME 34**	1040/24	380 (400-½)	1040/35	380	(400-¾)
*** CIRCLING	1220-1	1300-1	1360-1¾	1440-2½	1900-3
	530 (600-1)	610 (700-1)	670 (700-1¾)	750 (800-2½)	1210 (1300-3)



# ILS or LOC/DME Y RWY 34

SC-3, 19 MAY 2022 to 16 JUN 2022

SC-3, 19 MAY 2022 to 16 JUN 2022