

SAN ANTONIO, TEXAS

# RNAV (GPS) RWY 16

APCH CRS	Rwy Idg	11,550
158°	TDZE	690
	Arprt Elev	690

AL-371 (USAF)

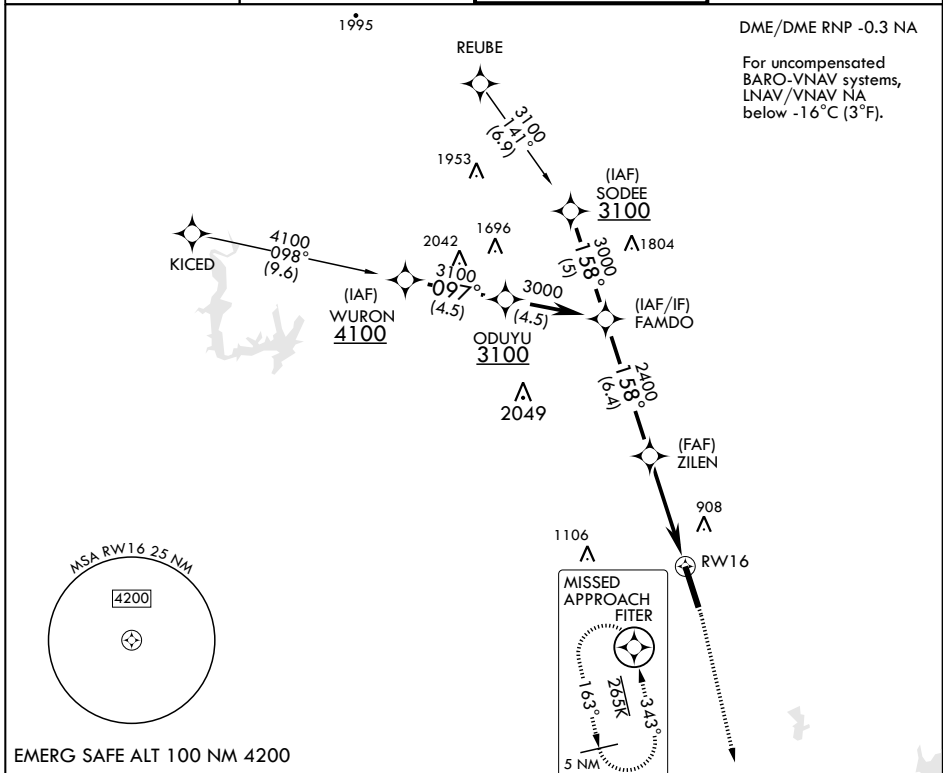
KELLY FIELD (KSKF)

\* When ALS inop, increase all CAT vis to 1 3/4 miles.  
 \*\* When ALS inop, increase CAT AB RVR to 55, and vis to 1 mile; CAT CDE vis to 1 5/8 miles.  
 \*\*\* Circling not authorized E of Rwy 16-34.



**MISSED APPROACH:** Climb to 1500 then climbing right turn to 3000 direct FITER and hold.

ATIS 120.45 273.5	SAN ANTONIO APP CON 118.05 353.5	KELLY TOWER 124.3 322.35	GND CON 121.8 289.4
----------------------	-------------------------------------	-----------------------------	------------------------



SC-3, 19 MAY 2022 to 16 JUN 2022

SC-3, 19 MAY 2022 to 16 JUN 2022

EMERG SAFE ALT 100 NM 4200

FAMDO	VGS1 and descent angles not coincident.	1500	3000	FITER	ELEV 690	TDZE 690
3000		↑	↶		158° to RWY 16	
		†NNAV only				
			↑1.5 NM to RWY 16			
			5.1 NM			
CATEGORY	A	B	C	D	E	
LNAV/VNAV DA*	1080/35		390		(400-%)	
LNAV MDA**	1260/24	570 (600-1/2)	1260-1/4	570	(600-1/4)	
<b>C</b> CIRCLING***	1260-1 570 (600-1)	1300-1 610 (700-1)	1360-1 3/4 670 (700-1 3/4)	1440-2 1/2 750 (800-2 1/2)	1900-3 1210 (1300-3)	

SAN ANTONIO, TEXAS  
Amdt 1 10OCT19

29°23'N - 98°35'W

KELLY FIELD (KSKF)

# RNAV (GPS) RWY 16