

TACAN Y RWY 34

TACAN KSY Chan 57	APCH CRS 343°	Rwy ldg 11,550 TDZE 660 Arprt Elev 690
----------------------	------------------	--

AL-371 [USAF]

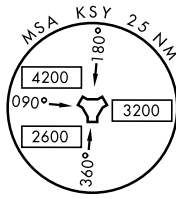
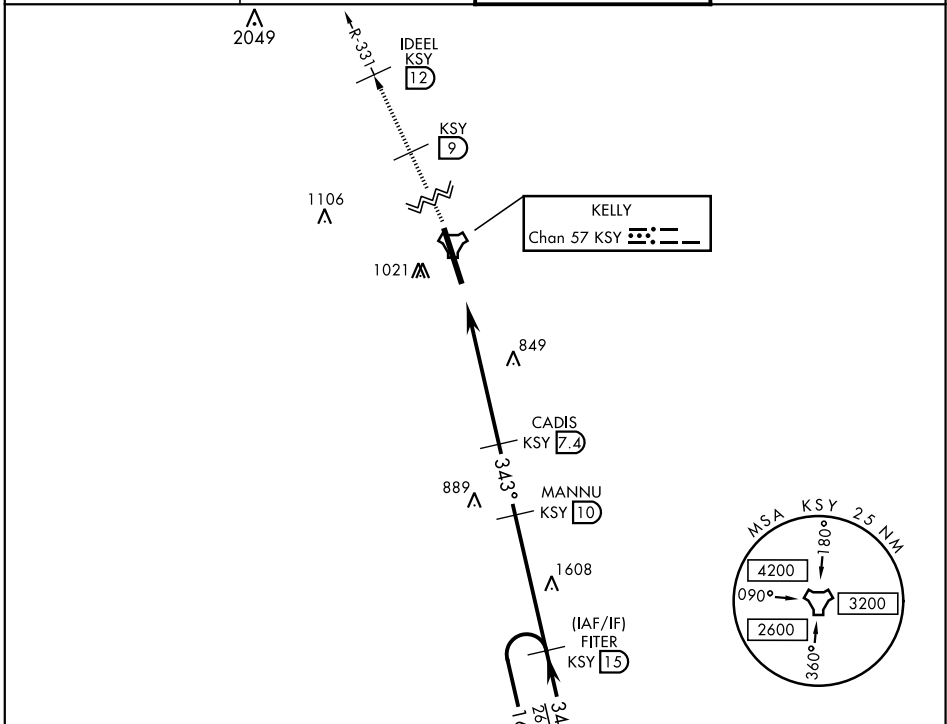
KELLY FLD (KSKF)

▽ * When ALS inop, increase CAT AB RVR to 55 and vis to 1 mile, CAT CDE vis to 1 3/8 miles.
 ** Circling not authorized E of Rwy 16-34.

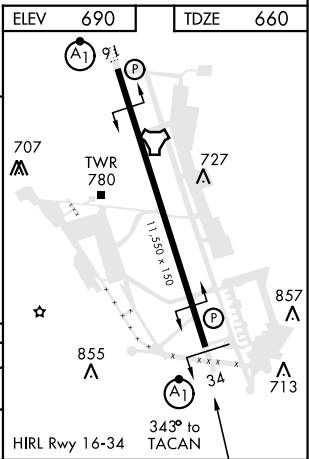
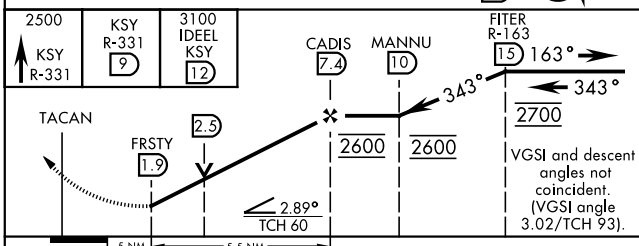


MISSED APPROACH: Climb to 2500 via KSY TACAN R-331 until 9 DME, cross 9 DME at 2500, then continue climb to 3100 to IDEEL/12 DME. Expect ATC instructions.

ATIS 120.45 273.5	SAN ANTONIO APP CON 118.05 353.5	KELLY TOWER 124.3 322.35	GND CON 121.8 289.4
-----------------------------	--	------------------------------------	-------------------------------



EMERG SAFE ALT 100 NM 4200



CATEGORY	A	B	C	D	E
S-34 *	1120/24	460 (500-1/2)	1120/45	460	(500-7/8)
CIRCLING **	1220-1 530 (600-1)	1300-1 610 (700-1)	1360-1 3/4 670 (700-1 3/4)	1440-2 1/2 750 (800-2 1/2)	1900-3 1210 (1300-3)

TACAN Y RWY 34

SC-3, 19 MAY 2022 to 16 JUN 2022

SC-3, 19 MAY 2022 to 16 JUN 2022