

# ALAMO THREE DEPARTURE

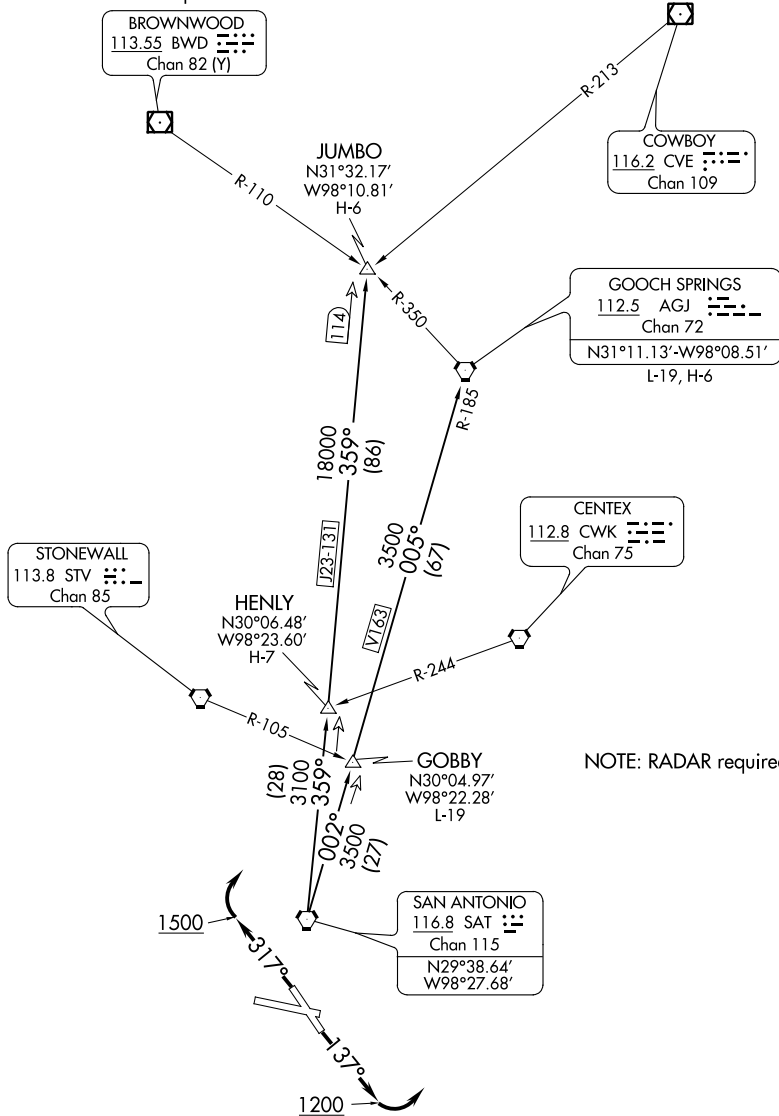
### TAKEOFF MINIMUMS:

Rwy 14, 32: Standard.

Rwy 9: Standard with minimum climb of 225' per NM to 1900.

Rwy 27: 300-1<sup>3</sup>/<sub>4</sub> or standard with minimum climb of 221' per NM to 900, or alternatively, with standard takeoff minimums and a normal 200' per NM climb gradient, takeoff must occur no later than 1700' prior to DER.

ATIS 128.8  
CLNC DEL (When twr closed) 121.7  
GND CON 121.7 379.9  
SAN ANTONIO DEP CON 125.7 290.225  
STINSON TOWER\* 118.2 379.9



(NARRATIVE ON FOLLOWING PAGE)

NOTE: Chart not to scale

# ALAMO THREE DEPARTURE

SC-3, 19 MAY 2022 to 16 JUN 2022

SC-3, 19 MAY 2022 to 16 JUN 2022