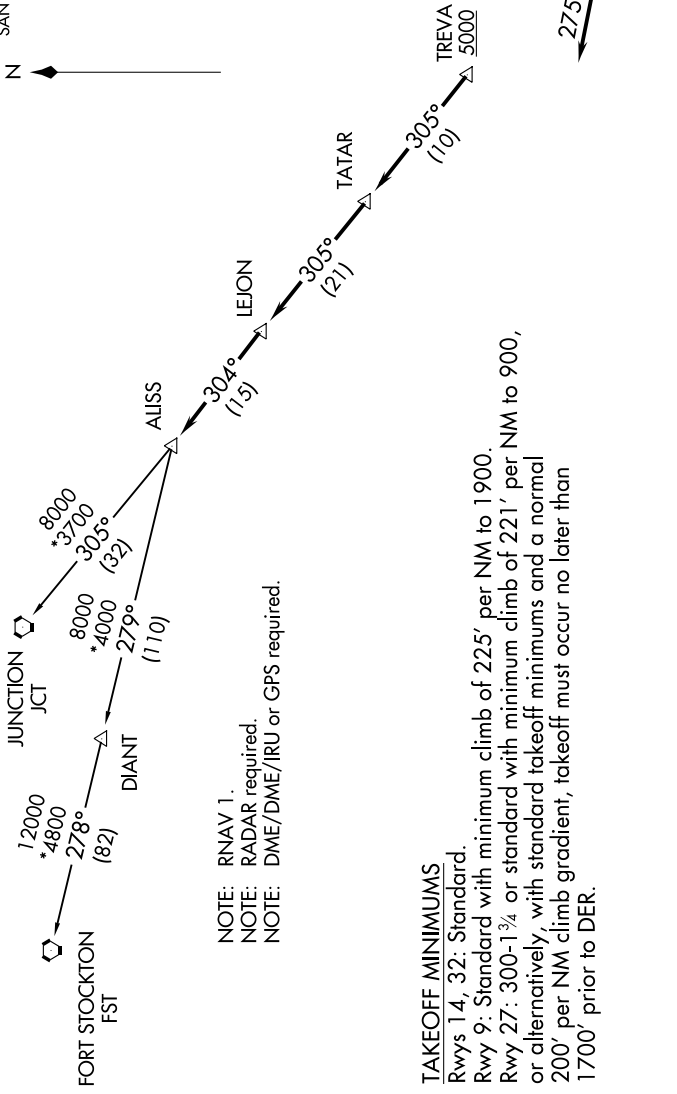


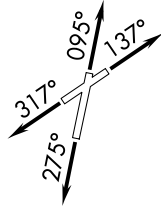
ALISS FIVE DEPARTURE (RNAV)

ALISS
 128.8
 CLNC DEL (When twr closed)
 121.7
 GND CON
 121.7 379.9
 SAN ANTONIO DEP CON
 125.7 290.225
 STINSON TOWER*
 118.2 379.9



NOTE: RNAV 1.
 NOTE: RADAR required.
 NOTE: DME/DME/IRU or GPS required.

TAKEOFF MINIMUMS
 Rwy 14, 32: Standard.
 Rwy 9: Standard with minimum climb of 225' per NM to 1900.
 Rwy 27: 300-1 3/4 or standard with minimum climb of 221' per NM to 900, or alternatively, with standard takeoff minimums and a normal 200' per NM climb gradient, takeoff must occur no later than 1700' prior to DER.



NOTE: Chart not to scale.

(NARRATIVE ON FOLLOWING PAGE)

SC-3, 19 MAY 2022 to 16 JUN 2022

SC-3, 19 MAY 2022 to 16 JUN 2022