

(MILET4.MILET) 21280

AL-372 (FAA)

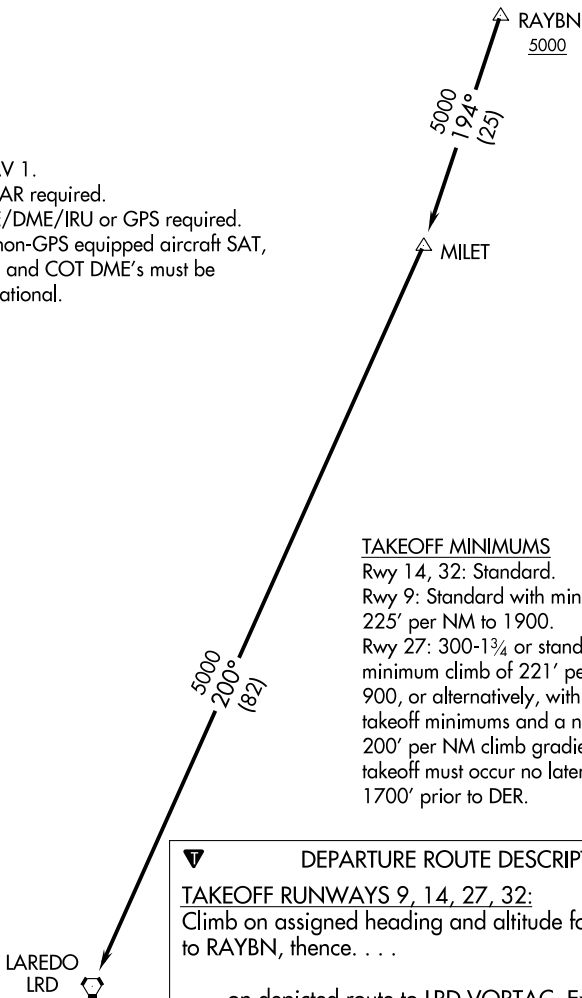
STINSON MUNI (SSF)
SAN ANTONIO, TEXAS

MILET FOUR DEPARTURE (RNAV)

ATIS
128.8
CLNC DEL (When twr closed)
121.7
GND CON
121.7 379.9
SAN ANTONIO DEP CON
125.7 290.225
STINSON TOWER ★
118.2 379.9



- NOTE: RNAV 1.
- NOTE: RADAR required.
- NOTE: DME/DME/IRU or GPS required.
- NOTE: For non-GPS equipped aircraft SAT, THX, and COT DME's must be operational.



TAKEOFF MINIMUMS

Rwy 14, 32: Standard.
 Rwy 9: Standard with minimum climb of 225' per NM to 1900.
 Rwy 27: 300-1¼ or standard with a minimum climb of 221' per NM to 900, or alternatively, with standard takeoff minimums and a normal 200' per NM climb gradient, takeoff must occur no later than 1700' prior to DER.



DEPARTURE ROUTE DESCRIPTION

TAKEOFF RUNWAYS 9, 14, 27, 32:

Climb on assigned heading and altitude for RADAR vectors to RAYBN, thenence. . . .

. . . . on depicted route to LRD VORTAC. Expect filed altitude 10 minutes after departure.

NOTE: Chart not to scale.

SC-3, 19 MAY 2022 to 16 JUN 2022

SC-3, 19 MAY 2022 to 16 JUN 2022

MILET FOUR DEPARTURE (RNAV)

(MILET4.MILET) 02MAR17

SAN ANTONIO, TEXAS
STINSON MUNI (SSF)