

LOC/DME I-FLZ <b>111.7</b> Chan <b>54</b>	APP CRS <b>221°</b>	Rwy Ldg TDZE <b>1957</b> Apt Elev <b>1957</b>	<b>4499</b>
---	------------------------	---	-------------

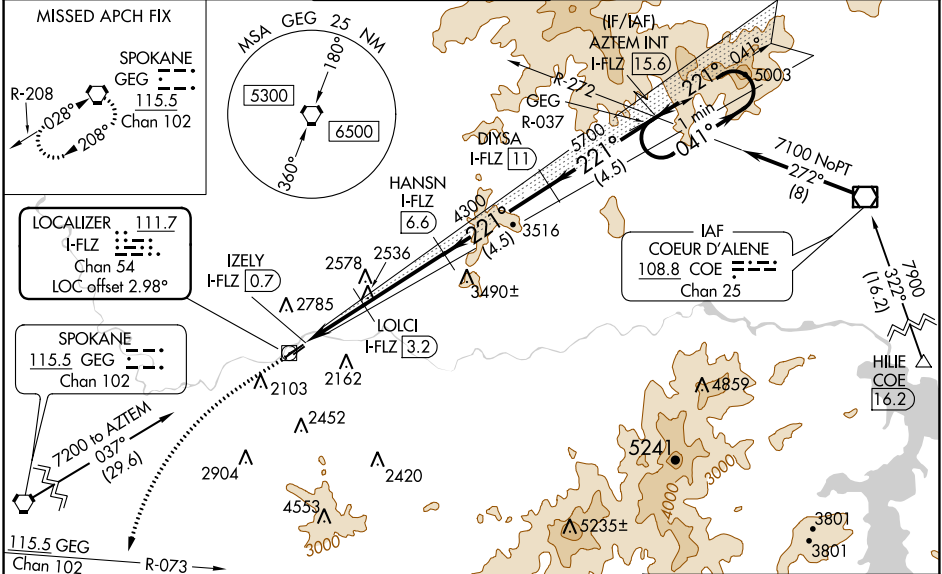
# ILS or LOC RWY 22R

FELTS FLD (S/F/F)

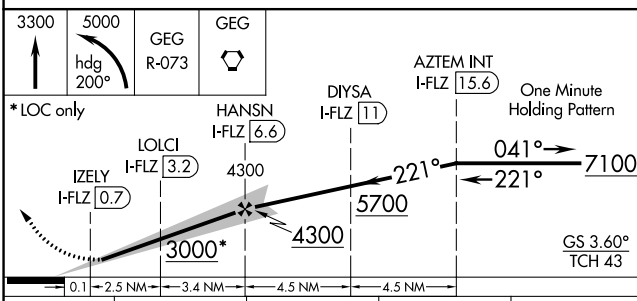
**⚠** Inop table does not apply to S-ILS all Cats. Circling NA northwest of Rwy 4L-22R. DME required. Helicopter visibility reduction below 3/4 SM NA. When local altimeter setting not received, use Spokane Intl altimeter setting **⚡** -16°C and increase all DA 82 feet and all MDA 100 feet; and increase S-LOC Cat C visibility 1/8 and Circling Cat C visibility 1/4. For inop MALSRL, increase S-LOC Cat A visibility to 1 and Cat C visibility to 1/2.

**MALSRL**  
**⚠** MISSED APPROACH: Climb to 3300 then climbing left turn to 5000 on heading 200° and on GEG VORTAC R-073 to GEG VORTAC and hold.

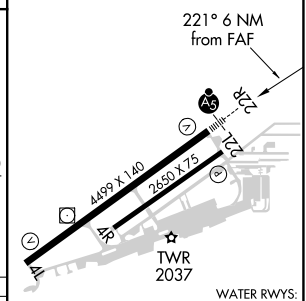
ATIS <b>120.55</b>	SPOKANE APP CON <b>133.35 263.0</b>	FELTS TOWER ★ <b>132.5 (CTAF) 239.025</b>	GND CON <b>121.7</b>	CLNC DEL <b>121.7</b>	UNICOM <b>122.95</b>
-----------------------	--	--	-------------------------	--------------------------	-------------------------



LOCALIZER <b>111.7</b> I-FLZ Chan 54 LOC offset 2.98°	SPOKANE <b>115.5</b> GEG Chan 102
--	--------------------------------------



ELEV 1957	TDZE 1957
-----------	-----------



CATEGORY	A	B	C	D
S-ILS 22R	2227-3/4	270 (300-3/4)	2227-17/8 270 (300-17/8)	NA
S-LOC 22R	2800-3/4	843 (900-3/4)	2800-17/8 843 (900-17/8)	NA
<b>C</b> CIRCLING	2800-1 1/4 843 (900-1 1/4)	2800-1 1/2 843 (900-1 1/2)	3020-3 1063 (1100-3)	NA

WATER RWYS:  
03W-21W 6000 X 100

REIL Rwy 4L **Ⓛ**  
MIRL Rwy 4L-22R **Ⓛ**

NW-1, 19 MAY 2022 to 16 JUN 2022

NW-1, 19 MAY 2022 to 16 JUN 2022