

WAAS CH 65931 W04A	APP CRS 038°	Rwy Idg TDZE Apt Elev	4499 1949 1957
--	------------------------	-----------------------------	---

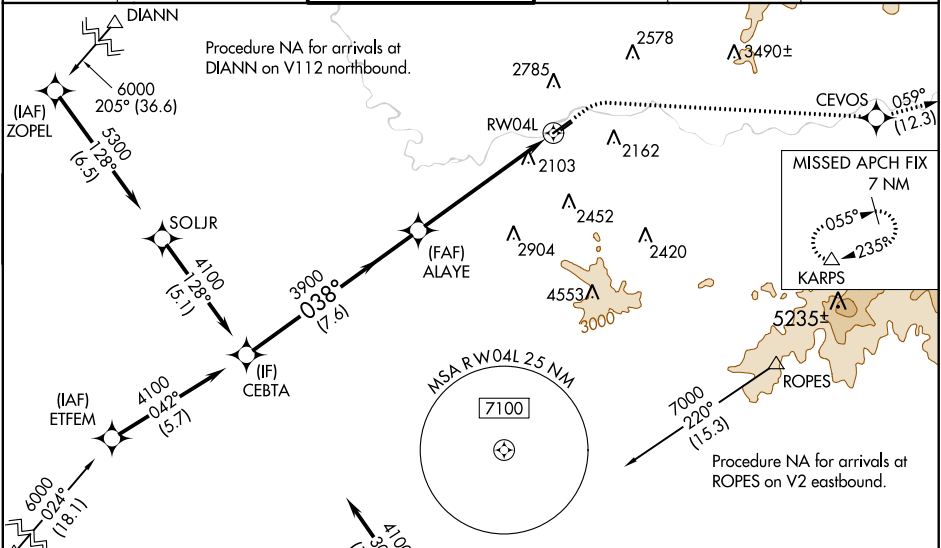
RNAV (GPS) RWY 4L

FELTS FLD (S'F'F)

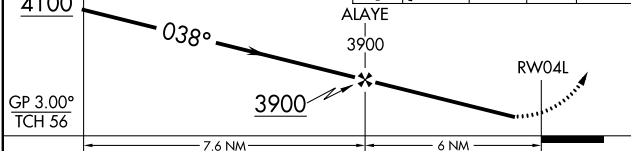
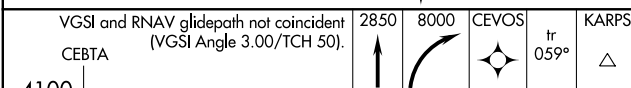
⚠ Baro-VNAV NA when using Spokane Intl altimeter setting. For uncompensated Baro-VNAV systems, LNAV/VNAV NA below -18°C (-1°F) or above 54°C (130°F). Circling NA northwest of Rwy 4L-22R. DME/DME RNP-0.3 NA. When local altimeter setting not received, use Spokane Intl altimeter setting and increase all DA 82 feet and all MDA 100 feet. Increase LPV all Cats, LNAV/VNAV all Cats, LNAV Cat C and Circling Cat C visibility ½ mile; increase LNAV Cat A/B/D and Circling Cat B/D visibility ¼ mile. Helicopter visibility reduction below ¼ SM NA. * LPV missed approach requires a minimum climb of 330 feet per NM to 5400.

MISSED APPROACH: Climb to 2850 then climbing right turn to 8000 direct CEVOS and on track 059° to KARPS INT and hold, continue climb-in-hold to 8000.

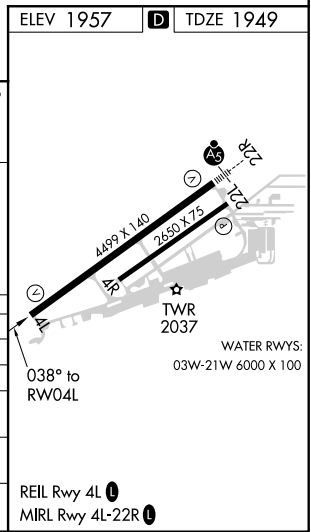
ATIS 120.55	SPOKANE APP CON 133.35 263.0	FELTS TOWER * 132.5 (CTAF) 239.025	GND CON 121.7	CLNC DEL 121.7	UNICOM 122.95
-----------------------	--	---	-------------------------	--------------------------	-------------------------



GRAPH	(IAF) ETDEM	4100 042° (5.7)	(IF) CEVTA	4100 128° (5.1)	SOLJR	5300 128° (6.5)	ZOPFL	6000 205° (36.6)	DIANN
-------	-------------	-----------------------	------------	-----------------------	-------	-----------------------	-------	------------------------	-------



CATEGORY	A	B	C	D
LPV DA*		2199-1	250 (300-1)	
LPV DA		2529-2	580 (600-2)	
LNAV/VNAV DA		2779-3	830 (900-3)	
LNAV MDA	2820-1 871 (900-1)	2820-1¼ 871 (900-1¼)	2820-2½ 871 (900-2½)	871 (900-2½)
CIRCLING	2820-1¼	863 (900-1¼)	3020-3 1063 (1100-3)	3360-3 1403 (1500-3)



NW-1, 19 MAY 2022 to 16 JUN 2022

NW-1, 19 MAY 2022 to 16 JUN 2022