


LOC/DME I-TTL 110.55 Chan 42 (Y)	APP CRS 360°	Rwy Idg TDZE 224 Apt Elev 224	6015
---	------------------------	---	-------------

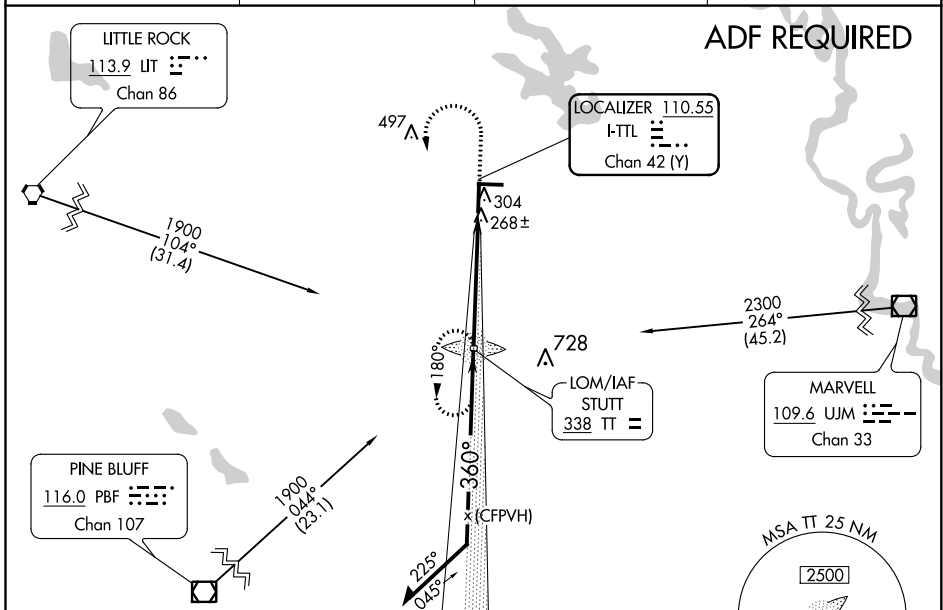
ILS or LOC RWY 36
STUTTGART MUNI CARL HUMPHREY FLD (SGT)

⚠ When local altimeter setting not received, use Bill and Hillary Clinton Nil/Adams Fld altimeter setting; increase DA to 524 feet; increase all MDAs 100 feet and visibility Cats C and D ¼ SM. VDP NA with Bill and Hillary Clinton Nil/Adams Fld altimeter setting. For inop MALSF when using Bill and Hillary Clinton Nil/Adams Fld altimeter setting, increase ILS all Cats visibility to 1 mile.

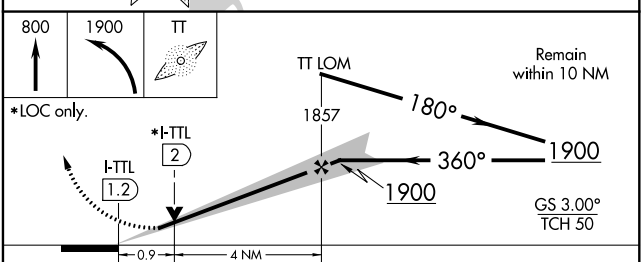
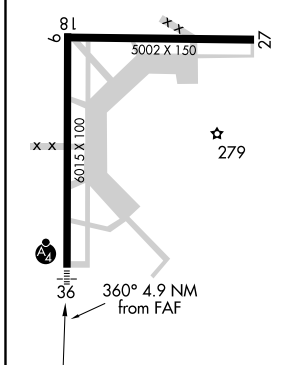
MALSF 

MISSED APPROACH: Climb to 800, then climbing left turn to 1900 direct TT LOM and hold.

AWOS-3PT 119.025	LITTLE ROCK APP CON 135.4 353.6	CLNC DEL 123.7	UNICOM 122.8 (CTAF) 0
----------------------------	---	--------------------------	--



ELEV 224	TDZE 224
----------	----------



CATEGORY	A	B	C	D
S-ILS 36	424-¾		200 (200-¾)	
S-LOC 36	520-¾		296 (300-¾)	
CIRCLING	660-1 436 (500-1)	680-1 456 (500-1)	760-1½ 536 (600-1½)	860-2 636 (700-2)

Knots	60	90	120	150	180
Min:Sec	4:54	3:16	2:27	1:58	1:38

SC-1, 19 MAY 2022 to 16 JUN 2022

SC-1, 19 MAY 2022 to 16 JUN 2022