

WAAS CH <b>58303</b> <b>W18A</b>	APP CRS <b>180°</b>	Rwy Idg <b>6015</b> TDZE <b>224</b> Apt Elev <b>224</b>
--	------------------------	---

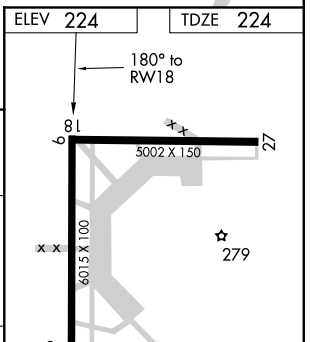
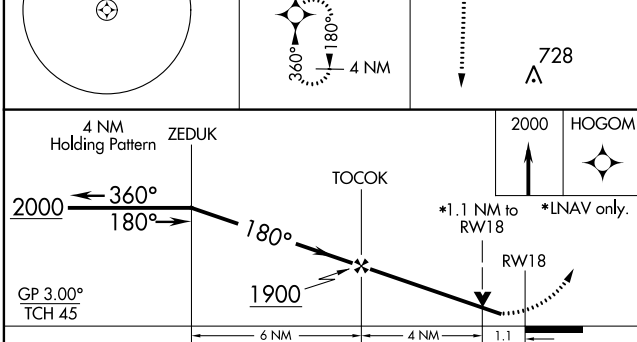
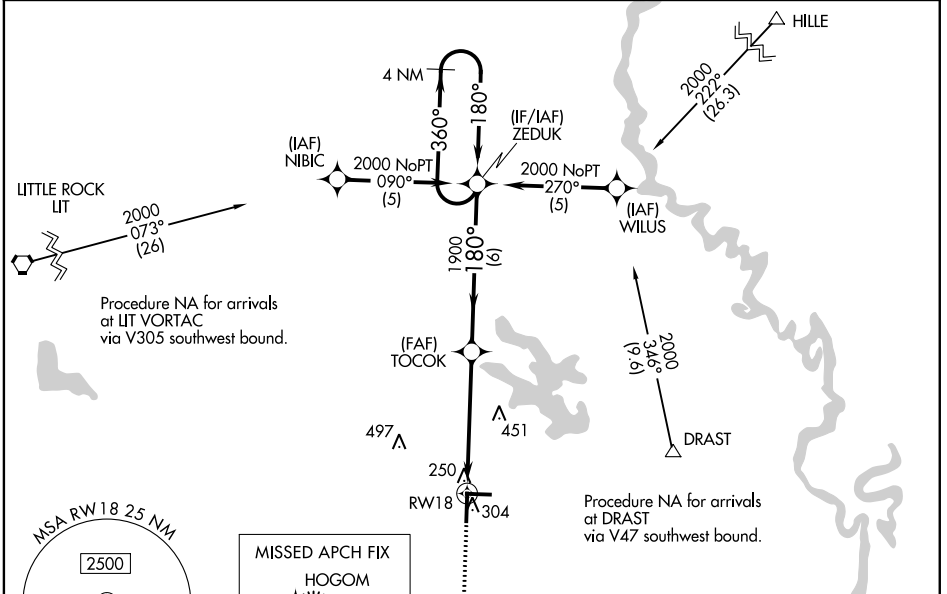
**RNAV (GPS) RWY 18**  
STUTTGART MUNI CARL HUMPHREY FLD (SGT)

**RNP APCH**

▼ For uncompensated Baro-VNAV systems, LNAV/VNAV NA below -15°C (5°F) or above 48°C (118°F).  
 ▲ When local altimeter setting not received, use Bill and Hillary Clinton Nil/Adams Fld altimeter setting; increase LPV DA to 556 feet; increase LNAV/VNAV DA to 602 feet; increase all MDAs 100 feet and visibility Cats C and D ¼ SM. Baro-VNAV NA when using Bill and Hillary Clinton Nil/Adams Fld altimeter setting. VDP NA when using Bill and Hillary Clinton Nil/Adams Fld altimeter setting.

MISSED APPROACH:  
Climb to 2000 direct HOGOM and hold.

AWOS-3PT <b>119.025</b>	LITTLE ROCK APP CON <b>135.4 353.6</b>	CLNC DEL <b>123.7</b>	UNICOM <b>122.8 (CTAF) 0</b>
----------------------------	---	--------------------------	---------------------------------



CATEGORY	A	B	C	D
LPV DA	474-1 250 (300-1)			
LNAV/VNAV DA	520-¾	296 (300-¾)	520-1 296 (300-1)	
LNAV MDA	620-¾	396 (400-¾)	620-1¼ 396 (400-1¼)	
CIRCLING	660-1 436 (500-1)	680-1 456 (500-1)	760-1½ 536 (600-1½)	860-2 636 (700-2)

SC-1, 19 MAY 2022 to 16 JUN 2022

SC-1, 19 MAY 2022 to 16 JUN 2022