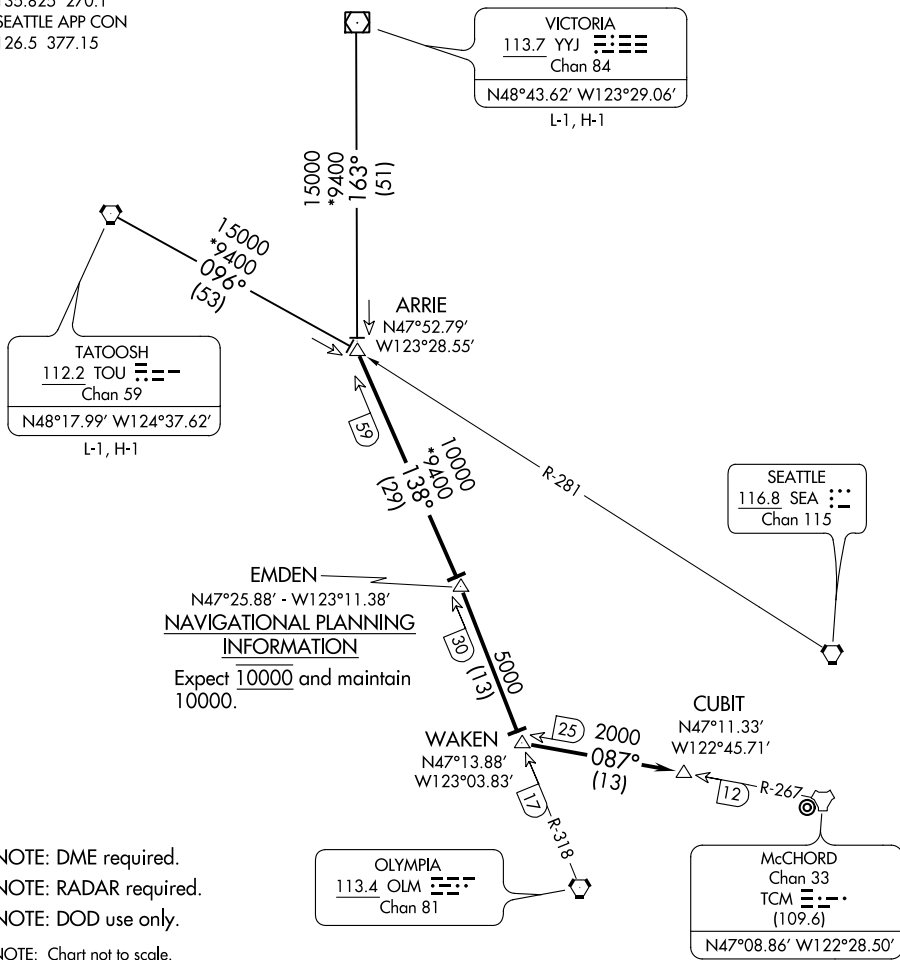


# ARRIE EIGHT ARRIVAL

D-ATIS  
135.825 270.1  
SEATTLE APP CON  
126.5 377.15



**EMDEN**  
N47°25.88' - W123°11.38'  
NAVIGATIONAL PLANNING INFORMATION  
Expect 10000 and maintain 10000.

NOTE: DME required.  
NOTE: RADAR required.  
NOTE: DOD use only.  
NOTE: Chart not to scale.

## ARRIVAL ROUTE DESCRIPTION

TATOOSH TRANSITION (TOU.ARRIE8): From over TOU VORTAC on TOU R-096 to ARRIE. Thence. . .

VICTORIA TRANSITION (YYJ.ARRIE8): From over YYJ VOR/DME on YYJ R-163 to ARRIE. Thence. . .

. . . From over ARRIE on OLM R-318 and TCM R-267 to CUBIT, expect RADAR vectors to final approach course.

LOST COMMUNICATIONS: Proceed direct to TCM TACAN.

NW-1, 19 MAY 2022 to 16 JUN 2022

NW-1, 19 MAY 2022 to 16 JUN 2022