

TACOMA, WASHINGTON

ILS or LOC RWY 34

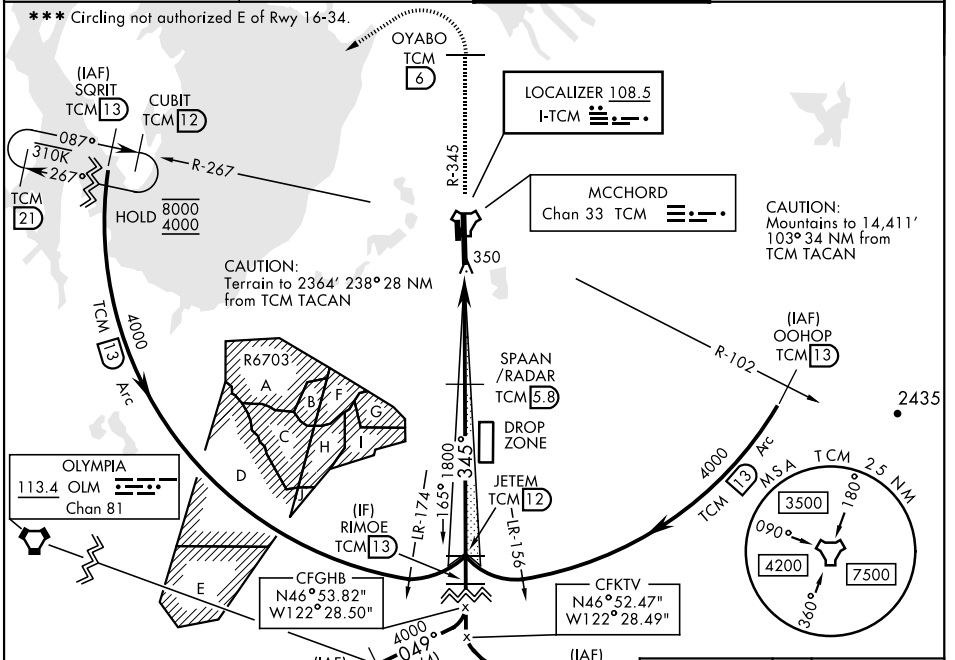
LOC I-TCM 108.5	APCH CRS 345°	Rwy Idg 10,108
		TDZE 322
		Arprt Elev 322

AL-414 [USAF]

MCCHORD FLD (KTCM)

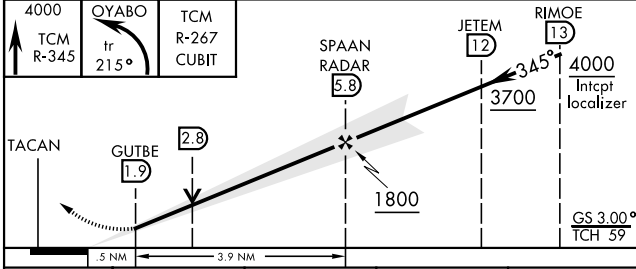
RADAR or DME required.		ALSF-2 	MISSED APPROACH: Climb to 4000 on TCM TACAN R-345 to OYABO, then turn left via 215° course to intercept TCM R-267 to CUBIT and hold, continue climb in hold to 4000. Cross OYABO at or above 3000.
* When ALS inop, increase RVR to 40, vis to 3/4 mile. ** When ALS inop, increase CAT AB RVR to 55, vis to 1 mile, CAT CD vis to 1 1/2 miles.			

ATIS 135.825 270.1	SEATTLE APP CON 126.5 377.15	TOWER 124.8 259.3	GND CON 118.175 279.65
------------------------------	--	-----------------------------	----------------------------------

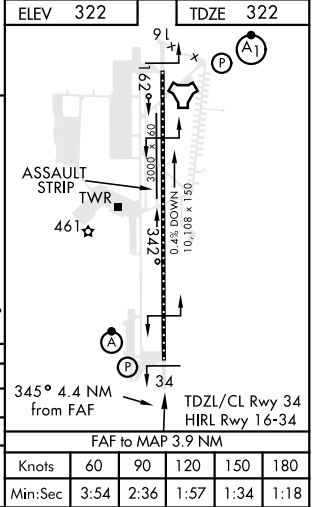


ELEV 322	TDZE 322
----------	----------

EMERG SAFE ALT 100 NM 16,600



CATEGORY	A	B	C	D
S-ILS 34 *	522/18		200 (200-1/2)	
S-LOC 34 **	820/24	498 (500-1/2)	820/50	498 (500-1)
CIRCLING ***	940-1	618 (700-1)	940-1 1/4 618 (700-1 1/4)	940-2 618 (700-2)



TACOMA, WASHINGTON

47°08'N-122°29'W

MCCHORD FLD (KTCM)

Amtd 3 10SEP20

ILS or LOC RWY 34

NW-1, 19 MAY 2022 to 16 JUN 2022

NW-1, 19 MAY 2022 to 16 JUN 2022

FAF to MAP 3.9 NM					
Knots	60	90	120	150	180
Min:Sec	3:54	2:36	1:57	1:34	1:18