

TACAN RWY 16

TACAN TCM Chan 33	APCH CRS 160°	Rwy Idg 10,108 TDZE 286 Arpt Elev 322
--------------------------	----------------------	--

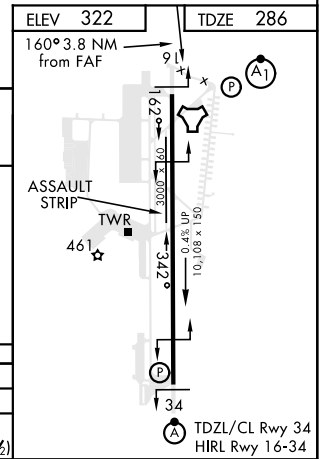
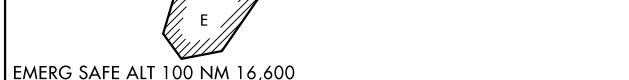
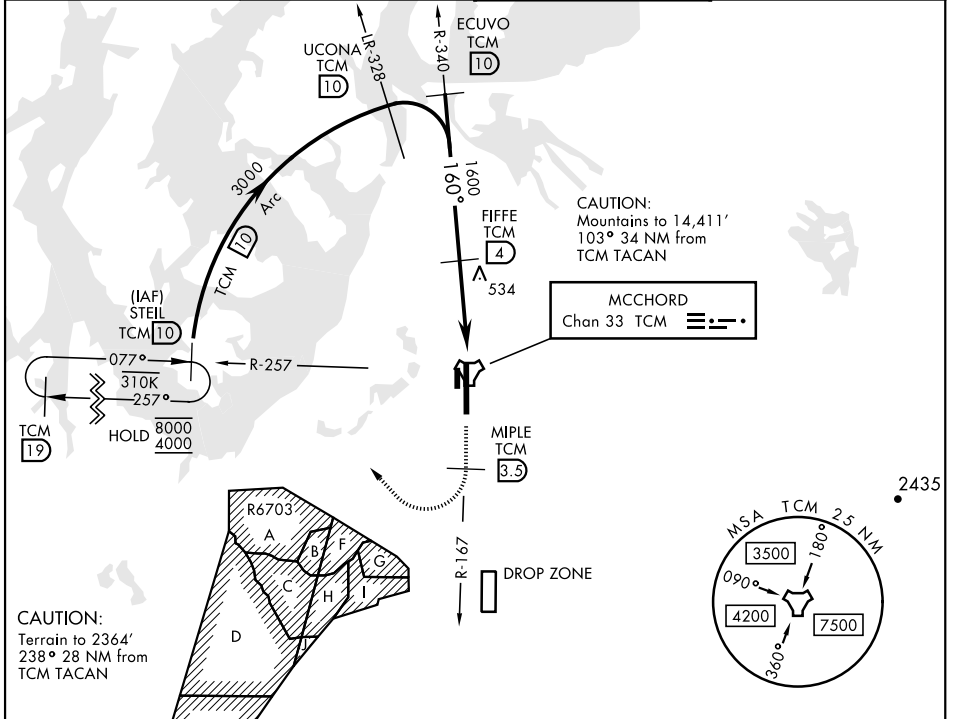
AL-414 [USAF]

MCCHORD FLD (KTCM)

▼ * When ALS inop, increase CAT AB RVR to 55, vis to 1 mile, CAT CDE vis to 1½ miles.
** Circling not authorized E of Rwy 16-34.

ALS-F-1 (A1) MISSED APPROACH: Climb to 4000 on TCM TACAN R-167. At TCM 3.5 DME turn right via 295° course to intercept TCM R-257 to STEIL and hold, continue climb in hold to 4000.

ATIS 135.825 270.1	SEATTLE APP CON 126.5 377.15	TOWER 124.8 259.3	GND CON 118.175 279.65
---------------------------	-------------------------------------	--------------------------	-------------------------------



CATEGORY	A	B	C	D	E
S-16*	800/24	514 (500-½)	800/55	514	(500-1)
CIRCLING**	940-1 618 (700-1)	940-1¾ 618 (700-1¾)	940-2 618 (700-2)	1020-2½ 698 (700-2½)	

TACAN RWY 16

NW-1, 19 MAY 2022 to 16 JUN 2022

NW-1, 19 MAY 2022 to 16 JUN 2022