

WHYTE SEVEN ARRIVAL

NW-1, 19 MAY 2022 to 16 JUN 2022

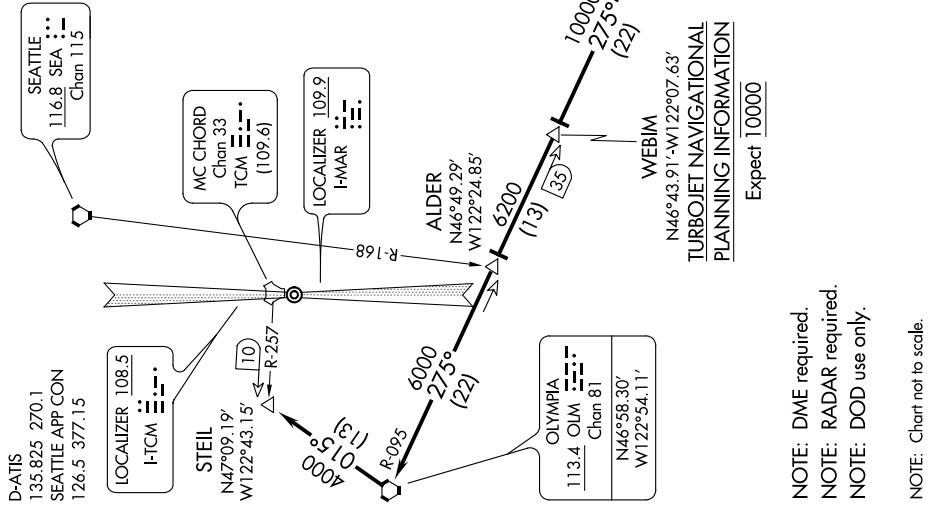
ARRIVAL ROUTE DESCRIPTION

PENDLETON TRANSITION (PDT.WHYTE7): From over PDT VORTAC on PDT R-282 and OLM R-095 to WHYTE. Thence. . . .
YAKIMA TRANSITION (YKM.WHYTE7): From over YKM VORTAC on YKM R-250 to WHYTE. Thence. . . .

. . . From over WHYTE on OLM R-095 to WEBIM, then on OLM R-095 to ALDER. Thence. . . .

RUNWAY 34: Expect ILS or LOC RWY 34 or ILS RWY 34 (CAT III) approach.

RUNWAY 16: On OLM R-095 to OLM VORTAC, then on OLM R-015 to STEIL, expect ILS or LOC Z RWY 16 or TACAN RWY 16 approach.



NOTE: DME required.
NOTE: RADAR required.
NOTE: DOD use only.

NOTE: Chart not to scale.

WHYTE SEVEN ARRIVAL

NW-1, 19 MAY 2022 to 16 JUN 2022