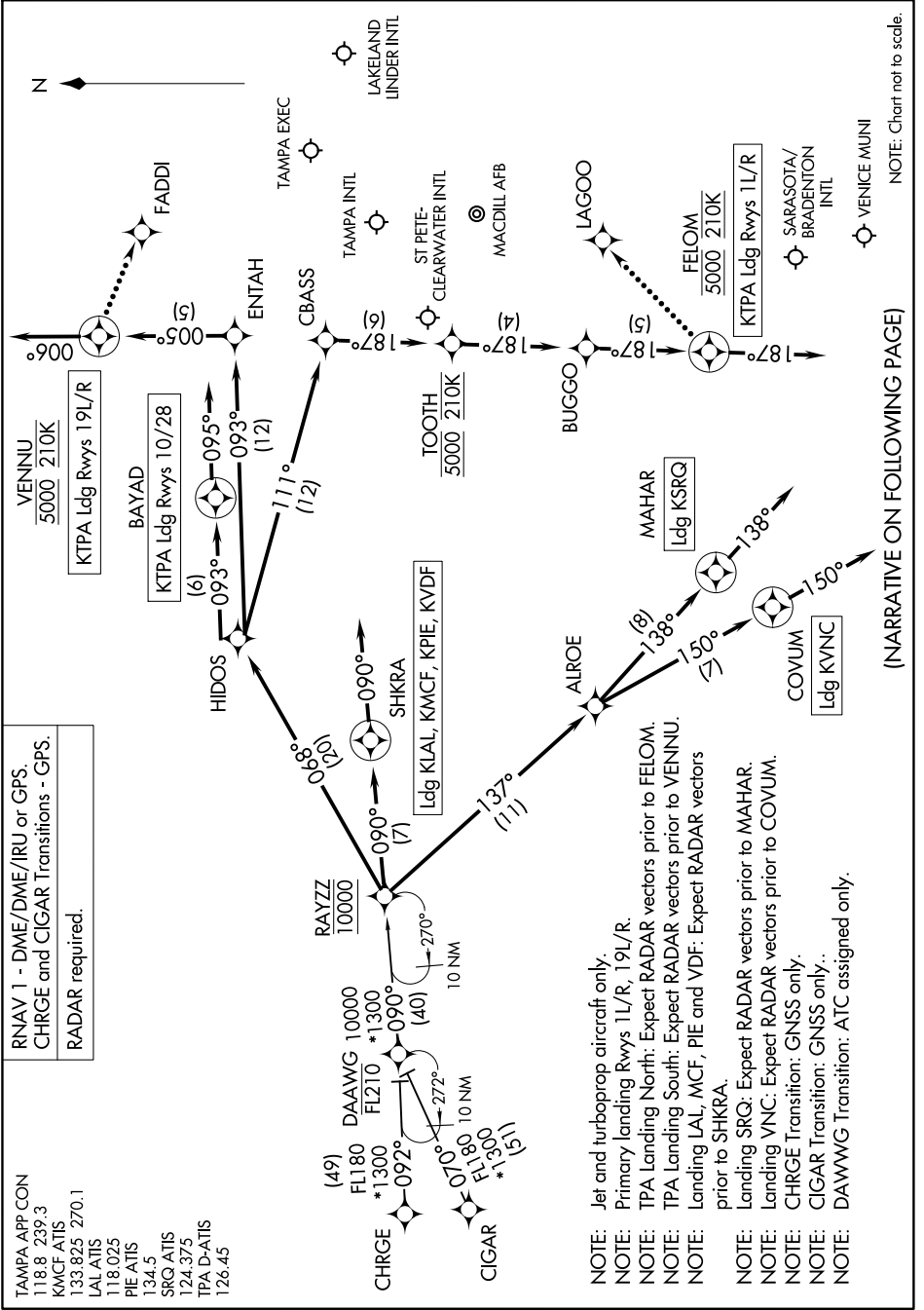


RAYZZ TWO ARRIVAL (RNAV)

TAMPA, FLORIDA

SE-3, 19 MAY 2022 to 16 JUN 2022



RNAV 1 - DME/DME/IRU or GPS.
 CHRG and CIGAR Transitions - GPS.
 RADAR required.

TAMPA APP CON
 118.8 239.3
 KMCF ATIS
 133.825 270.1
 LAL ATIS
 118.025
 PIE ATIS
 134.5
 SRQ ATIS
 124.375
 TPA D-ATIS
 126.45

(49) DAAWGW 10000
 FL180 *1300
 CHRG 092° (40)
 (51) CIGAR
 FL180 10 NM
 FL1300 *1300
 RAYZZ 10000
 270°
 10 NM

NOTE: Jet and turboprop aircraft only.
 NOTE: Primary landing Rwy 1L/R, 19L/R.
 NOTE: TPA Landing North: Expect RADAR vectors prior to FELOM.
 NOTE: TPA Landing South: Expect RADAR vectors prior to VENINU.
 NOTE: Landing LAL, MCF, PIE and VDF: Expect RADAR vectors prior to SHKRA.
 NOTE: Landing SRQ: Expect RADAR vectors prior to MAHAR.
 NOTE: Landing VNC: Expect RADAR vectors prior to COVUM.
 NOTE: CHRG Transition: GNSS only.
 NOTE: CIGAR Transition: GNSS only.
 NOTE: DAAWGW Transition: ATC assigned only.

(NARRATIVE ON FOLLOWING PAGE)

NOTE: Chart not to scale.

RAYZZ TWO ARRIVAL (RNAV)

TAMPA, FLORIDA

SE-3, 19 MAY 2022 to 16 JUN 2022