

TAMPA, FLORIDA

# ILS or LOC RWY 23

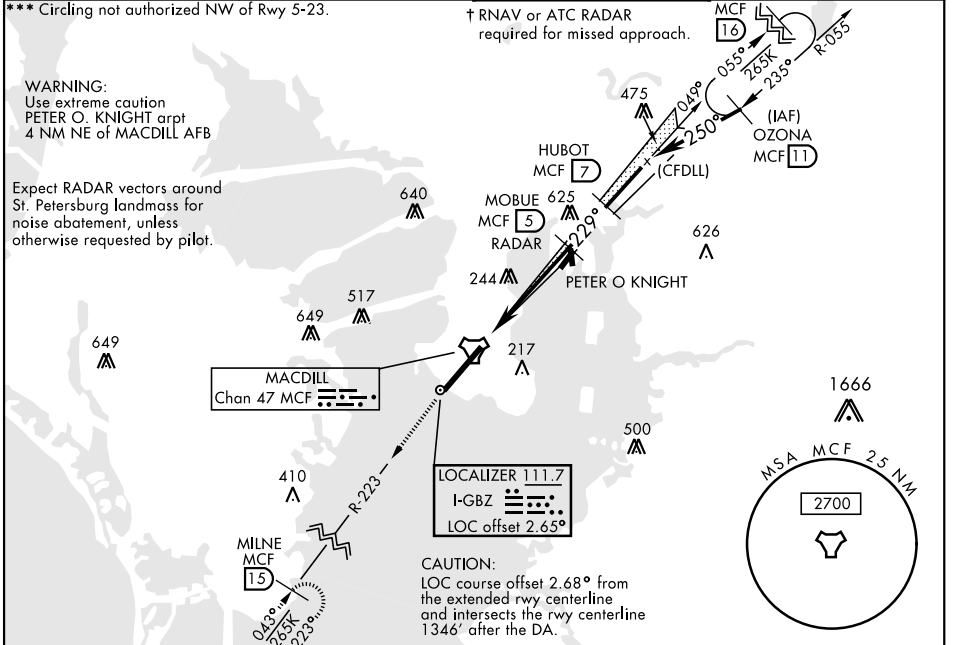
LOC I-GBZ <b>111.7</b>	APCH CRS <b>229°</b>	Rwy Idg <b>11,421</b> TDZE <b>14</b> Arpt Elev <b>14</b>
---------------------------	-------------------------	--

AL-418 [USAF]

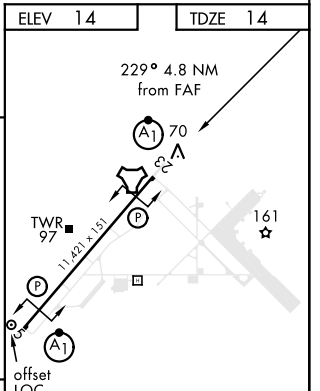
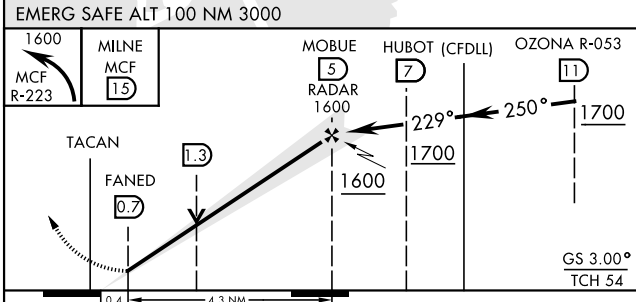
MACDILL AFB (KMCF)

RADAR or DME required.		ALSF-1 	↑ MISSED APPROACH: Climb to 1600 via MCF R-223 to MILNE and hold.
* When ALS inop, increase RVR to 40, vis to ¼ mile. ** When ALS inop, increase CAT AB RVR to 55, vis to 1 mile; CAT CDE vis to 1 ½ miles.			

ATIS <b>133.825 270.1</b>	TAMPA APP CON <b>124.95 354.0</b>	TOWER <b>120.175 294.7</b>	GND CON <b>118.575 275.8</b>
------------------------------	--------------------------------------	-------------------------------	---------------------------------



ELEV 14	TDZE 14
---------	---------



CATEGORY	A	B	C	D	E
S-ILS 23*	264/24		250	(300-½)	
S-LOC 23**	440/24	426 (500-½)	440/40	426 (500-¾)	
CIRCLING***	500-1 486 (500-1)	540-1 526 (600-1)	540-1½ 526 (600-1½)	580-2 566 (600-2)	1020-3 1006 (1100-3)

HIRL Rwy 5-23					
LOC FAF to MAP 4.3 NM					
Knots	60	90	120	150	180
Min:Sec	4:18	2:52	2:09	1:43	1:26

TAMPA, FLORIDA  
Orig 31DEC20

27°51'N-82°31'W

MACDILL AFB (KMCF)

# ILS or LOC RWY 23

SE-3, 19 MAY 2022 to 16 JUN 2022

SE-3, 19 MAY 2022 to 16 JUN 2022