

TAMPA, FLORIDA

TACAN RWY 23

TACAN MCF Chan 47	APCH CRS 240°	Rwy ldg TDZE 11,421 14	Arprt Elev 14
----------------------	------------------	------------------------------	------------------

AL-418 (USAF)

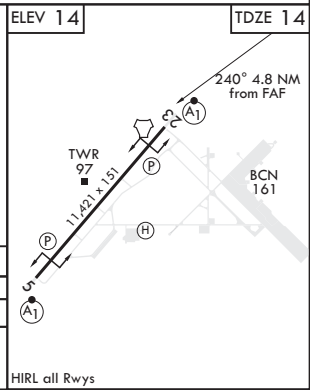
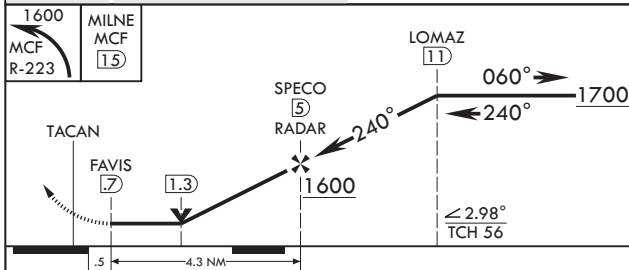
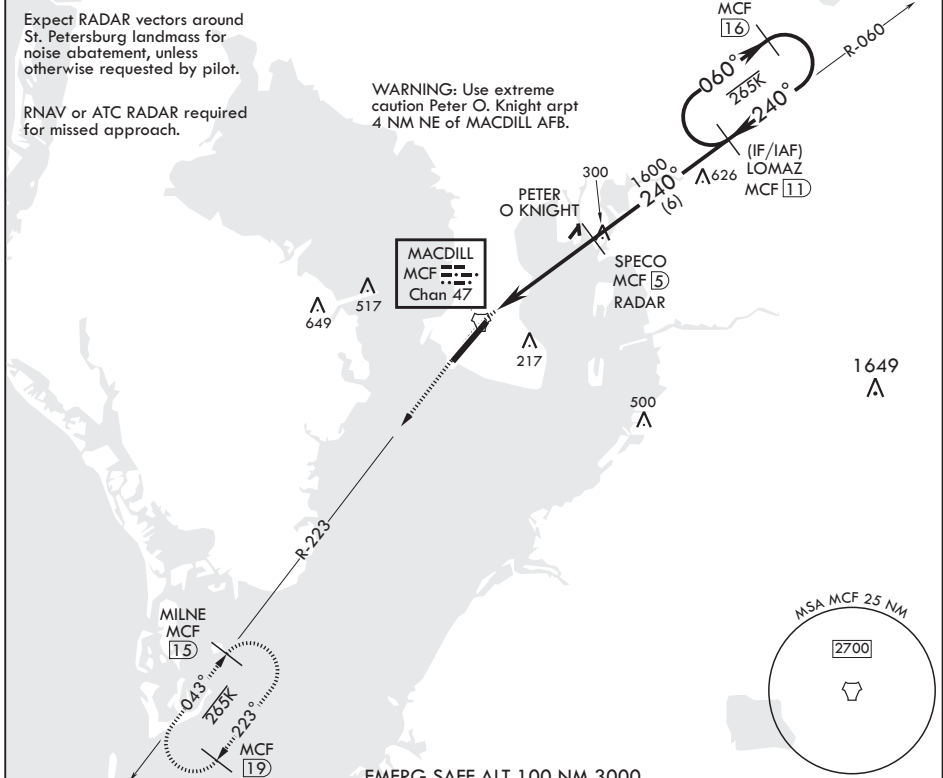
MACDILL AFB (KMCF)

* When ALS inop, increase CAT AB RVR to 55, vis to 1 mile; CAT CDE vis to 1 1/4 miles.
 ** Circling not authorized NW of Rwy 5-23.



MISSED APPROACH: Climb to 1600 via MCF TACAN R-223 to MILNE and hold.

ATIS 133.825 270.1	TAMPA APP CON 124.95 354.0	TOWER 120.175 294.7	GND CON 118.575 275.8
-----------------------	-------------------------------	------------------------	--------------------------



CATEGORY	A	B	C	D	E
S-23*	440/24 426 (500-½)		440/40 426		(500-¾)
CIRCLING**	520-1 486 (600-1)	540-1 526 (600-1)	540-1½ 526 (600-½)	580-2 566 (600-2)	1020-3 1006 (1100-3)

TAMPA, FLORIDA
 Orig 31DEC20

27°51'N - 82°31'W

MACDILL AFB (KMCF)

TACAN RWY 23

SE-3, 19 MAY 2022 to 16 JUN 2022

SE-3, 19 MAY 2022 to 16 JUN 2022