

WAAS CH 65925 W18A	APP CRS 179°	Rwy Idg TDZE Apt Elev	5001 275 279
--	------------------------	-----------------------------	---

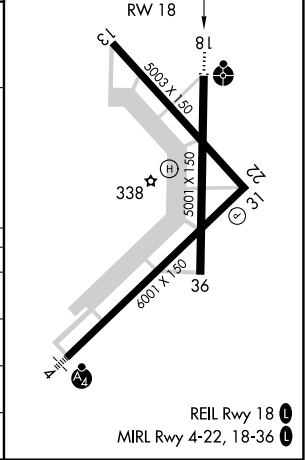
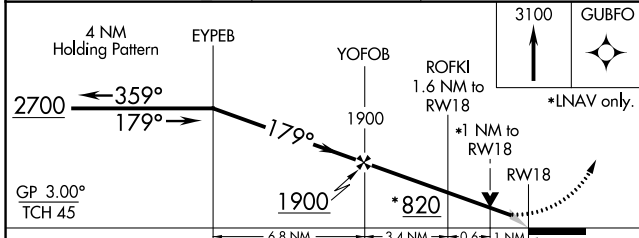
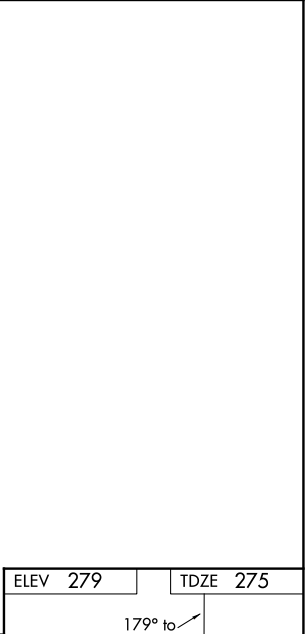
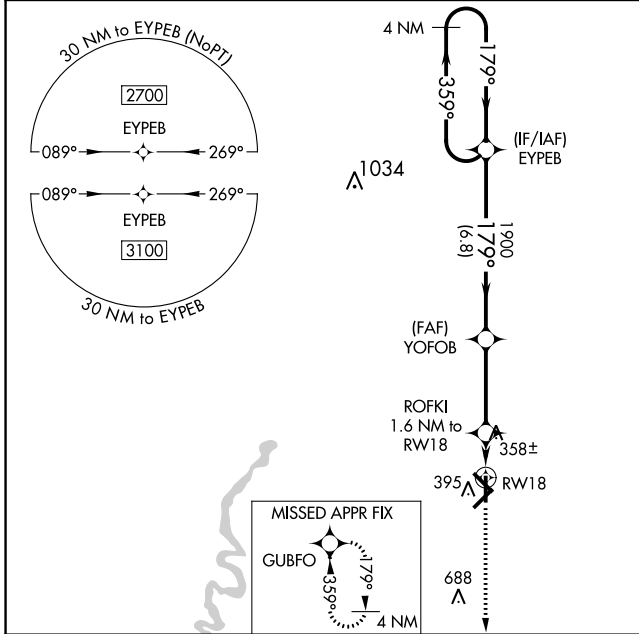
RNAV (GPS) RWY 18

WALNUT RIDGE RGNL (A.R.G)

⚠ For uncompensated Baro-VNAV systems, LNAV/VNAV NA below -15°C (5°F) or above 42°C (107°F). DME/DME RNP-0.3 NA. When local altimeter setting not received, use Jonesboro altimeter setting and increase LPV DA to 529 feet, LNAV/VNAV DA to 579 feet, and all MDAs 60 feet; increase Circling Cat D visibility ¼ SM. When using Jonesboro altimeter setting; for inoperative ODALS, increase LPV all Cats visibility to ¾ mile, LNAV/VNAV all Cats visibility to 1 mile and LNAV Cat C and D visibility to 1 mile and LNAV Cat and D visibility to 1½ mile. Baro-VNAV and VDP NA with Jonesboro altimeter setting.

ODALS MISSED APPROACH: Climb to 3100 direct GUBFO and hold.

AWOS-3PT 126.525	MEMPHIS CENTER 120.075 289.4	UNICOM 122.8 (CTAF)
----------------------------	--	-------------------------------



CATEGORY	A	B	C	D
LPV DA		475-¾	200 (200-¾)	
LNAV/VNAV DA		525-¾	250 (300-¾)	
LNAV MDA	620-¾	345 (400-¾)	620-⅞	345 (400-⅞)
CIRCLING	760-1	481 (500-1)	800-1½ 521 (600-1½)	1000-2¼ 721 (800-2¼)

SC-1, 19 MAY 2022 to 16 JUN 2022

SC-1, 19 MAY 2022 to 16 JUN 2022